

TOWNSHIP OF HAMPTON

ORDINANCE NO. 848

AN ORDINANCE OF THE TOWNSHIP OF HAMPTON, ALLEGHENY COUNTY, PENNSYLVANIA, APPROVING AND ACCEPTING FOR DEDICATION AS A PUBLIC STREET OF THE TOWNSHIP THAT CERTAIN STREET, TOGETHER WITH THE STORM AND SANITARY SEWER IMPROVEMENTS WITHIN ITS RECORDED RIGHT-OF-WAY, AS BUILT IN THE HAMPTONS [PRD] PLAN OF LOTS, TO WIT: HAMPTON PLACE DRIVE

WHEREAS, Developer, the Hamptons, LP ("Developer"), has obtained approval for, has recorded, and has now completed a land development plan of lots in the Township, more particularly described as the "**THE HAMPTONS [PRD] PLAN OF LOTS**", as recorded in the Allegheny County Recorder of Deeds Office at Plan Book Vol. 288, Page 194 (the "Plan");

WHEREAS, Developer has, in laying out and developing the Plan, constructed the following street, as identified on the recorded Plan, known as **Hampton Place Drive**, as also depicted and described in **Exhibit "A" & Exhibit "B"** hereof;

WHEREAS, Developer has constructed **Hampton Place Drive** in compliance with the approval granted and with applicable Township ordinances, construction standards, specifications, regulations, and agreements with the Township;

WHEREAS, Developer has requested that the Township accept **Hampton Place Drive** as a public street of the Township; and

WHEREAS, the Township Manager, Township Engineer(s), and Solicitor, have recommended approval of said roadway, together with the storm sewers and sanitary sewers within the recorded **Hampton Place Drive** right-of-way, and have thus recommended acceptance for dedication to the Township as a public road.

NOW, THEREFORE, be it ordained and enacted by the Hampton Township Council, as follows:

ARTICLE I: That the Township does hereby approve and accept for dedication Hampton Place Drive as a public street of the Township, as laid out and constructed in the recorded **The Hamptons [PRD] Plan Of Lots**, along with those public sanitary sewer and storm sewer improvements located within said street right-of-way only, said street being as described in the legal description attached hereto as **Exhibit A**, and said street and sewers being as depicted in the 'As-Built' Street, Sanitary Sewer, and Storm Sewer Plans attached hereto as **Exhibit B**.

ARTICLE II: That this Ordinance shall take effect immediately or as otherwise provided under law.

Ordained and Enacted into law this 23 day of FEBRUARY, 2022.

ATTEST:



Township Manager

TOWNSHIP OF HAMPTON



President of Council

EXHIBIT "A"

Legal Description of

HAMPTON PLACE DRIVE

in

The Hamptons PRD Plan of Lots Allegheny County, PA

(PBV 288, Page 194)

All that certain parcel of ground situate in the Township of Hampton, County of Allegheny, and Commonwealth of Pennsylvania, being Hampton Place Drive, a fifty (50) foot public right of way in The Hamptons plan, as recorded in the Department of Real Estate of Allegheny County in **Plan Book Volume 288 Page 194**, being more fully described herewith:

Beginning at a point on the southerly right of way line of West Hardies Road, State Route 4067, a thirty-three (33) foot public right of way, where the same is intersected by the dividing line of Open Space Parcel I in said Plan and lands now or formerly of Jordan and Linda Platt; thence along said right of way line North 86 degrees 36 minutes 14 seconds East for a distance of 65.74 feet to a point at the intersection of the southerly right of way line of West Hardies Road and the westerly right of way line of Hampton Place Drive, the true place of beginning; thence continuing with the southerly right of way line of West Hardies Road North 86 degrees 36 minutes 14 seconds East for a distance of 130.00 feet to a point at the intersection of the southerly right of way line of West Hardies Road and the easterly right of way line of Hampton Place Drive; thence continuing with the easterly right of way line of Hampton Place Drive by a line through the lands of The Hamptons LP for the following fourteen (14) courses and distances: First, by the arc of a circle curving to the left, having a radius of 25.00 feet for an arc distance of 39.32 feet (Chord bearing and distance South 41 degrees 32 minutes 40 seconds West, 35.39 feet); Second, South 03 degrees 30 minutes 55 seconds East for a distance of 135.78 feet; Third, by the arc of a circle curving to the left, having a radius of 303.75 feet for an arc distance of 96.79 feet (Chord bearing and distance South 11 degrees 25 minutes 40 seconds East, 96.38 feet); Fourth, South 19 degrees 18 minutes 37 seconds East for a distance of 76.20 feet; Fifth, by the arc of a circle curving to the right, having a radius of 225.00 feet for an arc distance of 135.25 feet (Chord bearing and distance South 02 degrees 05 minutes 24 seconds East, 133.22 feet); Sixth, South 15 degrees 08 minutes 44 seconds West for a distance of 169.03 feet; Seventh, by the arc of a circle curving to the left, having a radius of 275.00 feet for an arc distance of 200.23 feet (Chord bearing and distance South 05 degrees 42 minutes 46 seconds East, 195.83 feet); Eighth, South 26 degrees 34 minutes 17 seconds East for a distance of 141.14 feet; Ninth, by the arc of a circle curving to the right, having a radius of 390.00 feet for an arc distance of 542.83 feet (Chord bearing and distance South 13 degrees 18 minutes 09 seconds West, 500.06 feet); Tenth, South 53 degrees 10 minutes 36 seconds West for a distance of 107.48 feet; Eleventh, by the arc of a circle curving to the left, having a radius of 265.00 feet for an arc distance of 235.95 feet (Chord bearing and distance South 27 degrees 40 minutes 11 seconds West, 228.23 feet); Twelfth, South 02 degrees 09 minutes 45 seconds West for a distance of 100.81 feet;

Twelfth, by the arc of a circle curving to the left, having a radius of 175.00 feet for an arc distance of 139.67 feet (Chord bearing and distance South 20 degrees 42 minutes 03 seconds East, 135.99 feet); Thirteenth, by the arc of a circle curving to the left, having a radius of 275.00 feet for an arc distance of 212.41 feet (Chord bearing and distance South 65 degrees 41 minutes 31 seconds East, 207.17 feet); Fourteenth, by the arc of a circle curving to the left, having a radius of 25.00 feet for an arc distance of 23.70 feet (Chord bearing and distance North 65 degrees 01 minutes 23 seconds East, 22.82 feet) to a point on the southeasterly terminus of Hampton Place Drive; thence continuing with the southeasterly terminus of Hampton Place Drive by the arc of a circle curving to the right, having a radius of 50.00 feet for an arc distance of 240.79 feet (Chord bearing and distance South 04 degrees 10 minutes 14 seconds East, 66.96 feet) to a point on the westerly right of way line of Hampton Place Drive; thence continuing with the westerly right of way line of Hampton Place Drive for the following fifteen (15) courses and distances: First, by the arc of a circle curving to the left, having a radius of 25.00 feet for an arc distance of 18.95 feet (Chord bearing and distance North 67 degrees 55 minutes 22 seconds West, 18.50 feet); Second, by the arc of a circle curving to the right, having a radius of 325.00 feet for an arc distance of 261.35 feet (Chord bearing and distance North 66 degrees 36 minutes 06 seconds West, 254.36 feet); Third, by the arc of a circle curving to the right, having a radius of 225.00 feet for an arc distance of 179.57 feet (Chord bearing and distance North 20 degrees 42 minutes 03 seconds West, 174.84 feet); Fourth, North 02 degrees 09 minutes 45 seconds East for a distance of 100.81 feet; Fifth, by the arc of a circle curving to the right, having a radius of 315.00 feet for an arc distance of 280.46 feet (Chord bearing and distance North 27 degrees 40 minutes 11 seconds East, 271.29 feet); Sixth, North 53 degrees 10 minutes 36 seconds East for a distance of 107.48 feet; Seventh, by the arc of a circle curving to the left, having a radius of 340.00 feet for an arc distance of 473.24 feet (Chord bearing and distance North 13 degrees 18 minutes 09 seconds East, 435.95 feet); Eighth, North 26 degrees 34 minutes 17 seconds West for a distance of 141.14 feet; Ninth, by the arc of a circle curving to the right, having a radius of 325.00 feet for an arc distance of 236.63 feet (Chord bearing and distance North 05 degrees 42 minutes 46 seconds West, 231.44 feet); Tenth, North 15 degrees 08 minutes 44 seconds East for a distance of 169.03 feet; Eleventh, by the arc of a circle curving to the left, having a radius of 175.00 feet for an arc distance of 114.25 feet (Chord bearing and distance North 03 degrees 36 minutes 11 seconds West, 112.23 feet); Twelfth, North 22 degrees 18 minutes 20 seconds West for a distance of 144.60 feet; Thirteenth, by the arc of a circle curving to the right, having a radius of 311.00 feet for an arc distance of 101.99 feet (Chord bearing and distance North 12 degrees 54 minutes 37 seconds West, 101.54 feet); Fourteenth, North 03 degrees 30 minutes 55 seconds West for a distance of 72.71 feet; Fifteenth, by the arc of a circle curving to the left, having a radius of 25.00 feet for an arc distance of 39.22 feet (Chord bearing and distance North 48 degrees 27 minutes 20 seconds West, 35.32 feet) to a point on the southerly right of way line of West Hardies Road, State Route 4067, the true place of beginning.

Parcel as herein described having an area of 130,521 square feet or 2.9964 acres.

Excepting and reserving therefrom Open Space Parcel III and Open Space Parcel IV in The Hamptons plan, as recorded in the Department of Real Estate of Allegheny County in Plan Book Volume 288 Page 194.

EXHIBIT "B"

AS-BUILT PLANS

for

HAMPTON PLACE DRIVE*

in

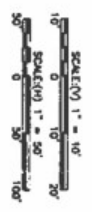
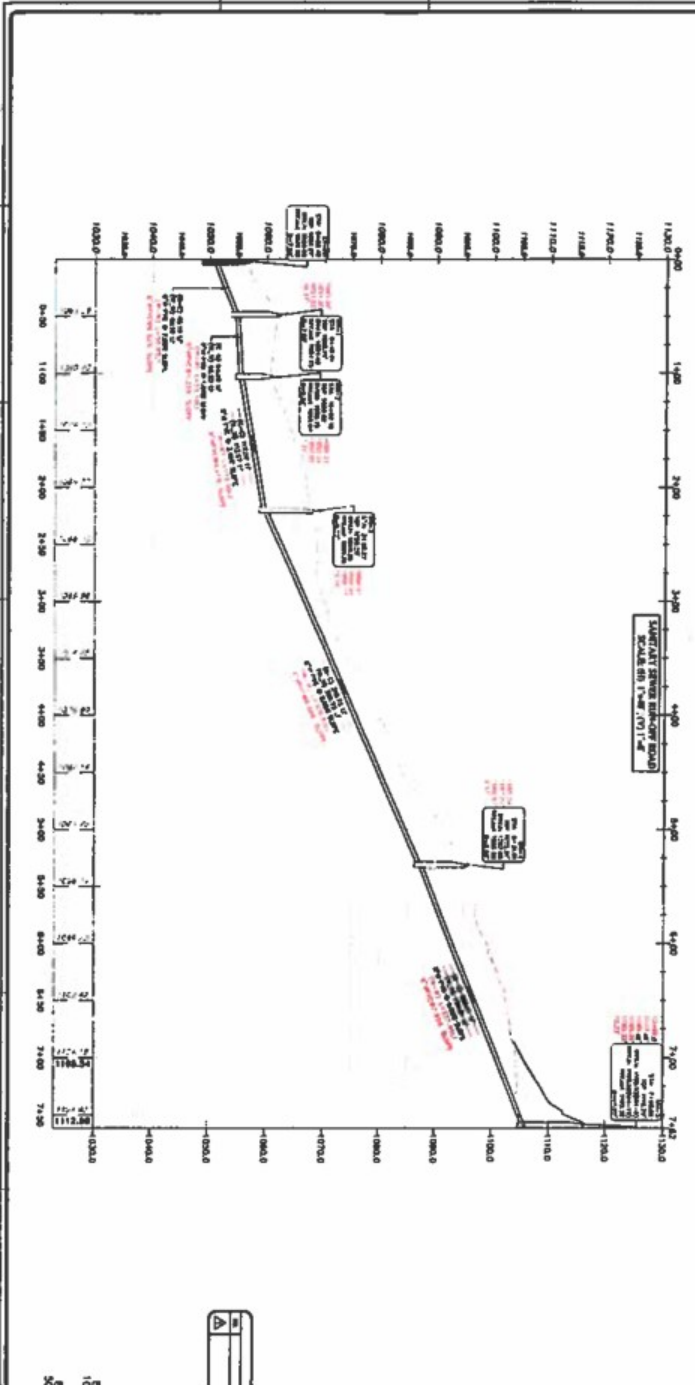
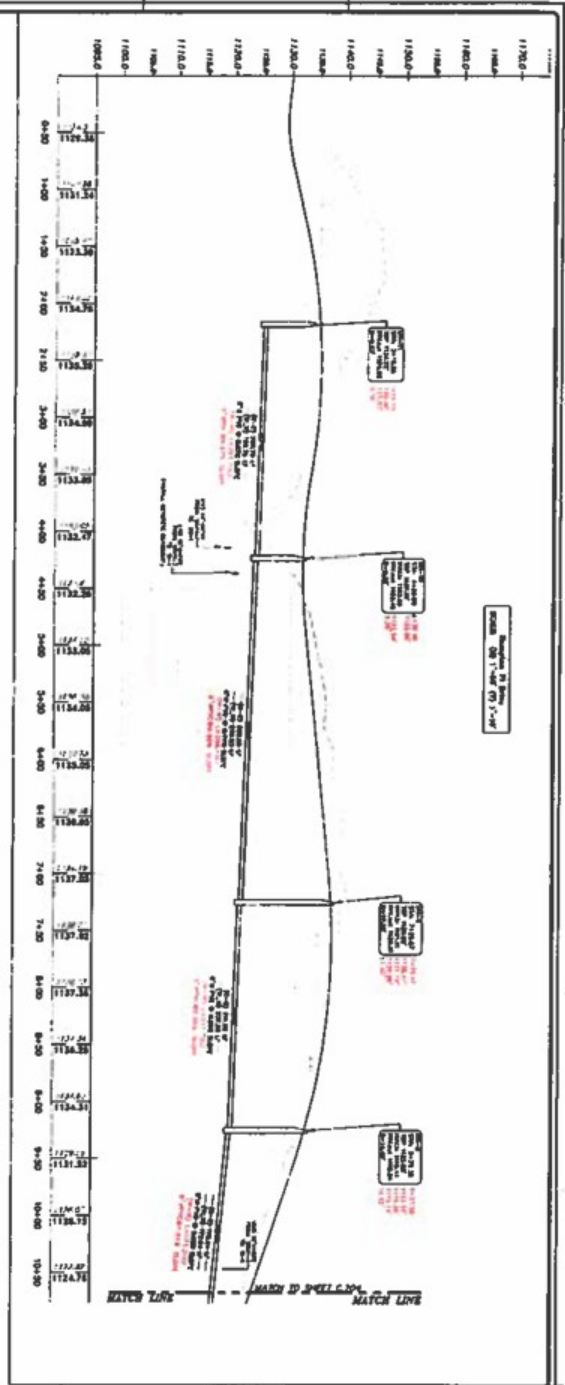
**The Hamptons PRD Plan of Lots
Allegheny County, PA**

(PBV 288, Page 194)

*** including the As-Built Plans for public Street, Sanitary Sewers, and Storm Sewers offered to and accepted by the Township of Hampton.**

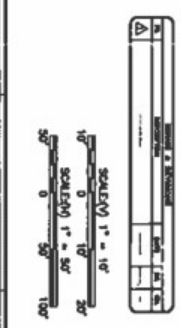
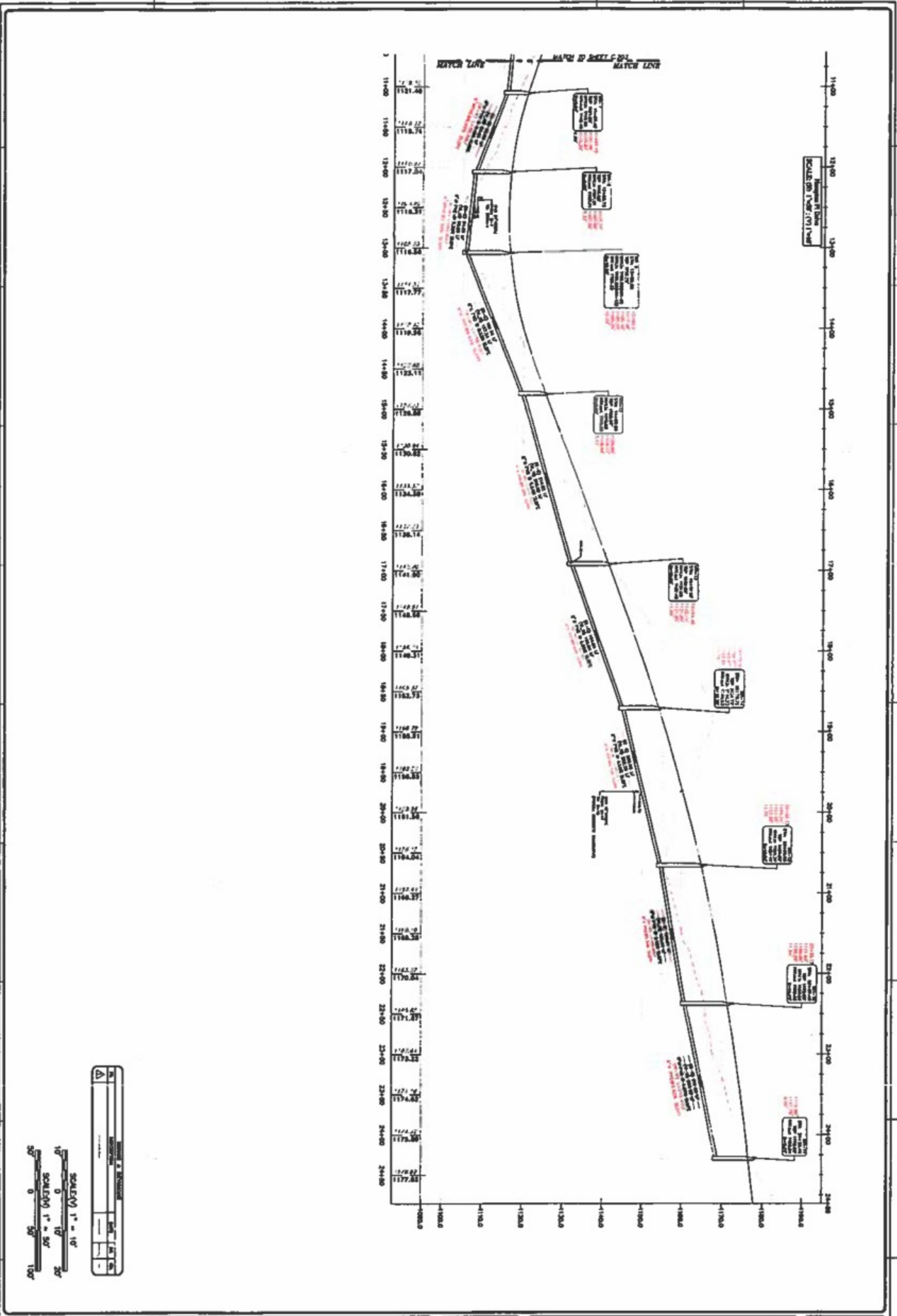
NOTICE/DISCLAIMER:

For informational purposes only, this Exhibit B also includes the As-Built Stormwater Basin Plan and the As-Built Water Line Plan for the Hampton PRD Plan. Be advised that the Developer has not offered, and the Township does not accept hereby, either the Water Lines (to be assumed by the Hampton Shaler Water Authority), or the private Stormwater Basin (to remain under the private ownership of the Developer and successor Homeowner's Association established for The Hamptons PRD Plan).



NO.	DATE	DESCRIPTION

<p>PROJECT NO. 17-11086-1</p> <p>C-203</p> <p>DATE 7/17/10</p>	<p>THE HAMPTONS</p> <p>SITE SANITARY SEWER PROFILE</p> <p>TOWNSHIP OF HAMPTON, ALLEGHENY COUNTY, PENNSYLVANIA</p> <p>THE HAMPTONS, LP.</p> <p>275 GOLFIDE DRIVE, ALLEGHENY CO, PA.</p>	<p>DATE 07/17/10</p> <p>BY [Signature]</p> <p>CHECKED [Signature]</p> <p>SCALE 1"=10'</p>	<p>HAMPTON</p> <p>TECHNICAL ASSOCIATES, INC.</p> <p>ENGINEERING AND SURVEYING</p> <p>ESTABLISHED 1980</p> <p>www.Hampton-Technical.com</p> <p>one@hampton-technical.com</p>	<p>Complete Office</p> <p>1000 North Park Drive</p> <p>Philadelphia, PA 19104</p> <p>Phone (215) 381-3333</p> <p>Fax (215) 381-3334</p>	
---	---	---	--	---	--



DATE	10-1-2017
PROJECT	THE HAMPTONS
CLIENT	THE HAMPTONS, LP.
SCALE	1" = 10'
PROJECT NO.	17-11086-1

THE HAMPTONS
SITE SANITARY SEWER PROFILE
 TOWNSHIP OF HAMPTON, ALLEGHENY COUNTY, PENNSYLVANIA

CLIENT: THE HAMPTONS, LP.
 275 GOLDFINE DRIVE, ALLEGHENY CO. PA.

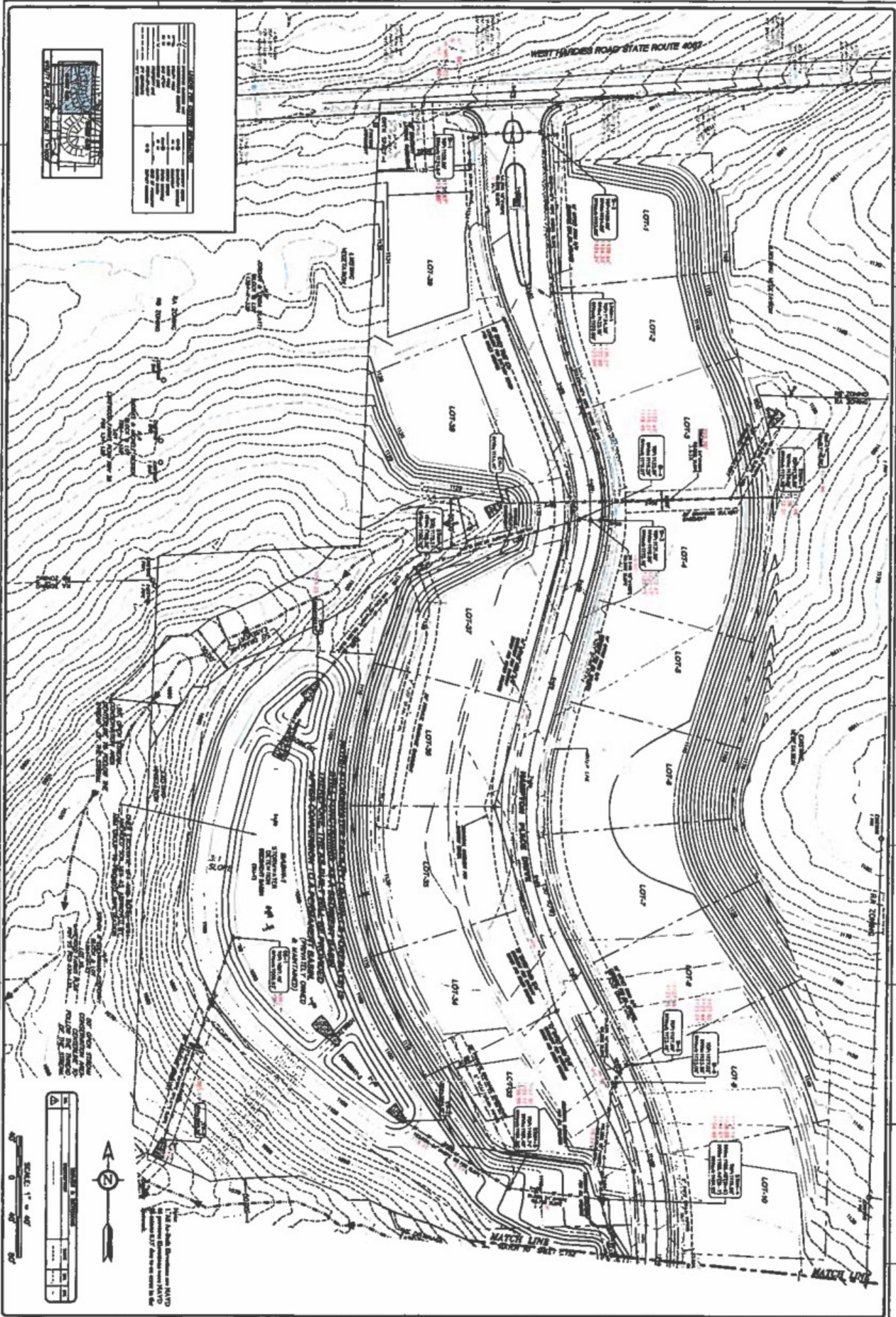
DATE: 10-1-2017
 PROJECT: THE HAMPTONS
 CLIENT: THE HAMPTONS, LP.
 SCALE: 1" = 10'

HAMPTON
 TECHNICAL ASSOCIATES, INC.
 SURVEYING AND LAND SURVEYORS
 ESTABLISHED 1986

www.Hampton-Technical.com
 email@hampton-technical.com

Professional Engineer
 2000 North Park Drive, Suite 200
 Pittsburgh, PA 15207
 Phone: (412) 781-1000
 Fax: (412) 781-1001





SCALE: 1" = 40'
 NORTH ARROW
 LEGEND
 1" = 40'
 0 20 40 60 80 100 120 140 160 180 200
 17-1088-1

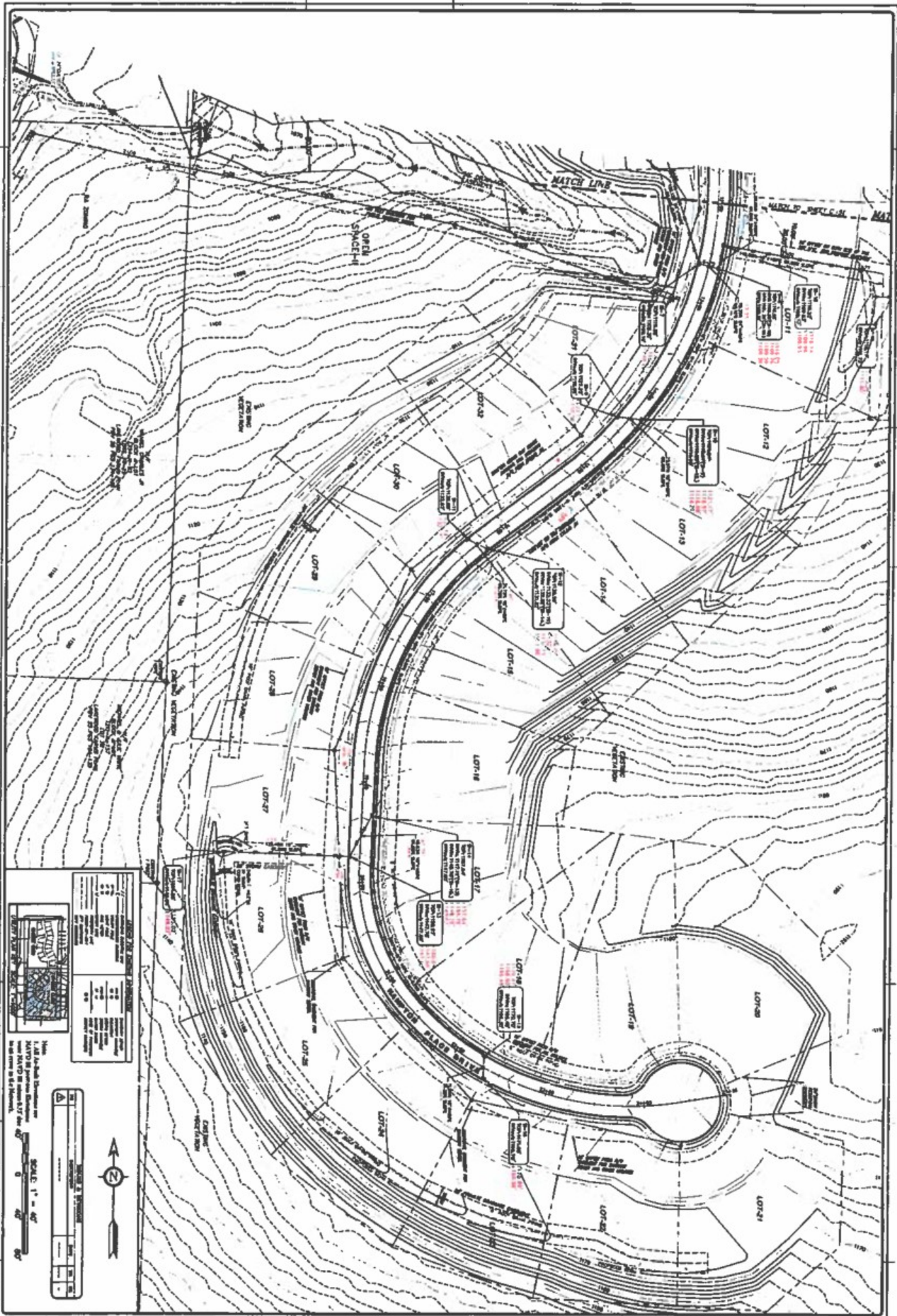
THE HAMPTONS
SITE STORM SEWER AS-BUILT PLAN
 TOWNSHIP OF HAMPTON, ALLEGHENY COUNTY, PENNSYLVANIA
 THE HAMPTONS, LP.
 376 GOLFEDGE DRIVE, ALLEGHENY CO., PA.

HAMPTON
 TECHNICAL ASSOCIATES, INC.
 ENGINEERING AND SURVEYING
 ESTABLISHED 1969
 www.HamptonTechnical.com
 email@hampton-tech.com



HAMPTON
 TECHNICAL ASSOCIATES, INC.
 ENGINEERING AND SURVEYING
 ESTABLISHED 1969
 www.HamptonTechnical.com
 email@hampton-tech.com





NOTES

1. All lot dimensions are to be verified by the owner.
2. All lot dimensions are to be verified by the owner.
3. All lot dimensions are to be verified by the owner.
4. All lot dimensions are to be verified by the owner.
5. All lot dimensions are to be verified by the owner.
6. All lot dimensions are to be verified by the owner.
7. All lot dimensions are to be verified by the owner.
8. All lot dimensions are to be verified by the owner.
9. All lot dimensions are to be verified by the owner.
10. All lot dimensions are to be verified by the owner.
11. All lot dimensions are to be verified by the owner.
12. All lot dimensions are to be verified by the owner.
13. All lot dimensions are to be verified by the owner.
14. All lot dimensions are to be verified by the owner.
15. All lot dimensions are to be verified by the owner.
16. All lot dimensions are to be verified by the owner.
17. All lot dimensions are to be verified by the owner.

SCALE: 1" = 40'

LEGEND

Symbol	Description
(Symbol)	Storm Sewer
(Symbol)	Manhole
(Symbol)	Proposed
(Symbol)	Existing
(Symbol)	Topographic Contour
(Symbol)	Property Line
(Symbol)	Match Line

C-182

17-11000-1

THE HAMPTONS
SITE STORM SEWER AS-BUILT PLAN
 TOWNSHIP OF HAMPTON, ALLEGHENY COUNTY, PENNSYLVANIA

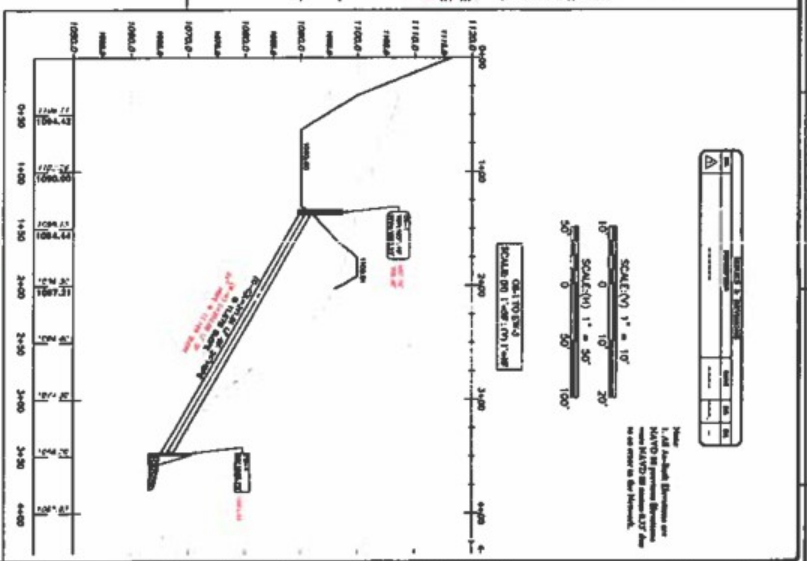
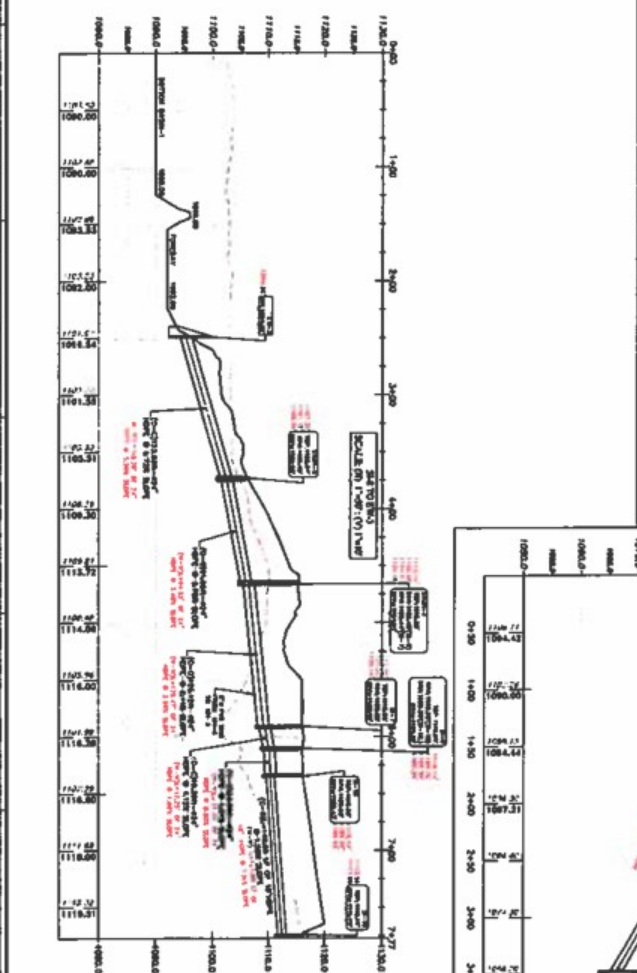
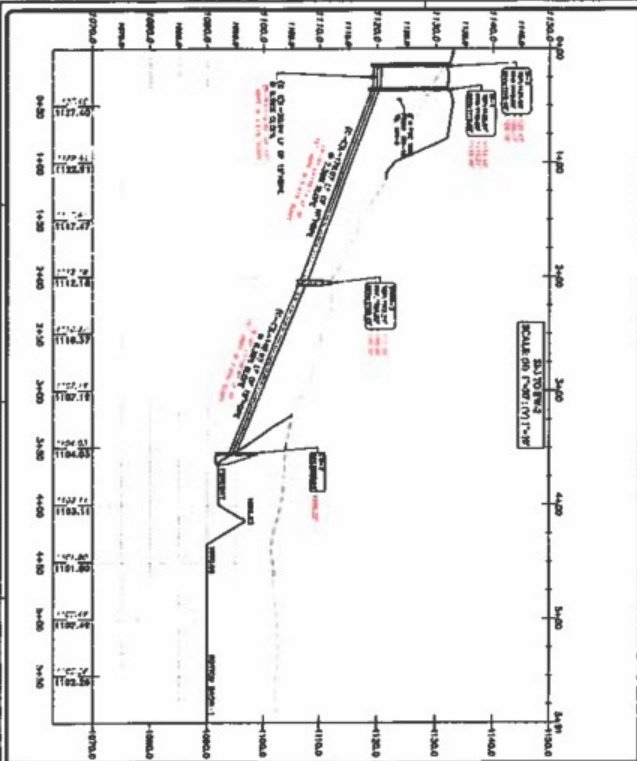
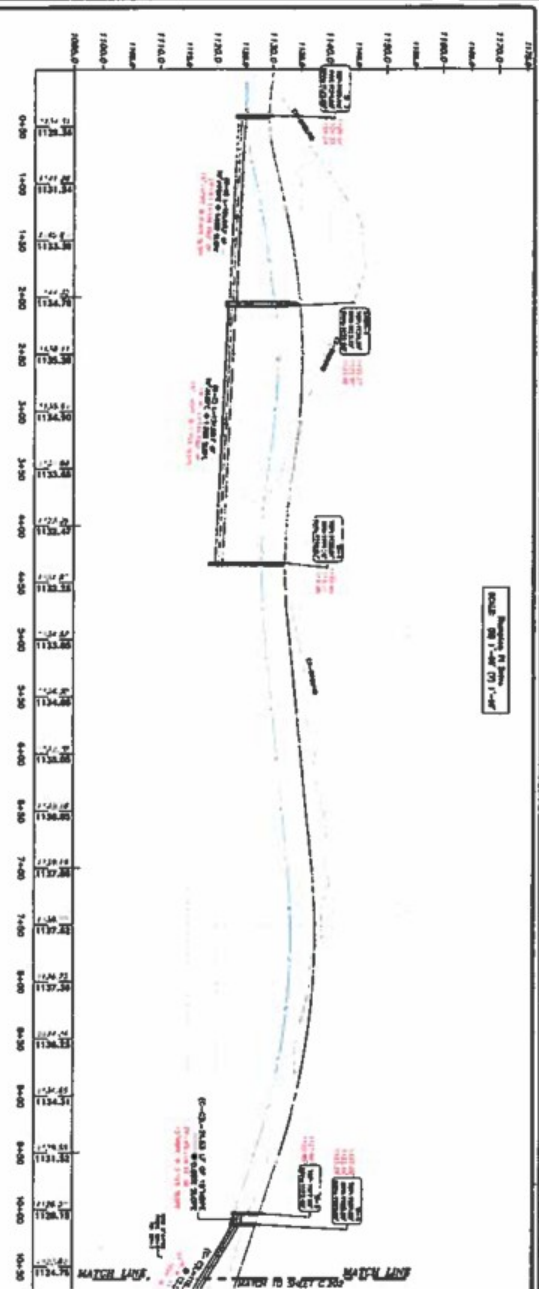
THE HAMPTONS, LP
 275 GOLFERS DRIVE, ALLEGHENY CO, PA.

DATE 10/1/00
SCALE 1" = 40'
PROJECT 17-11000-1

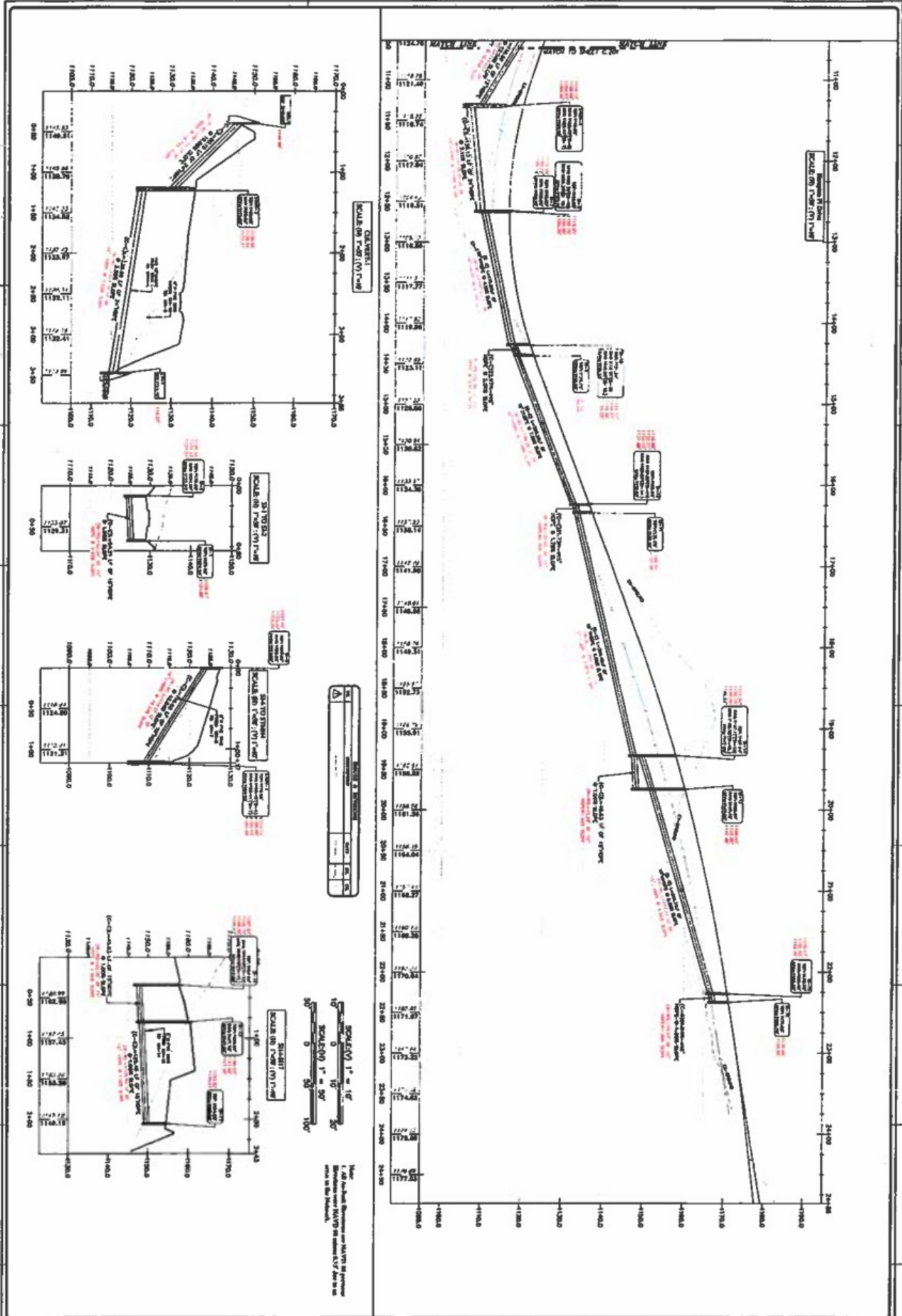
HAMPTON
 TECHNICAL ASSOCIATES, INC.
 ENGINEERING AND SURVEYING
 ESTABLISHED 1986
 www.Hampton-Technical.com
 email@hampton-technical.com

REGISTERED PROFESSIONAL ENGINEER
 STATE OF PENNSYLVANIA
 No. 10000
 EXPIRES 12/31/01





	THE HAMPTONS SITE STORM SEWER AS-BUILT (PROFILES) TOWNSHIP OF HAMPTON, ALLEGHENY COUNTY, PENNSYLVANIA		HAMPTON TECHNICAL ASSOCIATES, INC. ENGINEERING AND SURVEYING ESTABLISHED 1988 www.Hampton-Technical.com email:hampton@hampton-technical.com
	THE HAMPTONS, LP 375 COLPINE DRIVE, ALLEGHENY CO, PA		Project No. 17-1098-1 Date: 11/11/11 Scale: 1" = 10' Drawing No. 17-1098-1-001



	HAMPTON TECHNICAL ASSOCIATES, INC. ENGINEERING AND SURVEYING ESTABLISHED 1998 www.Hampton-Technical.com email:hampton@hampton-tech.com	
	1000 N. 10th St., Suite 200 Harrisburg, PA 17104-2000 Tel: (717) 653-8800 Fax: (717) 653-8801	

THE HAMPTONS
 SITE STORM SEWER AS-BUILT (PROFILES)
 TOWNSHIP OF HAMPTON, ALLEGANY COUNTY, PENNSYLVANIA
 THE HAMPTONS, LP.
 375 GOLDSIDE DRIVE, ALLEGANY CO, PA.

DATE: 11/11/2011
 DRAWN BY: J.C.K.
 CHECKED BY: J.C.K.
 APPROVED BY: J.C.K.
 CADD FILE: 17-11088-1.dwg

SHEET NO. 1
 TOTAL SHEETS 1

SCALE: 1" = 10'
 SCALE: 1" = 50'
 SCALE: 1" = 100'

Note: 1. All As-Built Drawings are ALWAYS of previous editions unless MAJOR REVISIONS ARE MADE to the drawings.

C-202
 17-11088-1

EXPLANATION OF SYMBOLS AND NOTATION

1. All dimensions are in feet unless otherwise noted.
2. All elevations are in feet above sea level unless otherwise noted.
3. All materials are to be installed in accordance with the specifications of the Pennsylvania Department of Transportation (PA DOT) and the American Society of Civil Engineers (ASCE).
4. All structures are to be constructed in accordance with the specifications of the Pennsylvania Department of Transportation (PA DOT) and the American Society of Civil Engineers (ASCE).
5. All structures are to be constructed in accordance with the specifications of the Pennsylvania Department of Transportation (PA DOT) and the American Society of Civil Engineers (ASCE).
6. All structures are to be constructed in accordance with the specifications of the Pennsylvania Department of Transportation (PA DOT) and the American Society of Civil Engineers (ASCE).
7. All structures are to be constructed in accordance with the specifications of the Pennsylvania Department of Transportation (PA DOT) and the American Society of Civil Engineers (ASCE).
8. All structures are to be constructed in accordance with the specifications of the Pennsylvania Department of Transportation (PA DOT) and the American Society of Civil Engineers (ASCE).
9. All structures are to be constructed in accordance with the specifications of the Pennsylvania Department of Transportation (PA DOT) and the American Society of Civil Engineers (ASCE).
10. All structures are to be constructed in accordance with the specifications of the Pennsylvania Department of Transportation (PA DOT) and the American Society of Civil Engineers (ASCE).

GENERAL NOTES

1. The stormwater basin is to be constructed in accordance with the specifications of the Pennsylvania Department of Transportation (PA DOT) and the American Society of Civil Engineers (ASCE).
2. The stormwater basin is to be constructed in accordance with the specifications of the Pennsylvania Department of Transportation (PA DOT) and the American Society of Civil Engineers (ASCE).
3. The stormwater basin is to be constructed in accordance with the specifications of the Pennsylvania Department of Transportation (PA DOT) and the American Society of Civil Engineers (ASCE).
4. The stormwater basin is to be constructed in accordance with the specifications of the Pennsylvania Department of Transportation (PA DOT) and the American Society of Civil Engineers (ASCE).
5. The stormwater basin is to be constructed in accordance with the specifications of the Pennsylvania Department of Transportation (PA DOT) and the American Society of Civil Engineers (ASCE).
6. The stormwater basin is to be constructed in accordance with the specifications of the Pennsylvania Department of Transportation (PA DOT) and the American Society of Civil Engineers (ASCE).
7. The stormwater basin is to be constructed in accordance with the specifications of the Pennsylvania Department of Transportation (PA DOT) and the American Society of Civil Engineers (ASCE).
8. The stormwater basin is to be constructed in accordance with the specifications of the Pennsylvania Department of Transportation (PA DOT) and the American Society of Civil Engineers (ASCE).
9. The stormwater basin is to be constructed in accordance with the specifications of the Pennsylvania Department of Transportation (PA DOT) and the American Society of Civil Engineers (ASCE).
10. The stormwater basin is to be constructed in accordance with the specifications of the Pennsylvania Department of Transportation (PA DOT) and the American Society of Civil Engineers (ASCE).

DETAILS

Typical Basin Section Detail

Emergency Sump Section Detail

Graphic Scale

1 inch = 20 feet



Typical Basin Section Detail

1. The stormwater basin is to be constructed in accordance with the specifications of the Pennsylvania Department of Transportation (PA DOT) and the American Society of Civil Engineers (ASCE).

2. The stormwater basin is to be constructed in accordance with the specifications of the Pennsylvania Department of Transportation (PA DOT) and the American Society of Civil Engineers (ASCE).

3. The stormwater basin is to be constructed in accordance with the specifications of the Pennsylvania Department of Transportation (PA DOT) and the American Society of Civil Engineers (ASCE).

4. The stormwater basin is to be constructed in accordance with the specifications of the Pennsylvania Department of Transportation (PA DOT) and the American Society of Civil Engineers (ASCE).

5. The stormwater basin is to be constructed in accordance with the specifications of the Pennsylvania Department of Transportation (PA DOT) and the American Society of Civil Engineers (ASCE).

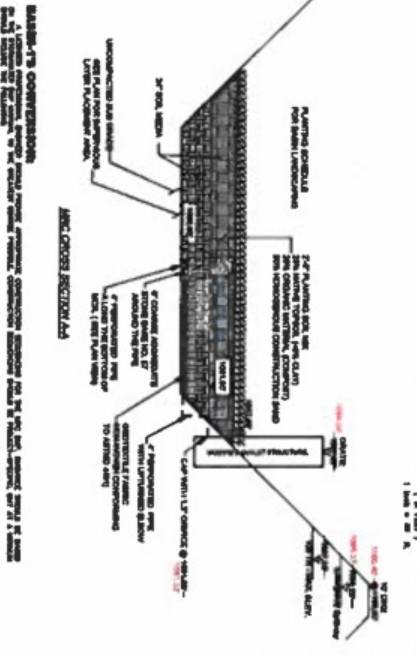
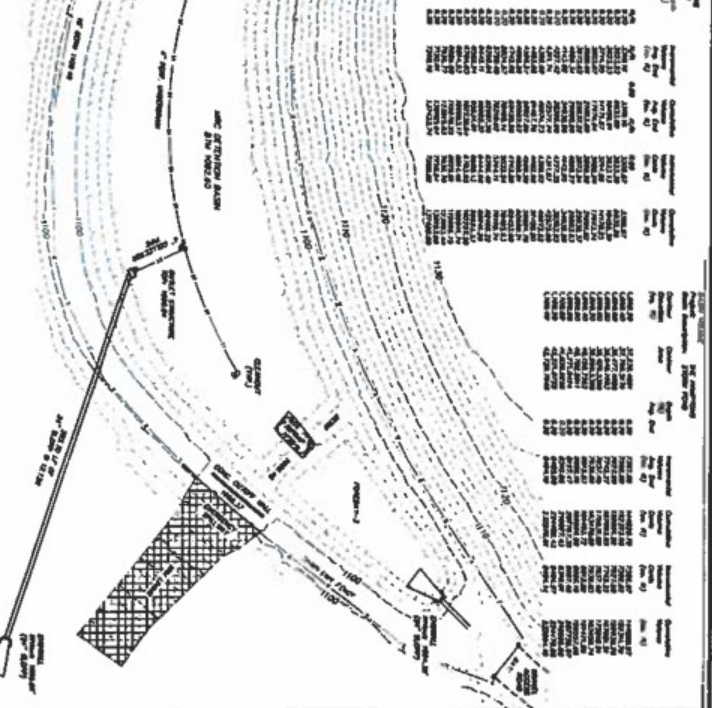
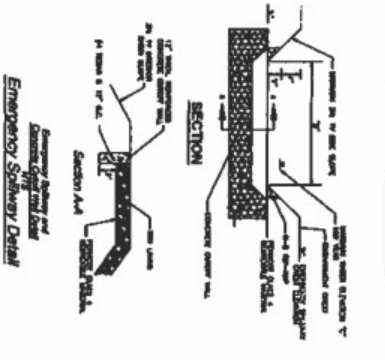
6. The stormwater basin is to be constructed in accordance with the specifications of the Pennsylvania Department of Transportation (PA DOT) and the American Society of Civil Engineers (ASCE).

7. The stormwater basin is to be constructed in accordance with the specifications of the Pennsylvania Department of Transportation (PA DOT) and the American Society of Civil Engineers (ASCE).

8. The stormwater basin is to be constructed in accordance with the specifications of the Pennsylvania Department of Transportation (PA DOT) and the American Society of Civil Engineers (ASCE).

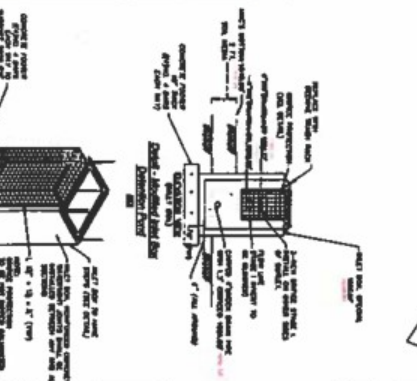
9. The stormwater basin is to be constructed in accordance with the specifications of the Pennsylvania Department of Transportation (PA DOT) and the American Society of Civil Engineers (ASCE).

10. The stormwater basin is to be constructed in accordance with the specifications of the Pennsylvania Department of Transportation (PA DOT) and the American Society of Civil Engineers (ASCE).



STORMWATER MANAGEMENT PLAN - DATA TABLE

NO.	DESCRIPTION	AREA (SQ. FT.)	PERCENT IMPERVIOUS	COEFFICIENT OF DISCHARGE (C)	TIME OF CONCENTRATION (MIN.)	PEAK FLOW (MGD)	PEAK FLOW (MGD)	PEAK FLOW (MGD)
1	ROOF	10,000	100%	0.7	15	1.5	1.5	1.5
2	DRIVEWAY	5,000	100%	0.7	15	0.75	0.75	0.75
3	PAVEMENT	20,000	100%	0.7	15	3.0	3.0	3.0
4	GRASS	100,000	5%	0.3	30	0.15	0.15	0.15
5	SOIL	100,000	0%	0.1	60	0.05	0.05	0.05
6	TOTAL	235,000	33%			5.4	5.4	5.4



Basin's Construction

1. The stormwater basin is to be constructed in accordance with the specifications of the Pennsylvania Department of Transportation (PA DOT) and the American Society of Civil Engineers (ASCE).

2. The stormwater basin is to be constructed in accordance with the specifications of the Pennsylvania Department of Transportation (PA DOT) and the American Society of Civil Engineers (ASCE).

3. The stormwater basin is to be constructed in accordance with the specifications of the Pennsylvania Department of Transportation (PA DOT) and the American Society of Civil Engineers (ASCE).

4. The stormwater basin is to be constructed in accordance with the specifications of the Pennsylvania Department of Transportation (PA DOT) and the American Society of Civil Engineers (ASCE).

5. The stormwater basin is to be constructed in accordance with the specifications of the Pennsylvania Department of Transportation (PA DOT) and the American Society of Civil Engineers (ASCE).

6. The stormwater basin is to be constructed in accordance with the specifications of the Pennsylvania Department of Transportation (PA DOT) and the American Society of Civil Engineers (ASCE).

7. The stormwater basin is to be constructed in accordance with the specifications of the Pennsylvania Department of Transportation (PA DOT) and the American Society of Civil Engineers (ASCE).

8. The stormwater basin is to be constructed in accordance with the specifications of the Pennsylvania Department of Transportation (PA DOT) and the American Society of Civil Engineers (ASCE).

9. The stormwater basin is to be constructed in accordance with the specifications of the Pennsylvania Department of Transportation (PA DOT) and the American Society of Civil Engineers (ASCE).

10. The stormwater basin is to be constructed in accordance with the specifications of the Pennsylvania Department of Transportation (PA DOT) and the American Society of Civil Engineers (ASCE).

PROJECT PLAN

NO.	DESCRIPTION	DATE
1	PROJECT PLAN	11/15/2023
2	REVISION	11/15/2023
3	REVISION	11/15/2023
4	REVISION	11/15/2023
5	REVISION	11/15/2023

THE HAMPTONS SITE STORMWATER BASIN AS-BUILT

TOWNSHIP OF HAMPTON, ALLEGHENY COUNTY, PA

PROJECT NO. 11089-3

DATE: 11/15/2023

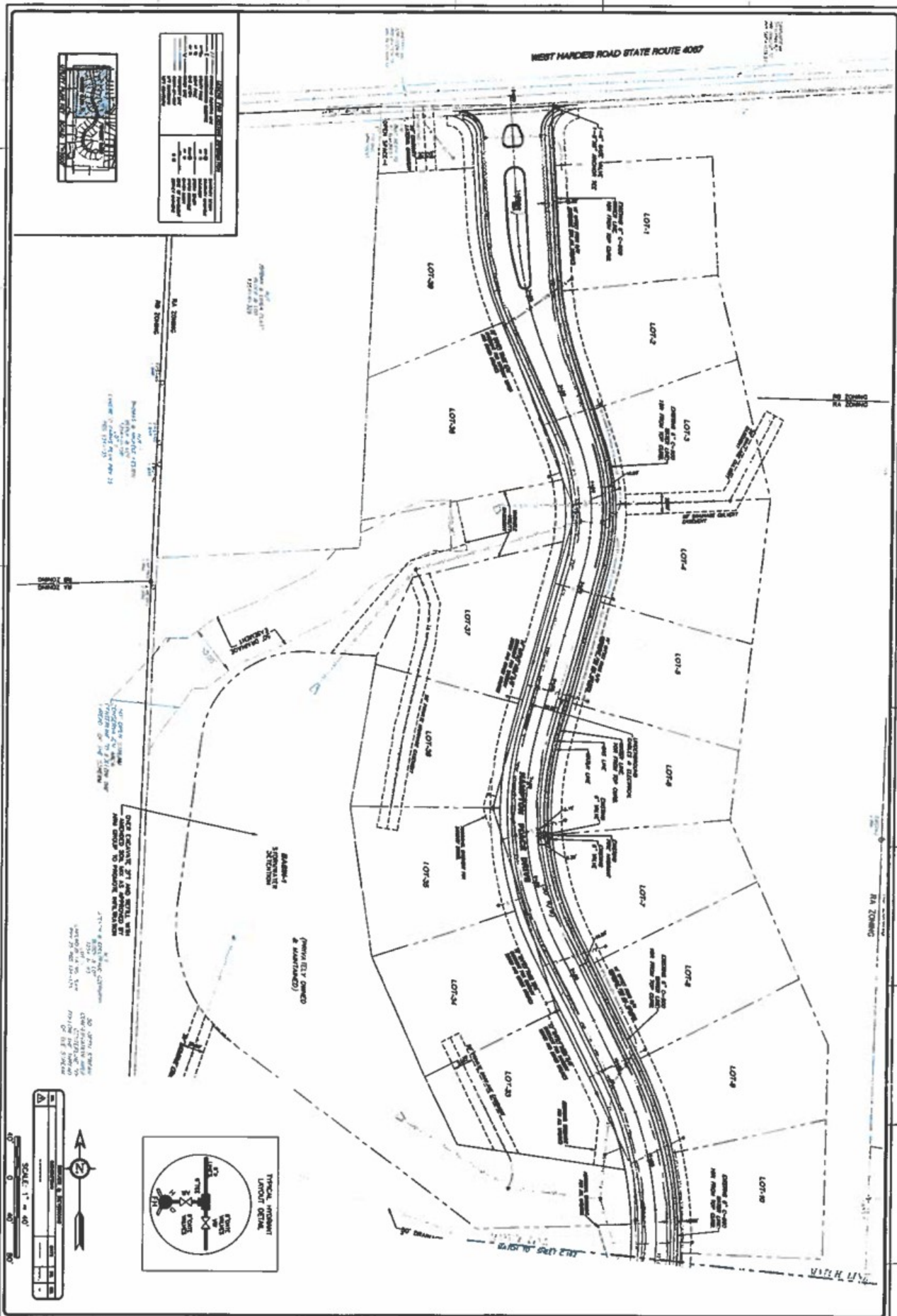
SCALE: AS SHOWN

DESIGNED BY: [Signature]

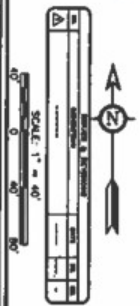
CHECKED BY: [Signature]

APPROVED BY: [Signature]

11089-3

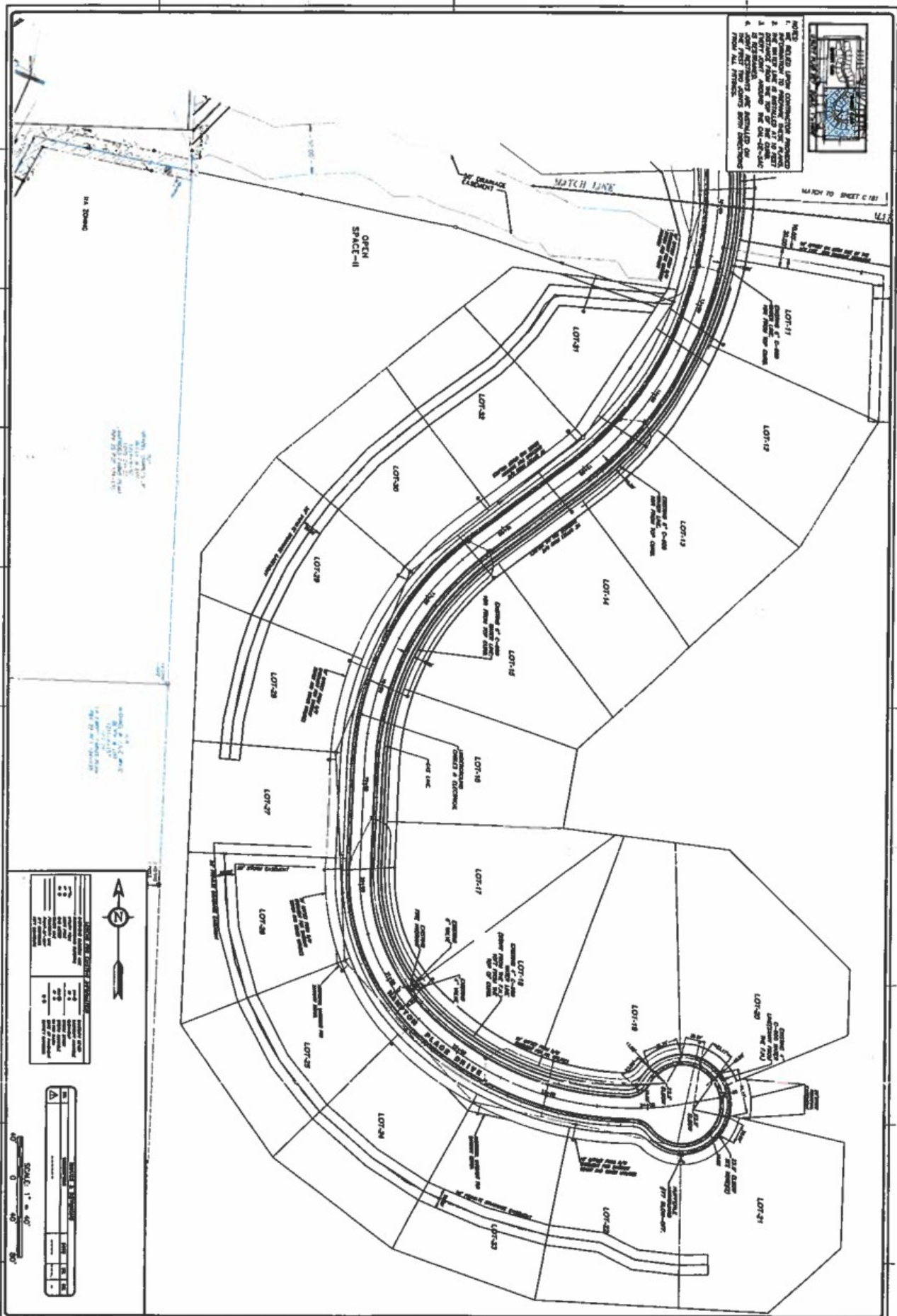


NO.	DESCRIPTION	DATE
1	AS-BUILT WATERLINE	11/15/08
2	AS-BUILT SEWER LINE	11/15/08
3	AS-BUILT GAS LINE	11/15/08
4	AS-BUILT ELECTRIC LINE	11/15/08
5	AS-BUILT TELEPHONE LINE	11/15/08
6	AS-BUILT CABLE TV LINE	11/15/08
7	AS-BUILT FIBER OPTIC LINE	11/15/08
8	AS-BUILT RAINWATER SYSTEM	11/15/08
9	AS-BUILT SWALE	11/15/08
10	AS-BUILT DRIVEWAY	11/15/08
11	AS-BUILT SIDEWALK	11/15/08
12	AS-BUILT CURB	11/15/08
13	AS-BUILT LANDSCAPING	11/15/08
14	AS-BUILT FENCE	11/15/08
15	AS-BUILT DRIVEWAY	11/15/08
16	AS-BUILT SIDEWALK	11/15/08
17	AS-BUILT CURB	11/15/08
18	AS-BUILT LANDSCAPING	11/15/08
19	AS-BUILT FENCE	11/15/08
20	AS-BUILT DRIVEWAY	11/15/08
21	AS-BUILT SIDEWALK	11/15/08
22	AS-BUILT CURB	11/15/08
23	AS-BUILT LANDSCAPING	11/15/08
24	AS-BUILT FENCE	11/15/08
25	AS-BUILT DRIVEWAY	11/15/08
26	AS-BUILT SIDEWALK	11/15/08
27	AS-BUILT CURB	11/15/08
28	AS-BUILT LANDSCAPING	11/15/08
29	AS-BUILT FENCE	11/15/08
30	AS-BUILT DRIVEWAY	11/15/08
31	AS-BUILT SIDEWALK	11/15/08
32	AS-BUILT CURB	11/15/08
33	AS-BUILT LANDSCAPING	11/15/08
34	AS-BUILT FENCE	11/15/08
35	AS-BUILT DRIVEWAY	11/15/08
36	AS-BUILT SIDEWALK	11/15/08
37	AS-BUILT CURB	11/15/08
38	AS-BUILT LANDSCAPING	11/15/08
39	AS-BUILT FENCE	11/15/08
40	AS-BUILT DRIVEWAY	11/15/08
41	AS-BUILT SIDEWALK	11/15/08
42	AS-BUILT CURB	11/15/08
43	AS-BUILT LANDSCAPING	11/15/08
44	AS-BUILT FENCE	11/15/08
45	AS-BUILT DRIVEWAY	11/15/08
46	AS-BUILT SIDEWALK	11/15/08
47	AS-BUILT CURB	11/15/08
48	AS-BUILT LANDSCAPING	11/15/08
49	AS-BUILT FENCE	11/15/08
50	AS-BUILT DRIVEWAY	11/15/08
51	AS-BUILT SIDEWALK	11/15/08
52	AS-BUILT CURB	11/15/08
53	AS-BUILT LANDSCAPING	11/15/08
54	AS-BUILT FENCE	11/15/08
55	AS-BUILT DRIVEWAY	11/15/08
56	AS-BUILT SIDEWALK	11/15/08
57	AS-BUILT CURB	11/15/08
58	AS-BUILT LANDSCAPING	11/15/08
59	AS-BUILT FENCE	11/15/08
60	AS-BUILT DRIVEWAY	11/15/08
61	AS-BUILT SIDEWALK	11/15/08
62	AS-BUILT CURB	11/15/08
63	AS-BUILT LANDSCAPING	11/15/08
64	AS-BUILT FENCE	11/15/08
65	AS-BUILT DRIVEWAY	11/15/08
66	AS-BUILT SIDEWALK	11/15/08
67	AS-BUILT CURB	11/15/08
68	AS-BUILT LANDSCAPING	11/15/08
69	AS-BUILT FENCE	11/15/08
70	AS-BUILT DRIVEWAY	11/15/08
71	AS-BUILT SIDEWALK	11/15/08
72	AS-BUILT CURB	11/15/08
73	AS-BUILT LANDSCAPING	11/15/08
74	AS-BUILT FENCE	11/15/08
75	AS-BUILT DRIVEWAY	11/15/08
76	AS-BUILT SIDEWALK	11/15/08
77	AS-BUILT CURB	11/15/08
78	AS-BUILT LANDSCAPING	11/15/08
79	AS-BUILT FENCE	11/15/08
80	AS-BUILT DRIVEWAY	11/15/08
81	AS-BUILT SIDEWALK	11/15/08
82	AS-BUILT CURB	11/15/08
83	AS-BUILT LANDSCAPING	11/15/08
84	AS-BUILT FENCE	11/15/08
85	AS-BUILT DRIVEWAY	11/15/08
86	AS-BUILT SIDEWALK	11/15/08
87	AS-BUILT CURB	11/15/08
88	AS-BUILT LANDSCAPING	11/15/08
89	AS-BUILT FENCE	11/15/08
90	AS-BUILT DRIVEWAY	11/15/08
91	AS-BUILT SIDEWALK	11/15/08
92	AS-BUILT CURB	11/15/08
93	AS-BUILT LANDSCAPING	11/15/08
94	AS-BUILT FENCE	11/15/08
95	AS-BUILT DRIVEWAY	11/15/08
96	AS-BUILT SIDEWALK	11/15/08
97	AS-BUILT CURB	11/15/08
98	AS-BUILT LANDSCAPING	11/15/08
99	AS-BUILT FENCE	11/15/08
100	AS-BUILT DRIVEWAY	11/15/08



<p>C161</p> <p>17-11098-1</p>	<p>THE HAMPTONS WATERLINE AS-BUILT TOWNSHIP OF HAMPTON, ALLEGHENY COUNTY, PENNSYLVANIA</p> <p>THE HAMPTONS, LP. 275 COLDFRIDE DRIVE, ALLEGHENY CO. PA.</p>	<p>HAMPTON TECHNICAL ASSOCIATES, INC. ENGINEERING AND SURVEYING ESTABLISHED 1980 www.Hampton-Technical.com 412-261-1100 ext-200 412-261-1100 ext-200</p>	<p>LEGEND</p> <p>AS-BUILT WATERLINE</p> <p>AS-BUILT SEWER LINE</p> <p>AS-BUILT GAS LINE</p> <p>AS-BUILT ELECTRIC LINE</p> <p>AS-BUILT TELEPHONE LINE</p> <p>AS-BUILT CABLE TV LINE</p> <p>AS-BUILT FIBER OPTIC LINE</p> <p>AS-BUILT RAINWATER SYSTEM</p> <p>AS-BUILT SWALE</p> <p>AS-BUILT DRIVEWAY</p> <p>AS-BUILT SIDEWALK</p> <p>AS-BUILT CURB</p> <p>AS-BUILT LANDSCAPING</p> <p>AS-BUILT FENCE</p>
--------------------------------------	--	---	--

- NOTES:**
1. SEE RELATED LAYOUT CONSTRUCTION PERMITS
 2. THE EXISTING CURB IS INDICATED BY A DOTTED LINE
 3. EXISTING DRIVE AND SIDEWALK ARE INDICATED BY A DOTTED LINE
 4. THE DRIVE AND SIDEWALK ARE INDICATED BY A DOTTED LINE
 5. THE DRIVE AND SIDEWALK ARE INDICATED BY A DOTTED LINE



LEGEND FOR THE WATERLINE AS-BUILT

Symbol	Description
(Symbol)	Waterline
(Symbol)	Valve
(Symbol)	Connection
(Symbol)	Existing Drive and Sidewalk
(Symbol)	Open Space-II
(Symbol)	Drainage Easment



SCALE: 1" = 40'

0	20	40	80
---	----	----	----

C-162

DATE: 11-10-09

PROJECT: THE HAMPTONS WATERLINE AS-BUILT

CLIENT: THE HAMPTONS, LP.

THE HAMPTONS WATERLINE AS-BUILT

TOWNSHIP OF HAMPTON, ALLEGHENY COUNTY, PENNSYLVANIA

CLIENT: THE HAMPTONS, LP.

375 GOLFIDE DRIVE, ALLEGHENY CO, PA.

HAMPTON TECHNICAL ASSOCIATES, INC.

REGISTERED LAND SURVEYORS

ESTABLISHED 1980

www.Hampton-Technical.com

HAMPTON TECHNICAL ASSOCIATES, INC.

REGISTERED LAND SURVEYORS

ESTABLISHED 1980

www.Hampton-Technical.com

