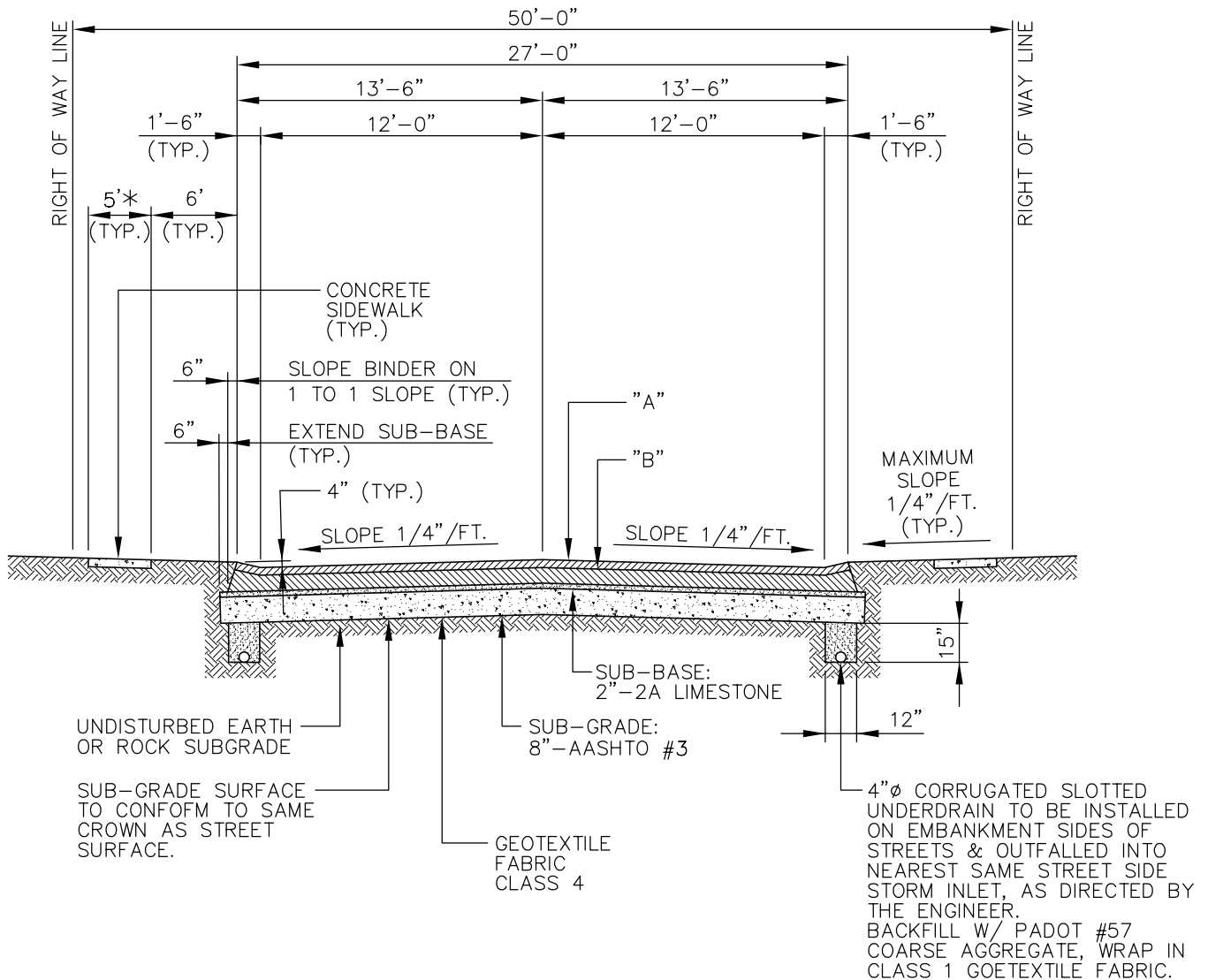


Drawing: K:\Mercer\CLIENTS\LANCASTER\STANDARDS\DWGS\1 REV 1.dwg Plotted: Jun 27, 2016 - 7:16am



"A" - 2" 19MM BINDER & 1 1/2" 9.5MM WEARING.

"B" - 4" 25MM BINDER COURSE.

* FOR NON-RESIDENTIAL INCREASE WIDTH TO 6'

SCALE: NONE

TYPICAL RESIDENTIAL STREET SECTION

NO.	DATE	NO.	DATE
		1	JUNE 2016
		ORIGINAL	JANUARY 2007

SHEET NO.

1

REVISIONS

REVISIONS