

INTRODUCED BY: Councilmember Bwayne Smotherson

DATE: January 22, 2024

BILL NO.: 9536

ORDINANCE NO.: 7349

AN ORDINANCE APPROVING A FINAL PLAT FOR A MAJOR SUBDIVISION OF A TRACT OF LAND TO BE KNOWN AS "URBAN SPROUTS."

WHEREAS, an application was submitted by 6757 Olive Holdings for the approval of a final subdivision plat of a tract of land at 6757, 6767, 6771 and 6773 Olive Boulevard to be known as "Urban Sprouts"; and

WHEREAS, at its meeting on December 6, 2023, the University City Plan Commission reviewed the final plat for the major subdivision and determined that the final plat is in substantial compliance with the requirements of the University City Municipal Code and recommended to the City Council approval of the final plat; and

WHEREAS, the final plat for the major subdivision application, including all required documents submitted therewith, is before the City Council for its consideration.

NOW, THEREFORE, BE IT ORDAINED BY THE COUNCIL OF THE CITY OF UNIVERSITY CITY, MISSOURI, AS FOLLOWS:

Section 1. Attached, marked "Exhibit A", and made a part hereof is a final subdivision of a tract of land to be known as "Urban Sprouts."

Section 2. It is hereby found and determined that the final plat for the major subdivision is in full compliance with the University City Municipal Code, including Sections 405.380 and 405.390. Accordingly, the final plat for the major subdivision marked "Exhibit A" is hereby approved.

Section 3. The City Clerk is hereby directed to endorse upon the final plat for the major subdivision the approval of the City Council under the hand of the City Clerk and the seal of the City of University City.

Section 4. This ordinance shall take effect and be in force from and after its passage as provided by law.

PASSED and ADOPTED this 12th day February, 2024.


MAYOR PRO TEM

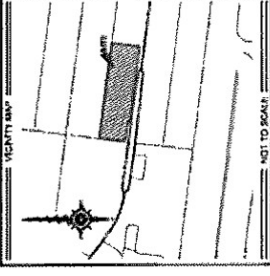
ATTEST:

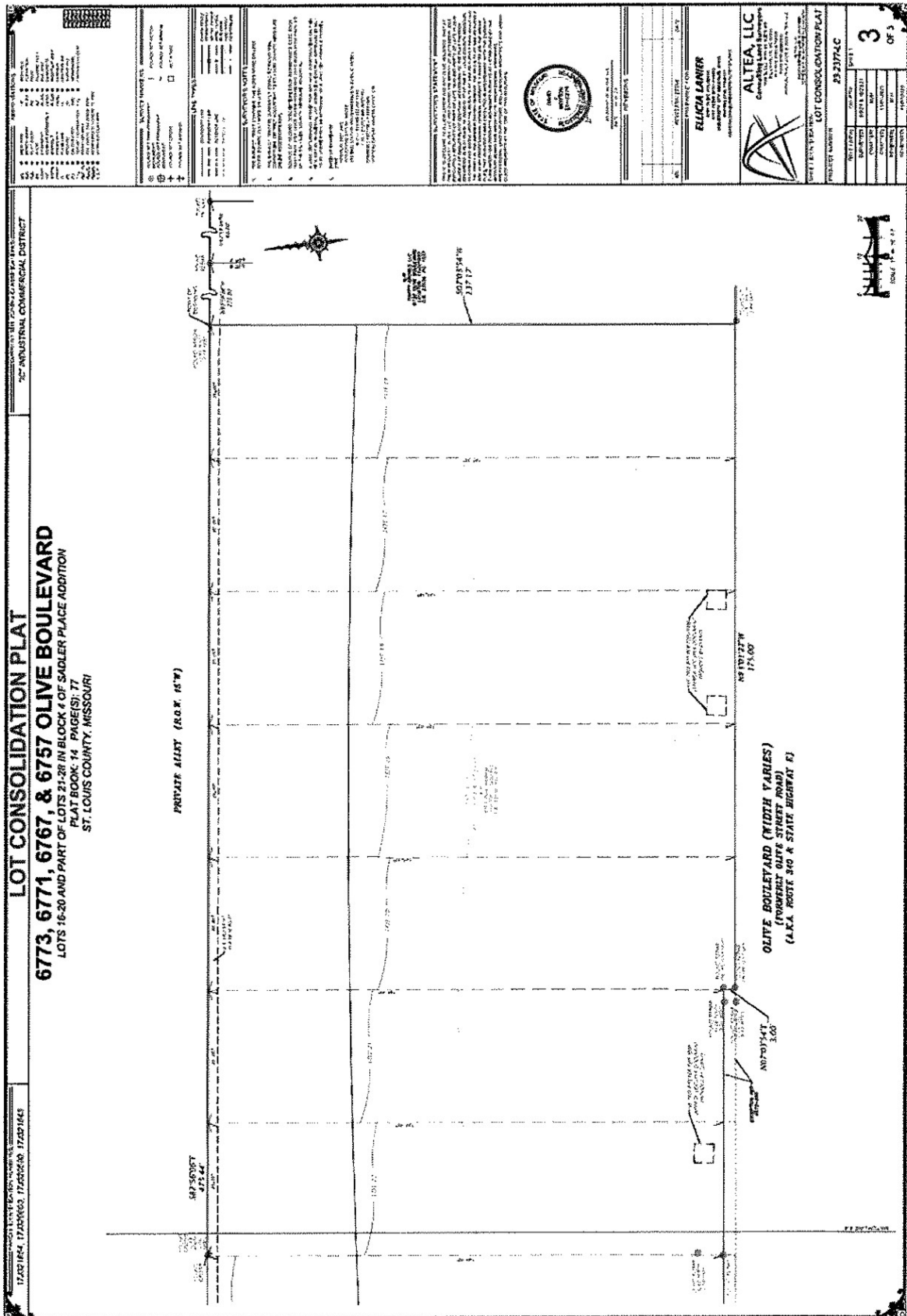

CITY CLERK

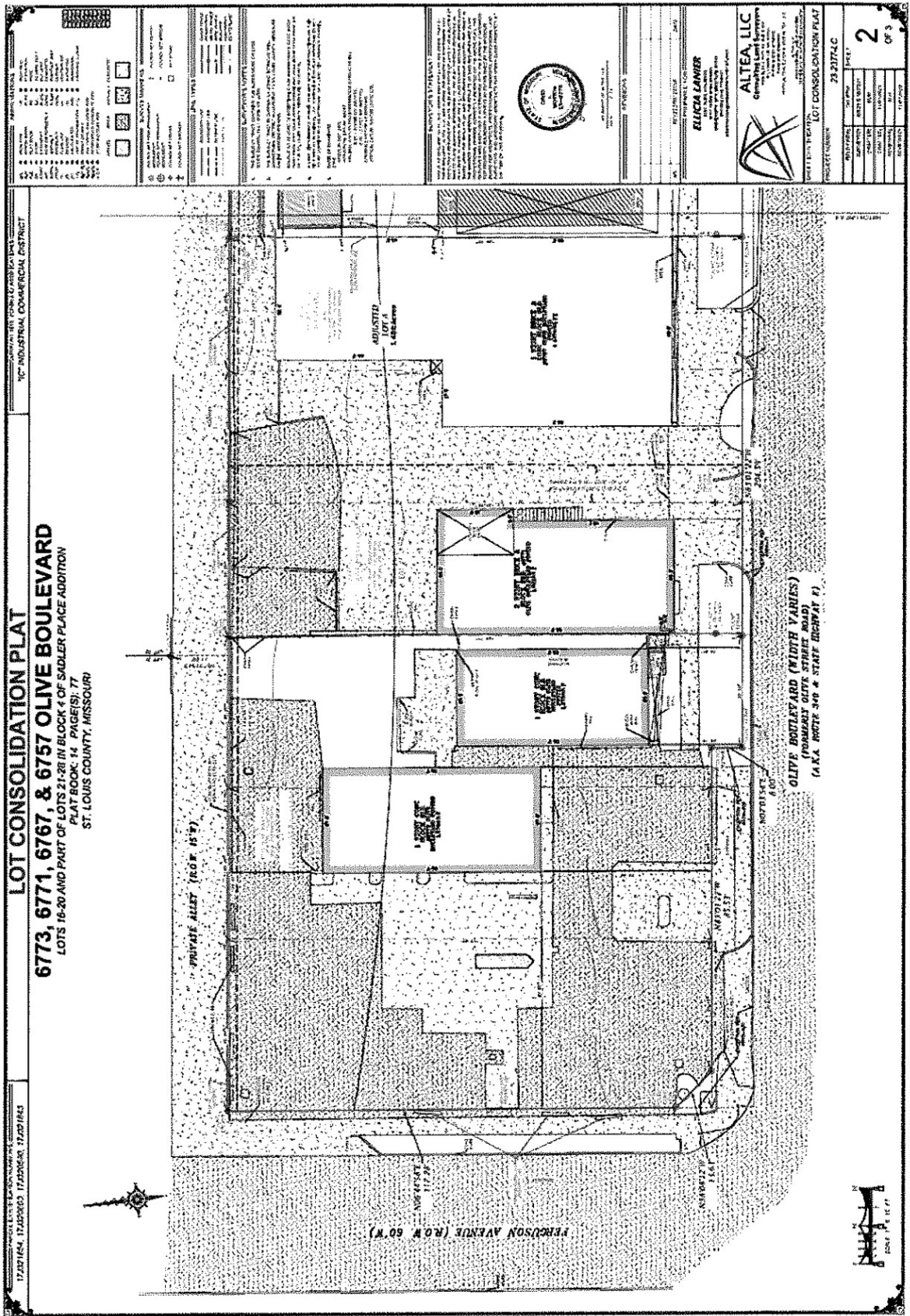
CERTIFIED TO BE CORRECT AS TO FORM:


CITY ATTORNEY



<p style="text-align: center;">LOT CONSOLIDATION PLAT 6773, 6771, 6767, & 6757 OLIVE BOULEVARD LOTS 16-20 AND PART OF LOTS 21-28 IN BLOCK 4 OF SADLER PLACE ADDITION PLAT BOOK: 14 - PAGE(S): 77 ST. LOUIS COUNTY, MISSOURI</p>	<p style="text-align: center;">10" INDUSTRIAL COMMERCIAL DISTRICT</p> 	<p>GENERAL NOTES:</p> <ol style="list-style-type: none"> 1. THIS PLAT IS THE RESULT OF THE MERGERS OF THE LOTS AND PARTS OF LOTS SHOWN IN THE PREVIOUS PLATS RECORDED IN PLAT BOOK 14, PAGES 77. 2. THE LOTS AND PARTS OF LOTS SHOWN IN THIS PLAT ARE THE SAME AS SHOWN IN THE PREVIOUS PLATS. 3. THE BOUNDARIES SHOWN IN THIS PLAT ARE THE SAME AS SHOWN IN THE PREVIOUS PLATS. 4. THE AREA SHOWN IN THIS PLAT IS THE SAME AS SHOWN IN THE PREVIOUS PLATS. 5. THE DISTRICT SHOWN IN THIS PLAT IS THE SAME AS SHOWN IN THE PREVIOUS PLATS. 6. THE PLAT IS SUBJECT TO THE RECORDS OF THE ST. LOUIS COUNTY RECORDS. 7. THE PLAT IS SUBJECT TO THE RECORDS OF THE ST. LOUIS COUNTY RECORDS. 8. THE PLAT IS SUBJECT TO THE RECORDS OF THE ST. LOUIS COUNTY RECORDS. 9. THE PLAT IS SUBJECT TO THE RECORDS OF THE ST. LOUIS COUNTY RECORDS. 10. THE PLAT IS SUBJECT TO THE RECORDS OF THE ST. LOUIS COUNTY RECORDS.
<p>PROPERTY DESCRIPTION:</p> <p>LOT 16, PART OF LOT 17, LOT 18, LOT 19, LOT 20, PART OF LOT 21, PART OF LOT 22, PART OF LOT 23, PART OF LOT 24, PART OF LOT 25, PART OF LOT 26, PART OF LOT 27, PART OF LOT 28.</p>	<p>LEGAL DESCRIPTION:</p> <p>LOT 16, PART OF LOT 17, LOT 18, LOT 19, LOT 20, PART OF LOT 21, PART OF LOT 22, PART OF LOT 23, PART OF LOT 24, PART OF LOT 25, PART OF LOT 26, PART OF LOT 27, PART OF LOT 28.</p>	<p>EXEMPTIONS:</p> <p>None.</p>
<p>PLAT DATA:</p> <p>DATE: 11/15/2011 TIME: 10:00 AM DRAWN BY: [Name] CHECKED BY: [Name]</p>	<p>NOTARIAL STATEMENT:</p> <p>I, the undersigned, being a duly qualified and acting Notary Public in and for the State of Missouri, do hereby certify that the foregoing is a true and correct copy of the original plat as the same appears of record in my office.</p> <p>My Commission Expires: 11/15/2013</p>	<p>RECORDING INFORMATION:</p> <p>PLAT BOOK: 14 - PAGE(S): 77 RECORDING DATE: 11/15/2011 RECORDING TIME: 10:00 AM</p>





LOT CONSOLIDATION PLAT
6773, 6771, 6767, & 6757 OLIVE BOULEVARD
 LOTS 16-20 AND PART OF LOTS 21-28 IN BLOCK 4 OF SADDLER PLACE ADDITION
 PLAT BOOK: 14 - PAGES: 77
 ST. LOUIS COUNTY, MISSOURI

17-23716-4, 17-23720-3, 17-23726-3, 17-23718-3

17-23716-4, 17-23720-3, 17-23726-3, 17-23718-3

17-23716-4, 17-23720-3, 17-23726-3, 17-23718-3

ADJUSTED LOT 16

ADJUSTED LOT 17

ADJUSTED LOT 18

ADJUSTED LOT 19

ADJUSTED LOT 20

17-23716-4, 17-23720-3, 17-23726-3, 17-23718-3

17-23716-4, 17-23720-3, 17-23726-3, 17-23718-3

17-23716-4, 17-23720-3, 17-23726-3, 17-23718-3

17-23716-4, 17-23720-3, 17-23726-3, 17-23718-3

17-23716-4, 17-23720-3, 17-23726-3, 17-23718-3

17-23716-4, 17-23720-3, 17-23726-3, 17-23718-3

17-23716-4, 17-23720-3, 17-23726-3, 17-23718-3

17-23716-4, 17-23720-3, 17-23726-3, 17-23718-3

17-23716-4, 17-23720-3, 17-23726-3, 17-23718-3

17-23716-4, 17-23720-3, 17-23726-3, 17-23718-3

17-23716-4, 17-23720-3, 17-23726-3, 17-23718-3

17-23716-4, 17-23720-3, 17-23726-3, 17-23718-3

17-23716-4, 17-23720-3, 17-23726-3, 17-23718-3

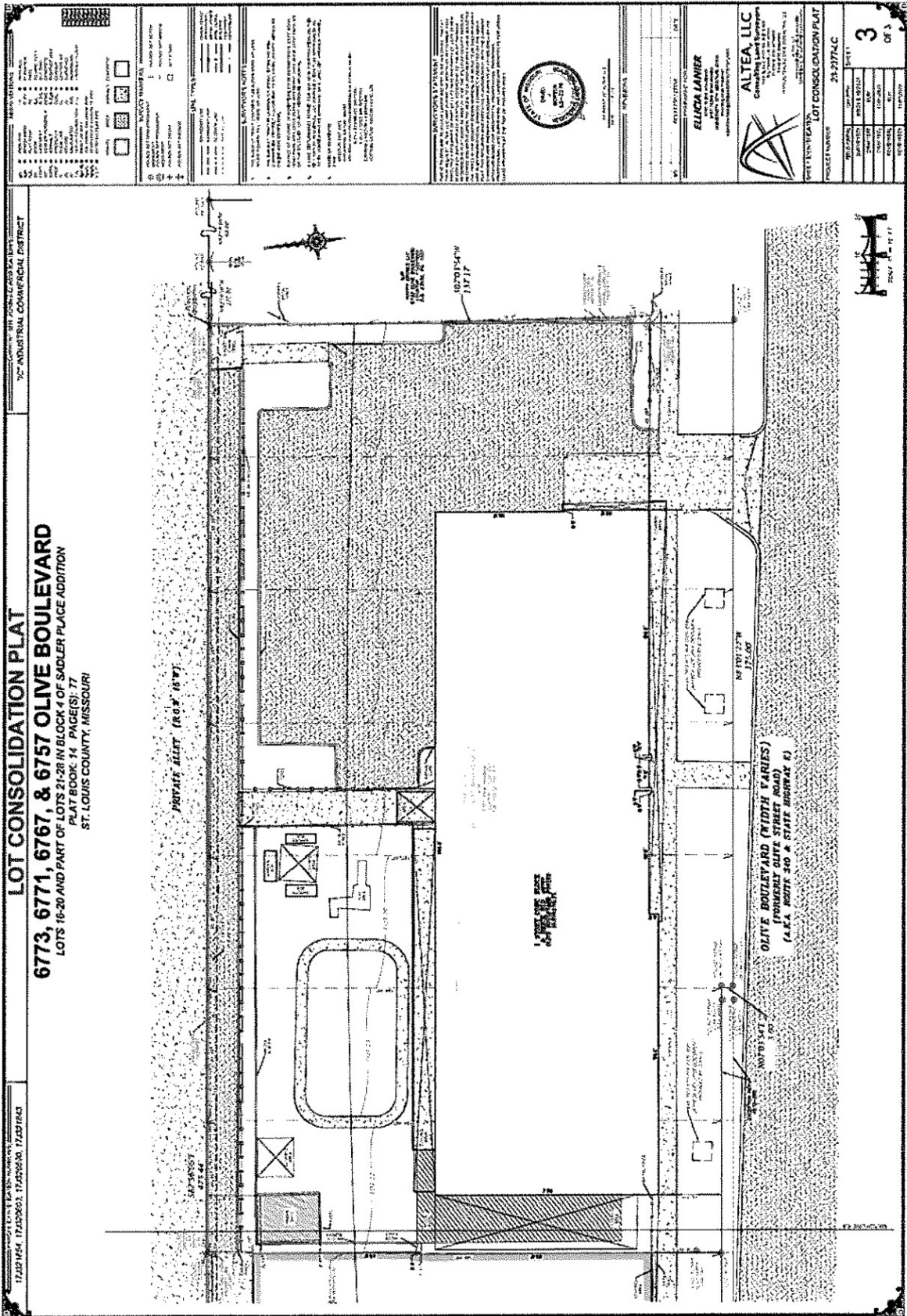
17-23716-4, 17-23720-3, 17-23726-3, 17-23718-3

17-23716-4, 17-23720-3, 17-23726-3, 17-23718-3

17-23716-4, 17-23720-3, 17-23726-3, 17-23718-3

17-23716-4, 17-23720-3, 17-23726-3, 17-23718-3

17-23716-4, 17-23720-3, 17-23726-3, 17-23718-3



72\"/>

LOT CONSOLIDATION PLAT
6773, 6771, 6767, & 6757 OLIVE BOULEVARD
 LOTS 16-20 AND PART OF LOTS 21-28 IN BLOCK 4 OF SADDLER PLACE ADDITION
 PLAT BOOK 11, PAGES 15, 17
 ST. LOUIS COUNTY, MISSOURI

17427454, 17427453, 17427450, 17427443

<p>ALTEA LLC Consulting Land Engineers 1000 N. GARDNER ST., SUITE 100 ST. LOUIS, MISSOURI 63102 TEL: 314.241.1000 WWW.ALTEAENGINEERS.COM</p>		<p>ELIUCH LANIER 1000 N. GARDNER ST., SUITE 100 ST. LOUIS, MISSOURI 63102 TEL: 314.241.1000 WWW.ALTEAENGINEERS.COM</p>
<p>LOT CONSOLIDATION PLAT PROJECT NUMBER: 24-2774-C</p>		<p>3 OF 3</p>