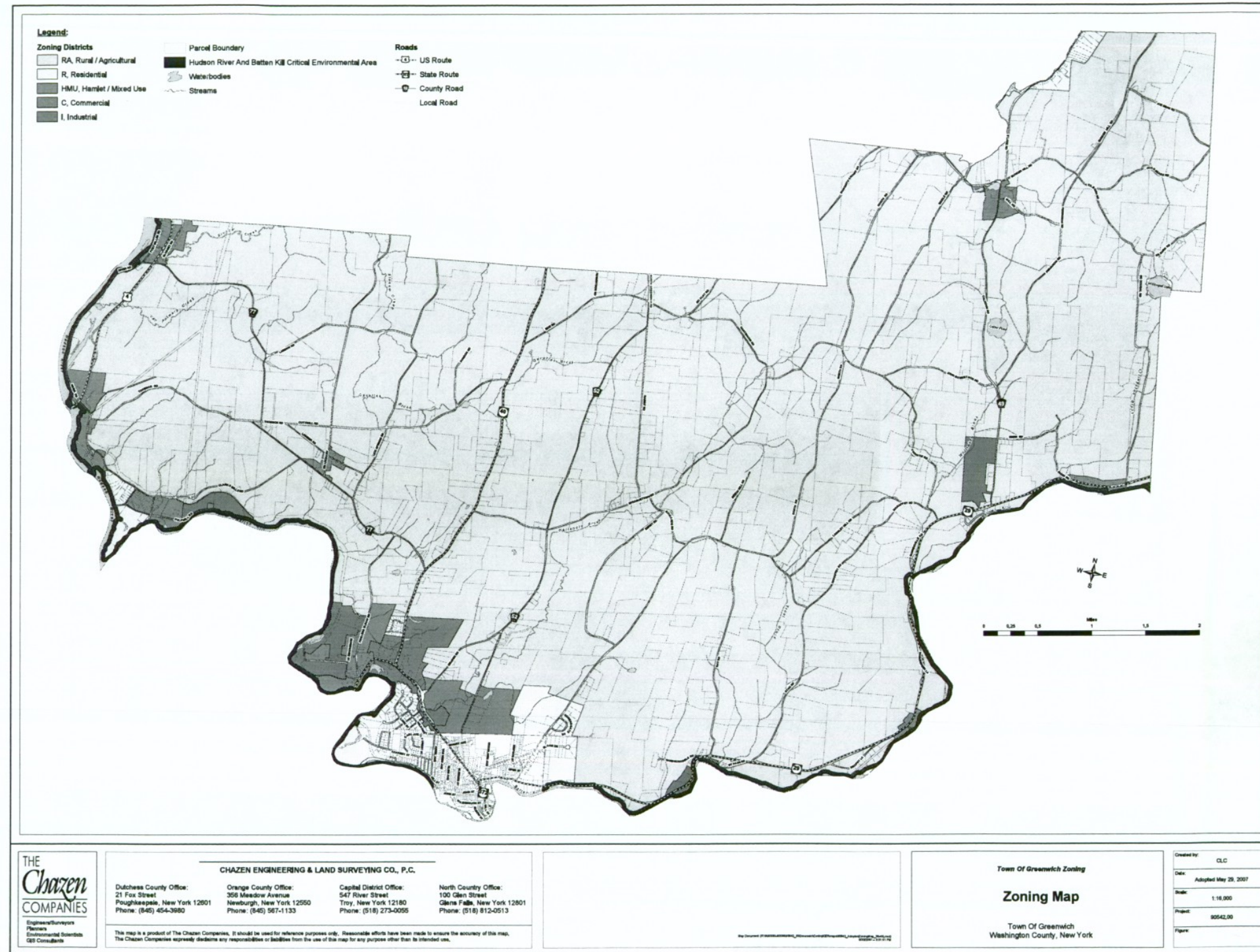


ZONING

190 Attachment 8

Town of Greenwich
Zoning Map



THE Chazen COMPANIES
Engineers/Surveyors
Planners
Environmental Scientists
GIS Consultants

CHAZEN ENGINEERING & LAND SURVEYING CO., P.C.

Dutchess County Office: 21 Fox Street Poughkeepsie, New York 12601 Phone: (845) 454-3680	Orange County Office: 358 Meadow Avenue Newburgh, New York 12550 Phone: (845) 567-1133	Capital District Office: 547 River Street Troy, New York 12180 Phone: (518) 273-0055	North Country Office: 100 Glen Street Glens Falls, New York 12061 Phone: (518) 812-0513
---	---	---	--

This map is a product of The Chazen Companies. It should be used for reference purposes only. Reasonable efforts have been made to ensure the accuracy of this map. The Chazen Companies expressly disclaims any responsibility or liability from the use of this map for any purpose other than its intended use.

Town Of Greenwich Zoning

Zoning Map

Town Of Greenwich
Washington County, New York

Created by:	CLC
Date:	Adopted May 29, 2007
Scale:	1:16,000
Project:	80542.00
Figure:	