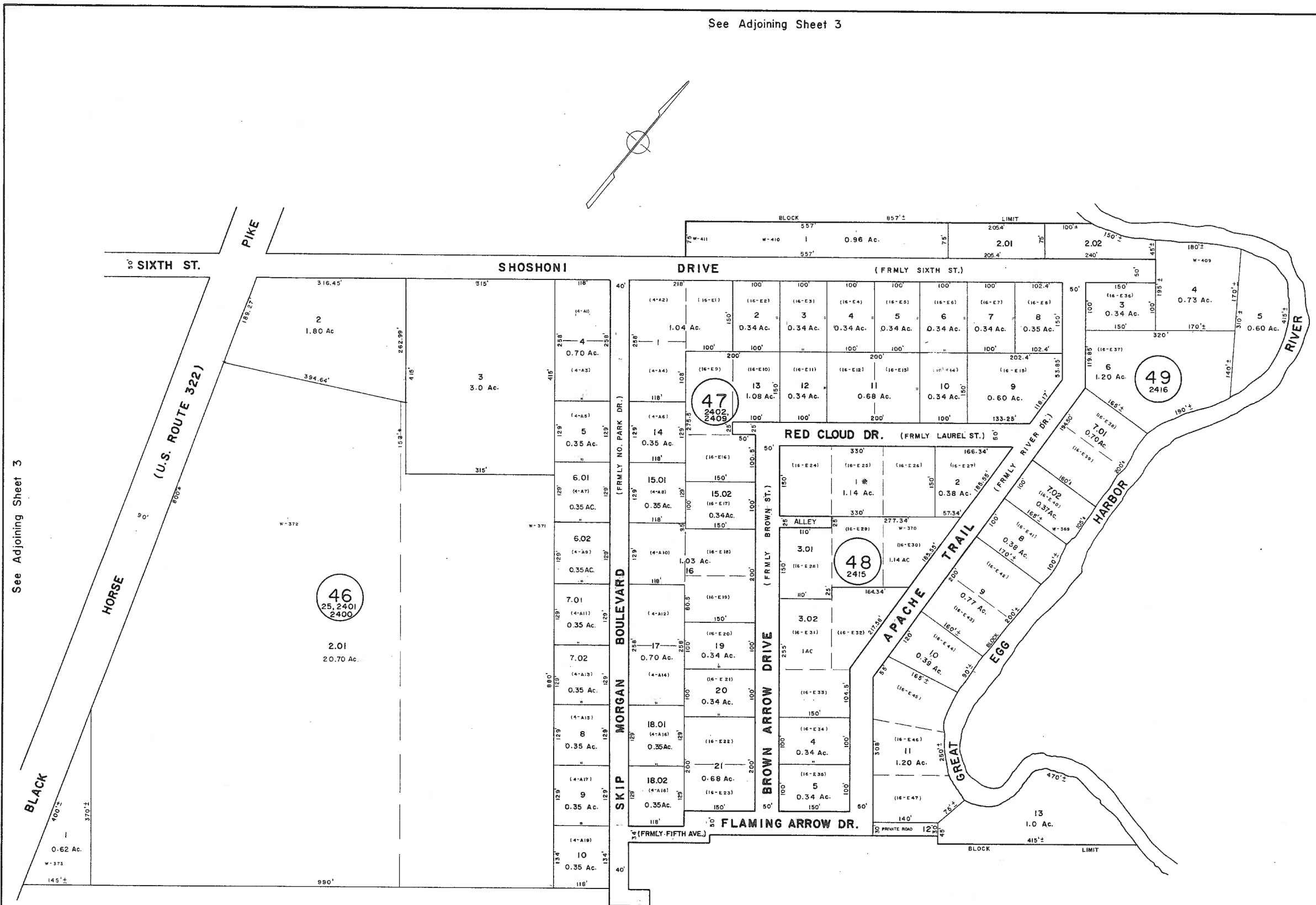


See Adjoining Sheet 3



See Adjoining Sheet 3

See Adjoining Sheet 3

NEW JERSEY DEPARTMENT OF THE TREASURY  
 DIVISION OF TAXATION  
 LOCAL PROPERTY TAX AND PUBLIC UTILITY BRANCH  
 APPROVED AS A TAX MAP PURSUANT TO THE  
 PROVISIONS OF CHAPTER 175, LAWS OF 1952, ETC.  
 FOR THE DIVISION OF TAXATION

*Steven J. Hoffmann*  
 BY: P.E. & L.S.  
 LIC. #35434 CHIEF ENGINEERING SECTION  
 DATE: JAN 22 1986 SERIAL NO. 654

NEW JERSEY DEPARTMENT OF THE TREASURY  
 DIVISION OF TAXATION  
 LOCAL PROPERTY TAX AND PUBLIC UTILITY BRANCH  
 APPROVED AS A TAX MAP PURSUANT TO THE  
 PROVISIONS OF CHAPTER 175, LAWS OF 1952, ETC.  
 FOR THE DIVISION OF TAXATION

*J. H. ...*  
 BY: P.E. & L.S.  
 LIC. #5009 CHIEF  
 DATE: MAR 16 1978 SERIAL NO. 578

\* EXEMPT TOWNSHIP OF HAMILTON  
 NOTE: LETTER "W" INDICATES NUMBER ON MAP OF WEYMOUTH FARM & AGRICULTURAL COMPANY  
 NUMBERS IN PARENTHESIS DENOTES LOTS ON MAP OF INDIAN BRANCH PARK.

TAX MAP  
 TOWNSHIP OF HAMILTON  
 ATLANTIC COUNTY, NEW JERSEY  
 SCALE: 1" = 100' DATE: JUNE 1, 1977

RONALD J. PRICE  
 PLEASANTVILLE, N.J.  
 N.J. LICENSE NO. 13501

See Adjoining Sheet 3.02

REV. BY ALEXANDER M. CHURCHILL ASSOC.-JAN'96 REVISIONS WPHA 6-13-85  
 REV. BY CHURCHILL- NOV. 2001, FEB. 2008