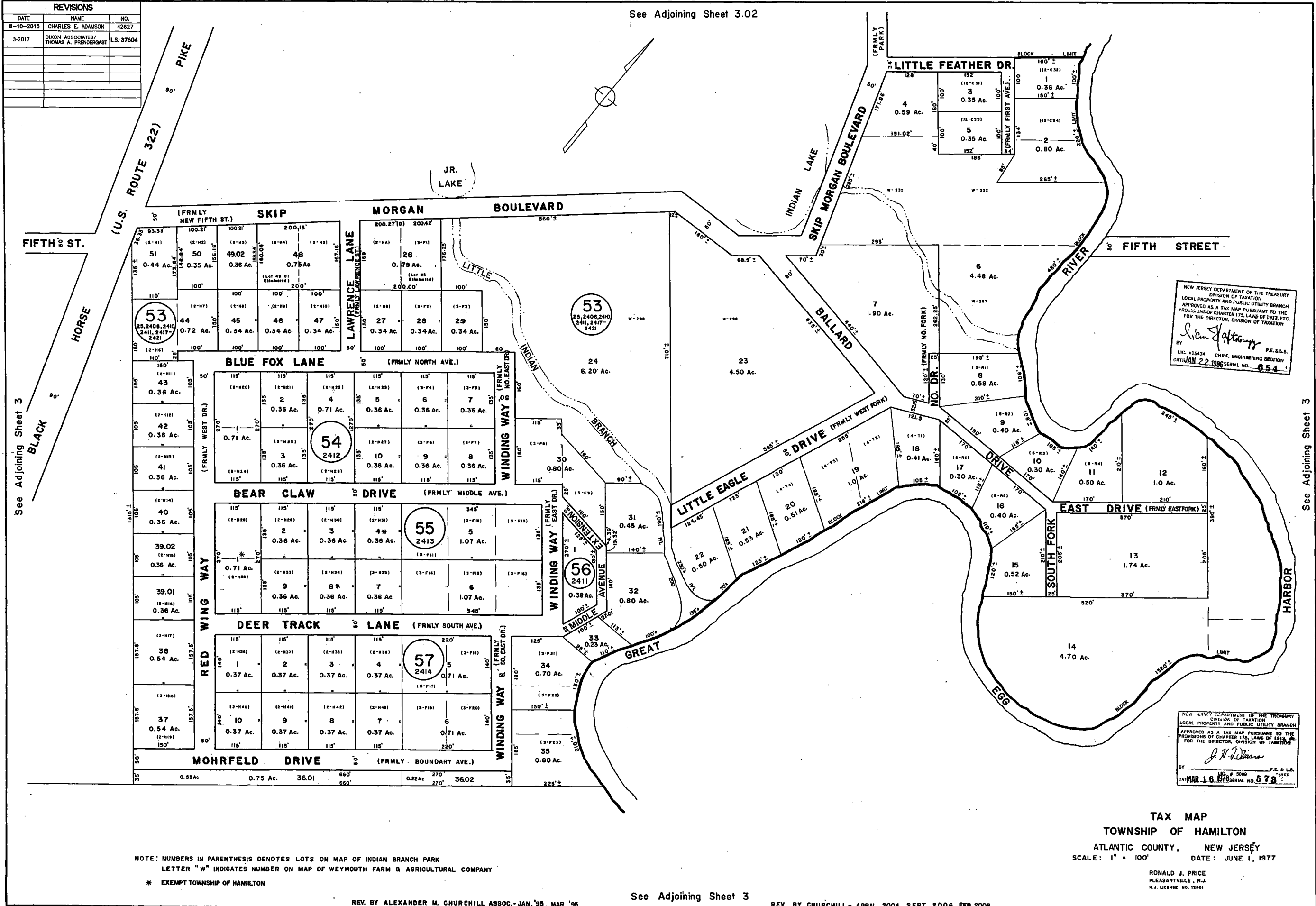


See Adjoining Sheet 3.02

REVISIONS		
DATE	NAME	NO.
8-10-2015	CHARLES E. ADAMSON	42627
3-2017	DIXON ASSOCIATES/ THOMAS A. FRENDEBERG	L.S. 37604



NEW JERSEY DEPARTMENT OF THE TREASURY
DIVISION OF TAXATION
LOCAL PROPERTY AND PUBLIC UTILITY BRANCH
APPROVED AS A TAX MAP PURSUANT TO THE
PROVISIONS OF CHAPTER 175, LAWS OF 1978, ETC.
FOR THE DIRECTOR, DIVISION OF TAXATION

Susan J. Hattaway
BY
LIC. #15434 P.E. & L.S.
CHIEF, ENGINEERING SECTION
DATE JAN 22 1996 SERIAL NO. 054

NEW JERSEY DEPARTMENT OF THE TREASURY
DIVISION OF TAXATION
LOCAL PROPERTY AND PUBLIC UTILITY BRANCH
APPROVED AS A TAX MAP PURSUANT TO THE
PROVISIONS OF CHAPTER 175, LAWS OF 1978, ETC.
FOR THE DIRECTOR, DIVISION OF TAXATION

J. H. Price
BY
LIC. # 5009 P.E. & L.S.
DATE MAR 16 1978 SERIAL NO. 578

NOTE: NUMBERS IN PARENTHESIS DENOTES LOTS ON MAP OF INDIAN BRANCH PARK
LETTER "W" INDICATES NUMBER ON MAP OF WEYMOUTH FARM & AGRICULTURAL COMPANY
* EXEMPT TOWNSHIP OF HAMILTON

TAX MAP
TOWNSHIP OF HAMILTON
ATLANTIC COUNTY, NEW JERSEY
SCALE: 1" = 100' DATE: JUNE 1, 1977

RONALD J. PRICE
PLEASANTVILLE, N.J.
N.J. LICENSE NO. 13801

REV. BY ALEXANDER M. CHURCHILL ASSOC. - JAN. '95, MAR. '96

See Adjoining Sheet 3

REV. BY CHURCHILL - APRIL 2004, SEPT. 2006, FEB. 2008

See Adjoining Sheet 3

See Adjoining Sheet 3