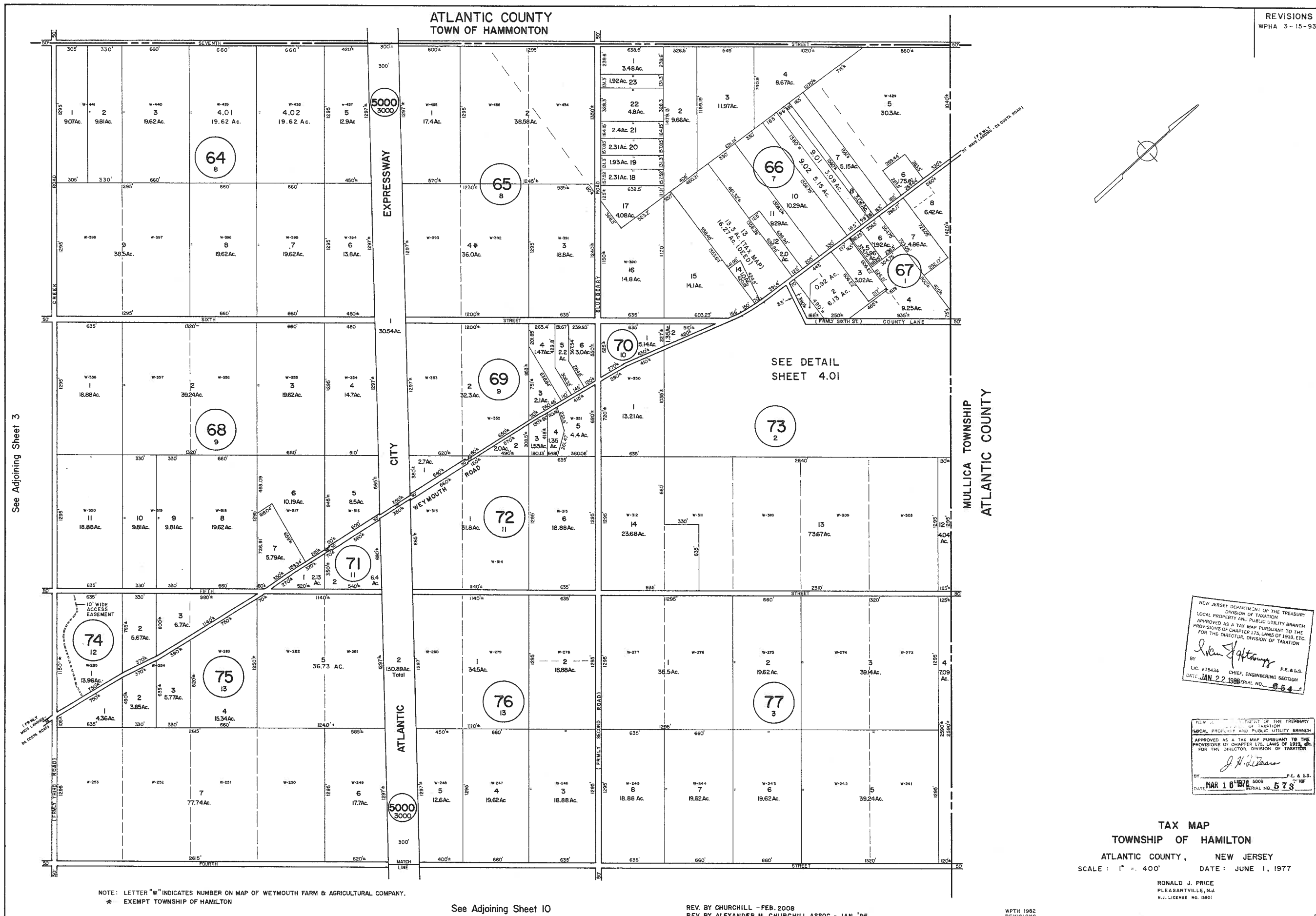


ATLANTIC COUNTY
TOWN OF HAMMONTON

REVISIONS
WPHA 3-15-93



See Adjoining Sheet 3

See Adjoining Sheet 10

NOTE: LETTER "W" INDICATES NUMBER ON MAP OF WEYMOUTH FARM & AGRICULTURAL COMPANY.
* - EXEMPT TOWNSHIP OF HAMILTON

REV. BY CHURCHILL - FEB. 2008
REV. BY ALEXANDER M. CHURCHILL ASSOC. - JAN. '95

WPTH 1982
REVISIONS

NEW JERSEY DEPARTMENT OF THE TREASURY
DIVISION OF TAXATION
LOCAL PROPERTY AND PUBLIC UTILITY BRANCH
APPROVED AS A TAX MAP PURSUANT TO THE
PROVISIONS OF CHAPTER 175, LAWS OF 1973, ETC.
FOR THE DIRECTOR, DIVISION OF TAXATION

John J. Anthony
BY: P.E. & L.S.
LIC. #15434 CHIEF, ENGINEERING SECTION
DATE: JAN 22 1988 SERIAL NO. 654

NEW JERSEY DEPARTMENT OF THE TREASURY
DIVISION OF TAXATION
LOCAL PROPERTY AND PUBLIC UTILITY BRANCH
APPROVED AS A TAX MAP PURSUANT TO THE
PROVISIONS OF CHAPTER 175, LAWS OF 1973, ETC.
FOR THE DIRECTOR, DIVISION OF TAXATION

J. H. Williams
BY: P.E. & L.S.
DATE: MAR 10 1978 SERIAL NO. 573

TAX MAP
TOWNSHIP OF HAMILTON
ATLANTIC COUNTY, NEW JERSEY
SCALE: 1" = 400' DATE: JUNE 1, 1977

RONALD J. PRICE
PLEASANTVILLE, N.J.
N.J. LICENSE NO. 13901