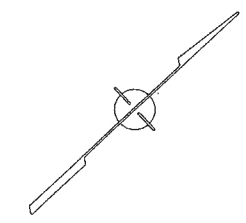
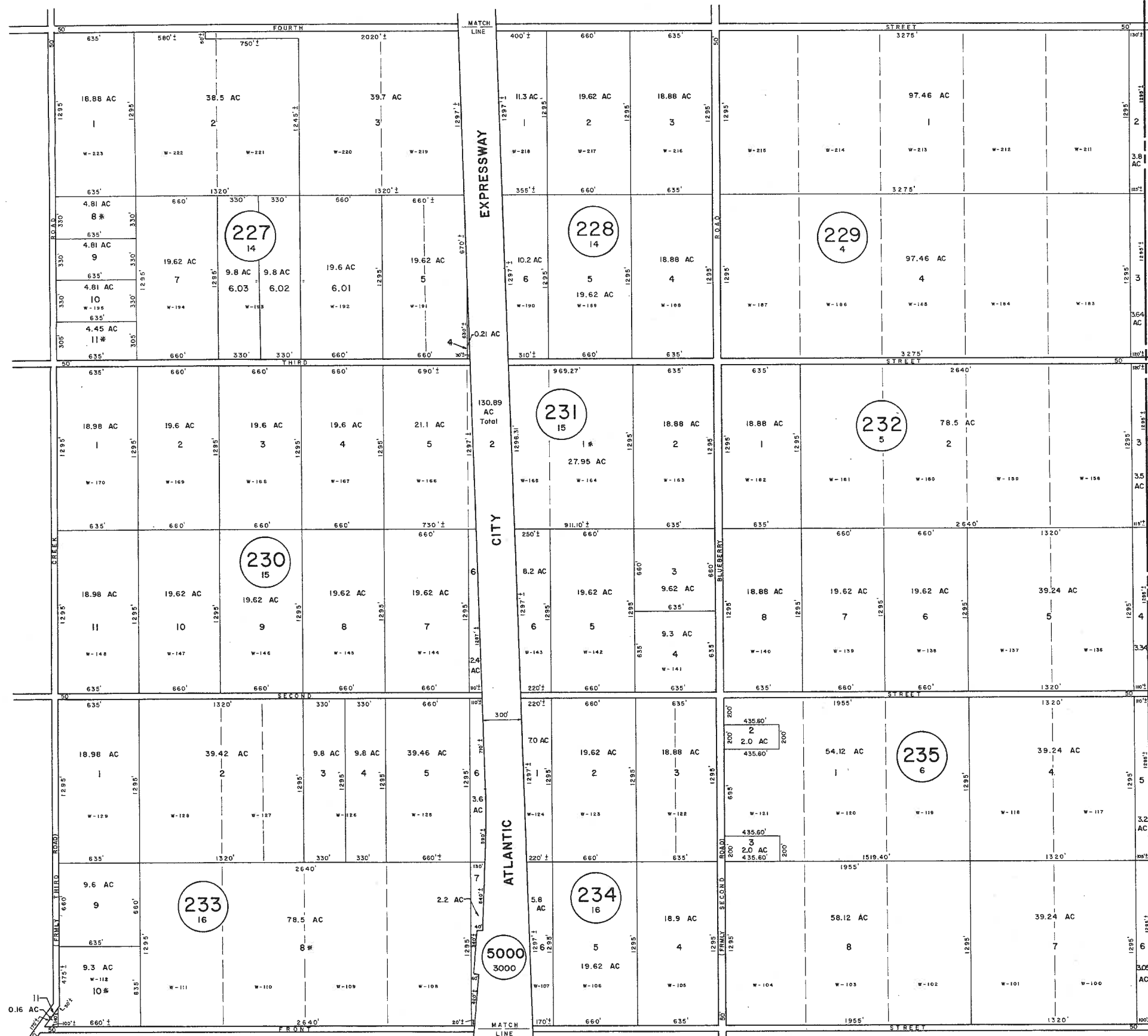


See Adjoining Sheet 4

See Adjoining Sheet 8



MULLICA TOWNSHIP  
ATLANTIC COUNTY

NEW JERSEY DEPARTMENT OF THE TREASURY  
DIVISION OF TAXATION  
LOCAL PROPERTY AND PUBLIC UTILITY BRANCH  
APPROVED AS A TAX MAP PURSUANT TO THE  
PROVISIONS OF CHAPTER 175, LAWS OF 1913, ETC.  
FOR THE DIRECTOR, DIVISION OF TAXATION  
BY *[Signature]* P.E. & L.S.  
LIC. #15434 CHIEF, ENGINEERING SECTION  
DATE JAN 22 1986 SERIAL NO. 654

NEW JERSEY DEPARTMENT OF THE TREASURY  
DIVISION OF TAXATION  
LOCAL PROPERTY AND PUBLIC UTILITY BRANCH  
APPROVED AS A TAX MAP PURSUANT TO THE  
PROVISIONS OF CHAPTER 175, LAWS OF 1913, ETC.  
FOR THE DIRECTOR, DIVISION OF TAXATION  
BY *[Signature]* P.E. & L.S.  
DATE MAR 1 6 1978 SERIAL NO. 578-1

**TAX MAP**  
**TOWNSHIP OF HAMILTON**  
ATLANTIC COUNTY, NEW JERSEY  
SCALE: 1" = 400' DATE: JUNE 1, 1977

RONALD J. PRICE  
PLEASANTVILLE, N.J.  
N.J. LICENSE NO. 12951

\* EXEMPT TOWNSHIP OF HAMILTON  
LETTER "W" INDICATES NUMBER ON MAP OF WEYMOUTH FARM & AGRICULTURAL CO.

See Adjoining Sheet 11

REV. BY CHURCHILL - FEB. 2008  
REV. BY ALEXANDER M. CHURCHILL ASSOC. - JAN. '95

WPHA 5-7-84  
REVISIONS