

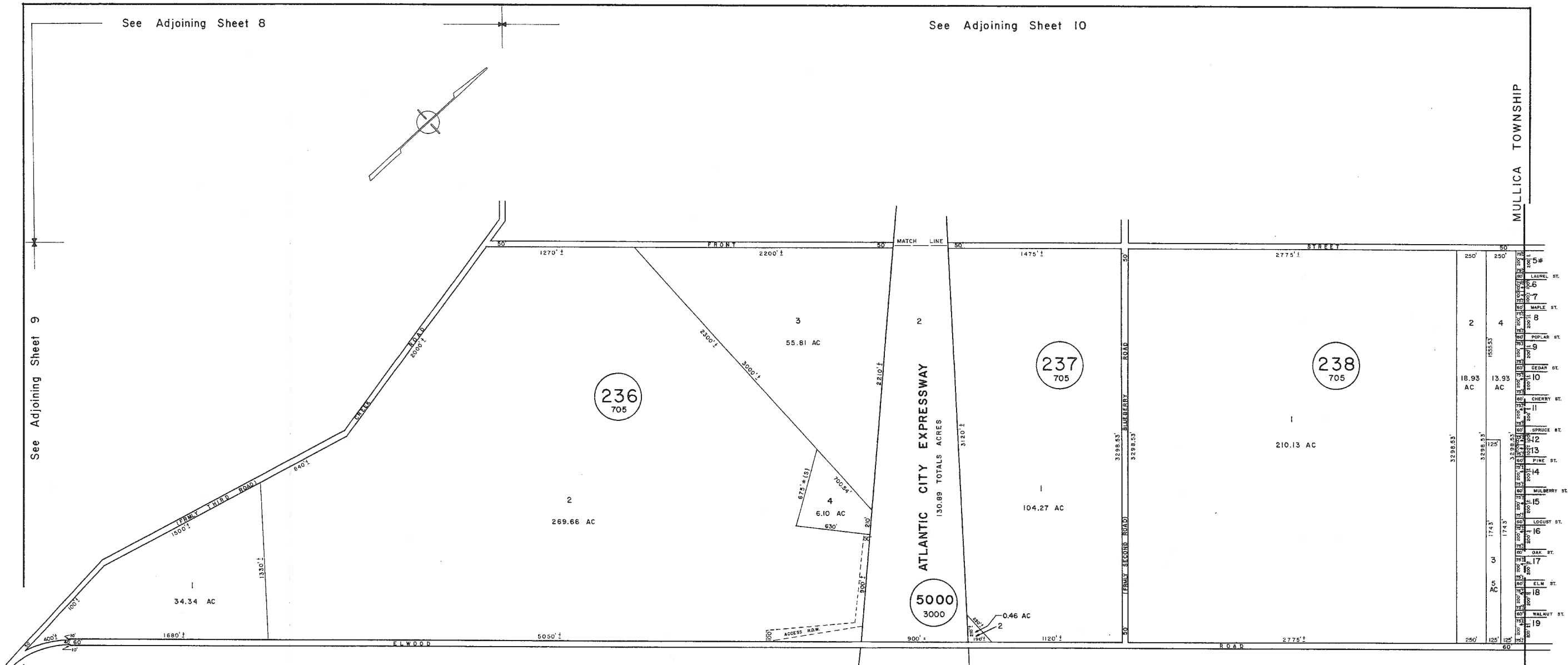
See Adjoining Sheet 8

See Adjoining Sheet 10

See Adjoining Sheet 9

MULLICA TOWNSHIP

ATLANTIC COUNTY



See Adjoining Sheet 12

See Adjoining Sheet 13

REV. BY ALEXANDER M. CHURCHILL ASSOC. - JAN. '95

NEW JERSEY DEPARTMENT OF THE TREASURY  
DIVISION OF TAXATION  
LOCAL PROPERTY AND PUBLIC UTILITY BRANCH  
APPROVED AS A TAX MAP PURSUANT TO THE  
PROVISIONS OF ART. 12, LAWS OF 1913, ETC.  
FOR THE DIRECTOR, DIVISION OF TAXATION

BY: *[Signature]* P.E. & L.S.  
LIC. #25434 CHIEF, ENGINEERING SECTION  
JAN 16 1997 SERIAL NO. 578

\* EXEMPT TOWNSHIP OF HAMILTON

NEW JERSEY DEPARTMENT OF THE TREASURY  
DIVISION OF TAXATION  
LOCAL PROPERTY AND PUBLIC UTILITY BRANCH  
APPROVED AS A TAX MAP PURSUANT TO THE  
PROVISIONS OF ART. 12, LAWS OF 1913, ETC.  
FOR THE DIRECTOR, DIVISION OF TAXATION

BY: *[Signature]* P.E. & L.S.  
LIC. #25434 CHIEF, ENGINEERING SECTION  
JAN 22 1996 SERIAL NO. 654

**TAX MAP**  
**TOWNSHIP OF HAMILTON**  
ATLANTIC COUNTY, NEW JERSEY  
SCALE: 1" = 400' DATE: JUNE 1, 1977

RONALD J. PRICE  
PLEASANTVILLE, N.J.  
N.J. LICENSE NO. 18901