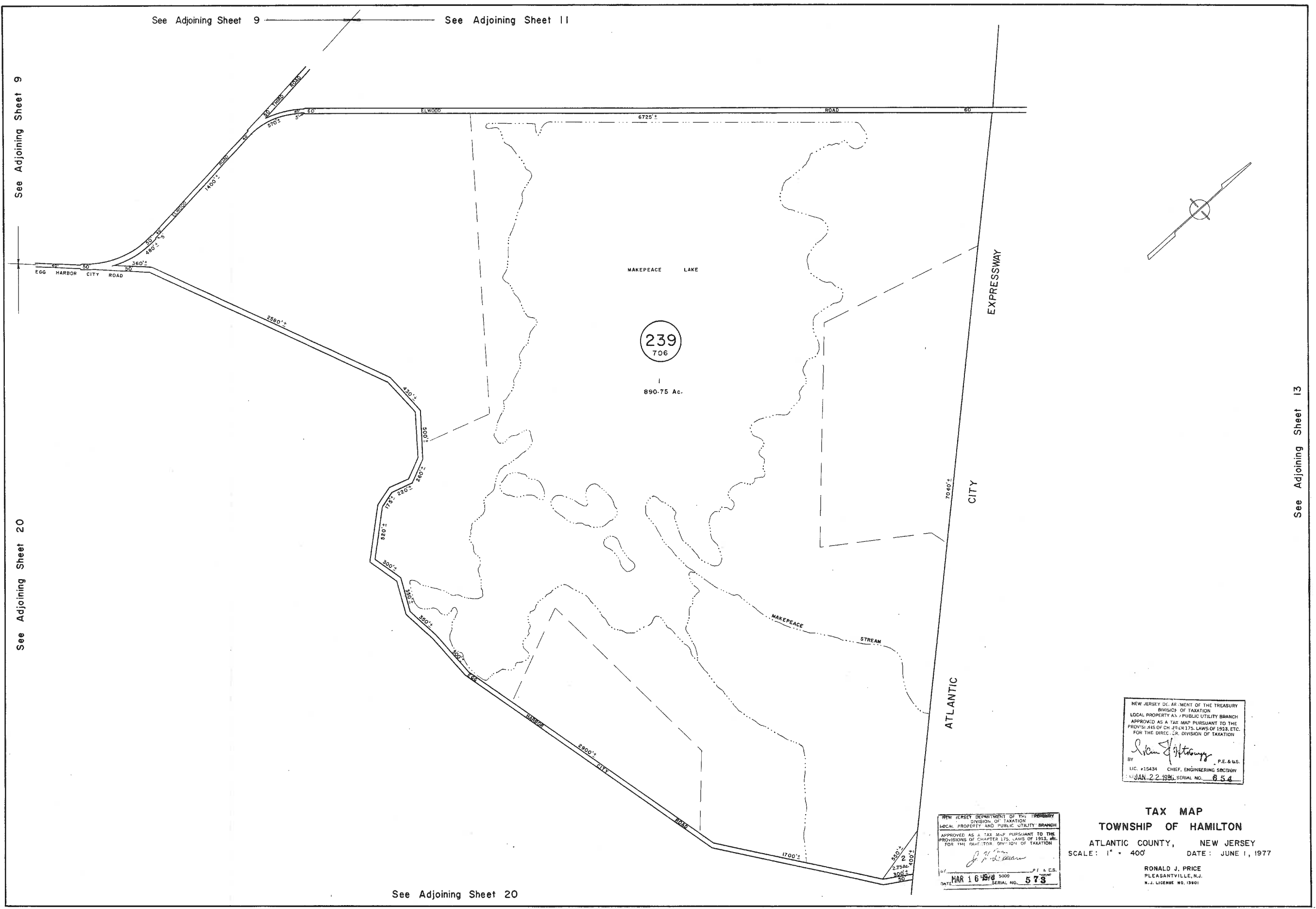


See Adjoining Sheet 9      See Adjoining Sheet 11

See Adjoining Sheet 9

See Adjoining Sheet 20



See Adjoining Sheet 20

NEW JERSEY DEPARTMENT OF THE TREASURY  
 DIVISION OF TAXATION  
 LOCAL PROPERTY AND PUBLIC UTILITY BRANCH  
 APPROVED AS A TAX MAP PURSUANT TO THE  
 PROVISIONS OF CHAPTER 175, LAWS OF 1953, ETC.  
 FOR THE DIRECTOR, DIVISION OF TAXATION

*William J. Heston*  
 BY: P.E. & U.S.  
 LIC. #15434 CHIEF, ENGINEERING SECTION  
 JAN 22 1978 SERIAL NO. 854

NEW JERSEY DEPARTMENT OF THE TREASURY  
 DIVISION OF TAXATION  
 LOCAL PROPERTY AND PUBLIC UTILITY BRANCH  
 APPROVED AS A TAX MAP PURSUANT TO THE  
 PROVISIONS OF CHAPTER 175, LAWS OF 1953, ETC.  
 FOR THE DIRECTOR, DIVISION OF TAXATION

*J. Price*  
 BY: P.E. & U.S.  
 MAR 16 1978 SERIAL NO. 573

**TAX MAP**  
**TOWNSHIP OF HAMILTON**  
 ATLANTIC COUNTY, NEW JERSEY  
 SCALE: 1" = 400'      DATE: JUNE 1, 1977

RONALD J. PRICE  
 PLEASANTVILLE, N.J.  
 N.J. LICENSE NO. 13901

See Adjoining Sheet 13