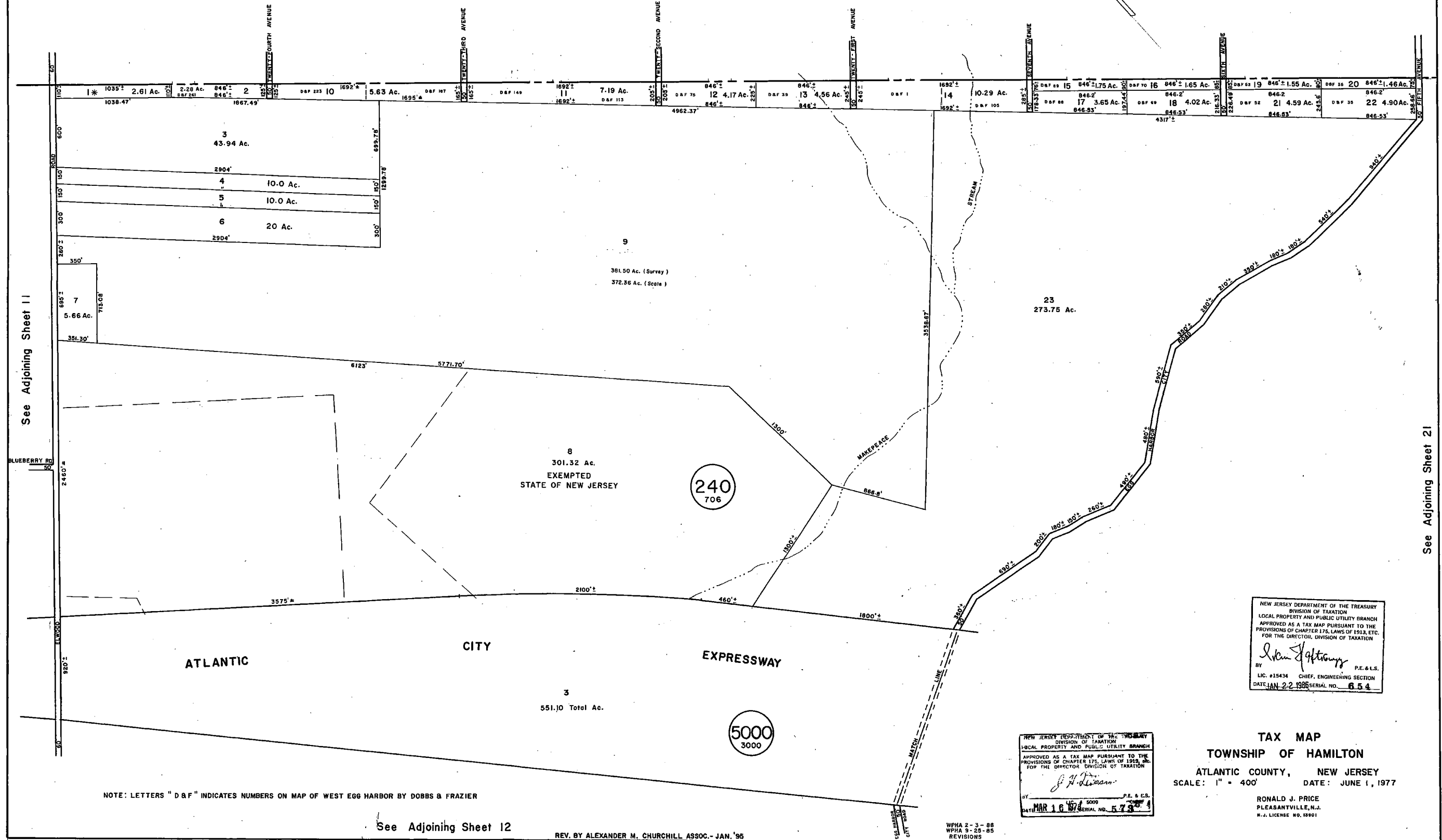


| REVISIONS |   |           |
|-----------|---|-----------|
| DATE      | NAME                                      | NO.       |
| 3-2017    | DIXON ASSOCIATES/<br>THOMAS A. FREMEREANT | LS. 37604 |

ATLANTIC COUNTY  
MULLICA TOWNSHIP



See Adjoining Sheet 11

See Adjoining Sheet 21

NOTE: LETTERS "D & F" INDICATES NUMBERS ON MAP OF WEST EGG HARBOR BY DOBBS & FRAZIER

See Adjoining Sheet 12

REV. BY ALEXANDER M. CHURCHILL ASSOC. - JAN. '95

NEW JERSEY DEPARTMENT OF THE TREASURY  
DIVISION OF TAXATION  
LOCAL PROPERTY AND PUBLIC UTILITY BRANCH  
APPROVED AS A TAX MAP PURSUANT TO THE  
PROVISIONS OF CHAPTER 175, LAWS OF 1913, ETC.  
FOR THE DIRECTOR, DIVISION OF TAXATION  
*J. H. Williams*  
P.E. & C.S.  
DATE: MAR 16 1977 SERIAL NO. 579

NEW JERSEY DEPARTMENT OF THE TREASURY  
DIVISION OF TAXATION  
LOCAL PROPERTY AND PUBLIC UTILITY BRANCH  
APPROVED AS A TAX MAP PURSUANT TO THE  
PROVISIONS OF CHAPTER 175, LAWS OF 1913, ETC.  
FOR THE DIRECTOR, DIVISION OF TAXATION  
*John J. Gattuso*  
P.E. & L.S.  
LIC. #15434 CHIEF, ENGINEERING SECTION  
DATE: JAN 22 1985 SERIAL NO. 654

TAX MAP  
TOWNSHIP OF HAMILTON  
ATLANTIC COUNTY, NEW JERSEY  
SCALE: 1" = 400' DATE: JUNE 1, 1977

RONALD J. PRICE  
PLEASANTVILLE, N.J.  
N.J. LICENSE NO. 12901

WPHA 2-3-88  
WPHA 5-25-85  
REVISIONS