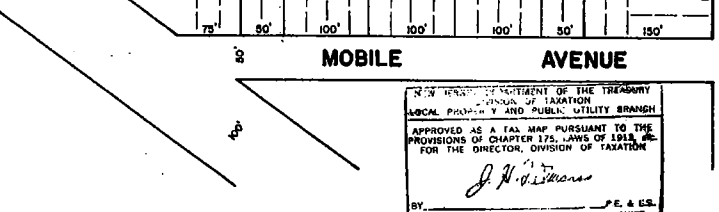
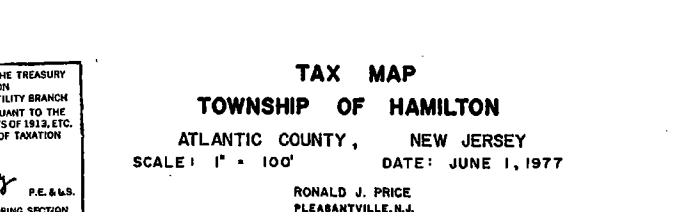
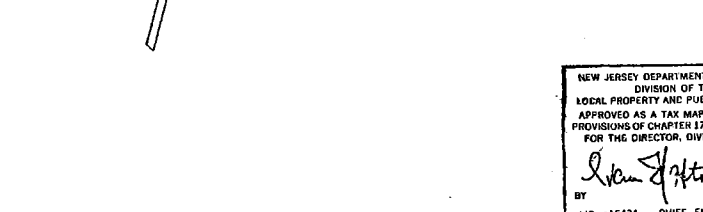
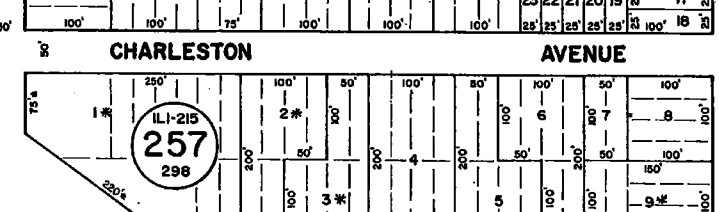
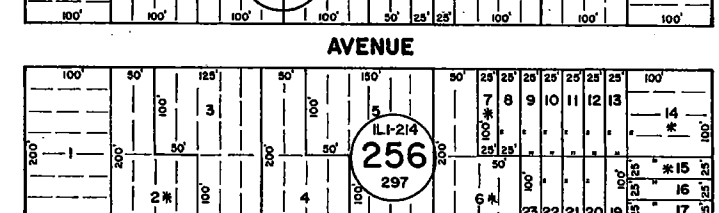
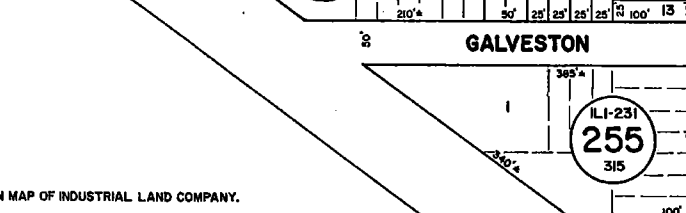
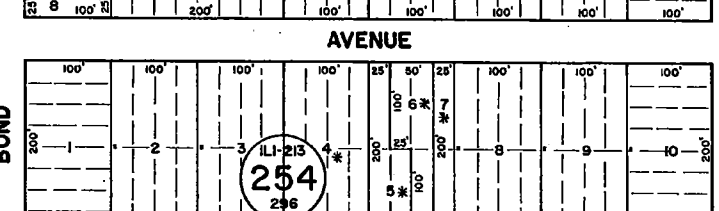
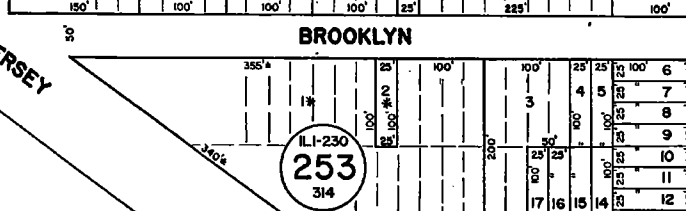
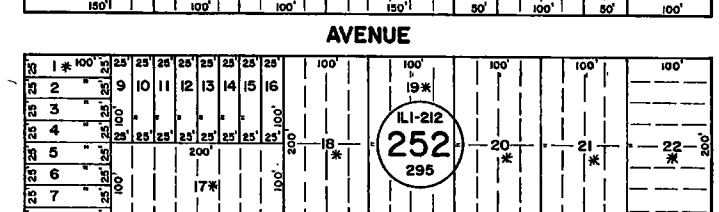
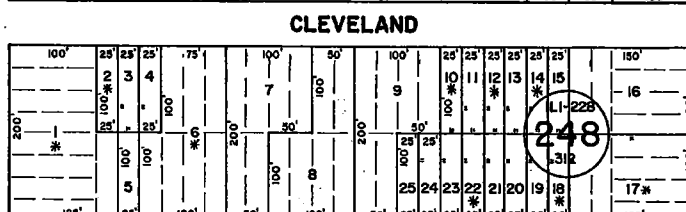
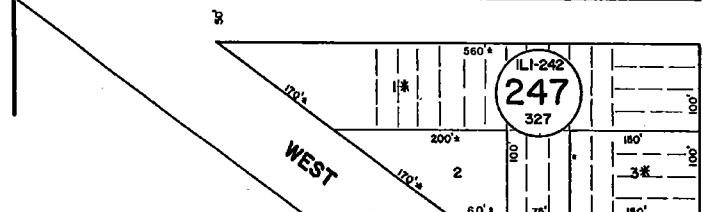
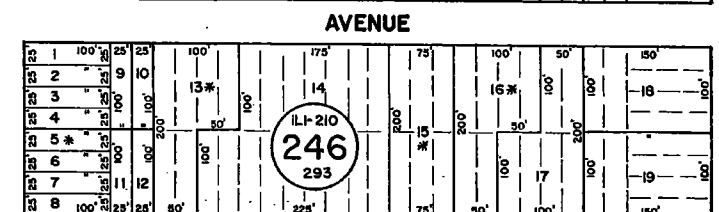
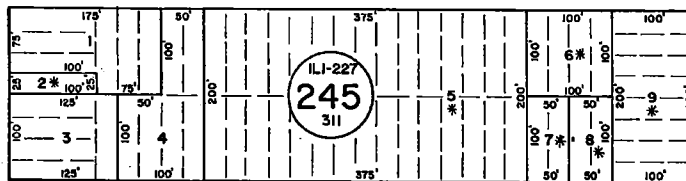
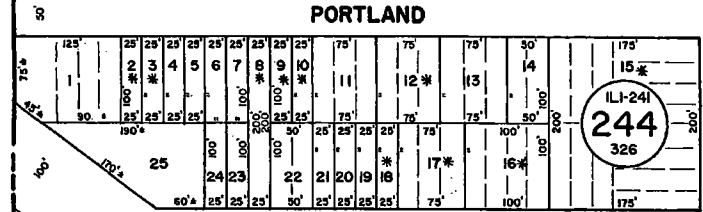
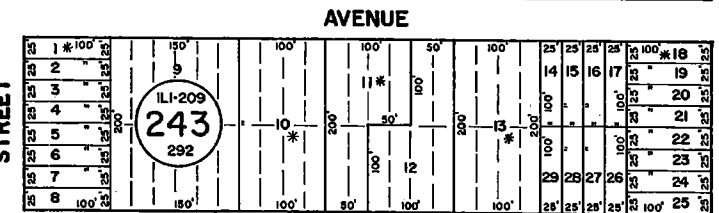
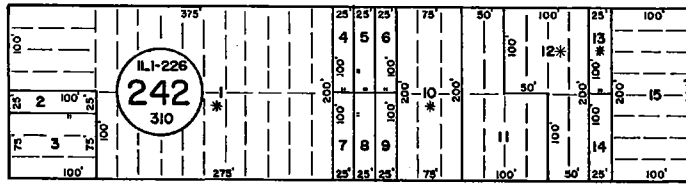
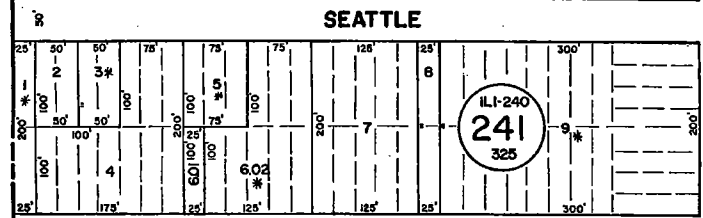


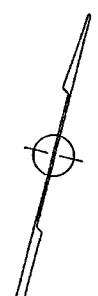
ATLANTIC COUNTY
BUENA VISTA TOWNSHIP

See Adjoining Sheet 5.05

REVISIONS		
DATE	NAME	NO.
3-2017	DIXON ASSOCIATES/ THOMAS A. FROENKEL	L.S. 37604



NOTE: LETTERS "IL" INDICATE NUMBERS ON MAP OF INDUSTRIAL LAND COMPANY.
* EXEMPT TOWNSHIP OF HAMILTON



NEW JERSEY DEPARTMENT OF THE TREASURY
DIVISION OF TAXATION
LOCAL PROPERTY AND PUBLIC UTILITY BRANCH
APPROVED AS A TAX MAP PURSUANT TO THE
PROVISIONS OF CHAPTER 175, LAWS OF 1913, ETC.
FOR THE DIRECTOR, DIVISION OF TAXATION
John J. Anthony
BY: P.E. & L.S.
LIC. #15424 CHIEF, ENGINEERING SECTION
DATE: JAN 22 1988 SERIAL NO. 654

TAX MAP
TOWNSHIP OF HAMILTON
ATLANTIC COUNTY, NEW JERSEY
SCALE: 1" = 100' DATE: JUNE 1, 1977

RONALD J. PRICE
PLEASANTVILLE, N.J.
N.J. LICENSE NO. 18901

NEW JERSEY DEPARTMENT OF THE TREASURY
DIVISION OF TAXATION
LOCAL PROPERTY AND PUBLIC UTILITY BRANCH
APPROVED AS A TAX MAP PURSUANT TO THE
PROVISIONS OF CHAPTER 175, LAWS OF 1913, ETC.
FOR THE DIRECTOR, DIVISION OF TAXATION
John J. Anthony
BY: P.E. & L.S.
LIC. # 5009 SERIAL NO. 578
DATE: MAR 16 1988

REV. BY R&V - 1-8-2013
REV. BY CHORCHILL - FEB. 2008

See Adjoining Sheet 14.05

See Adjoining Sheet 14.02