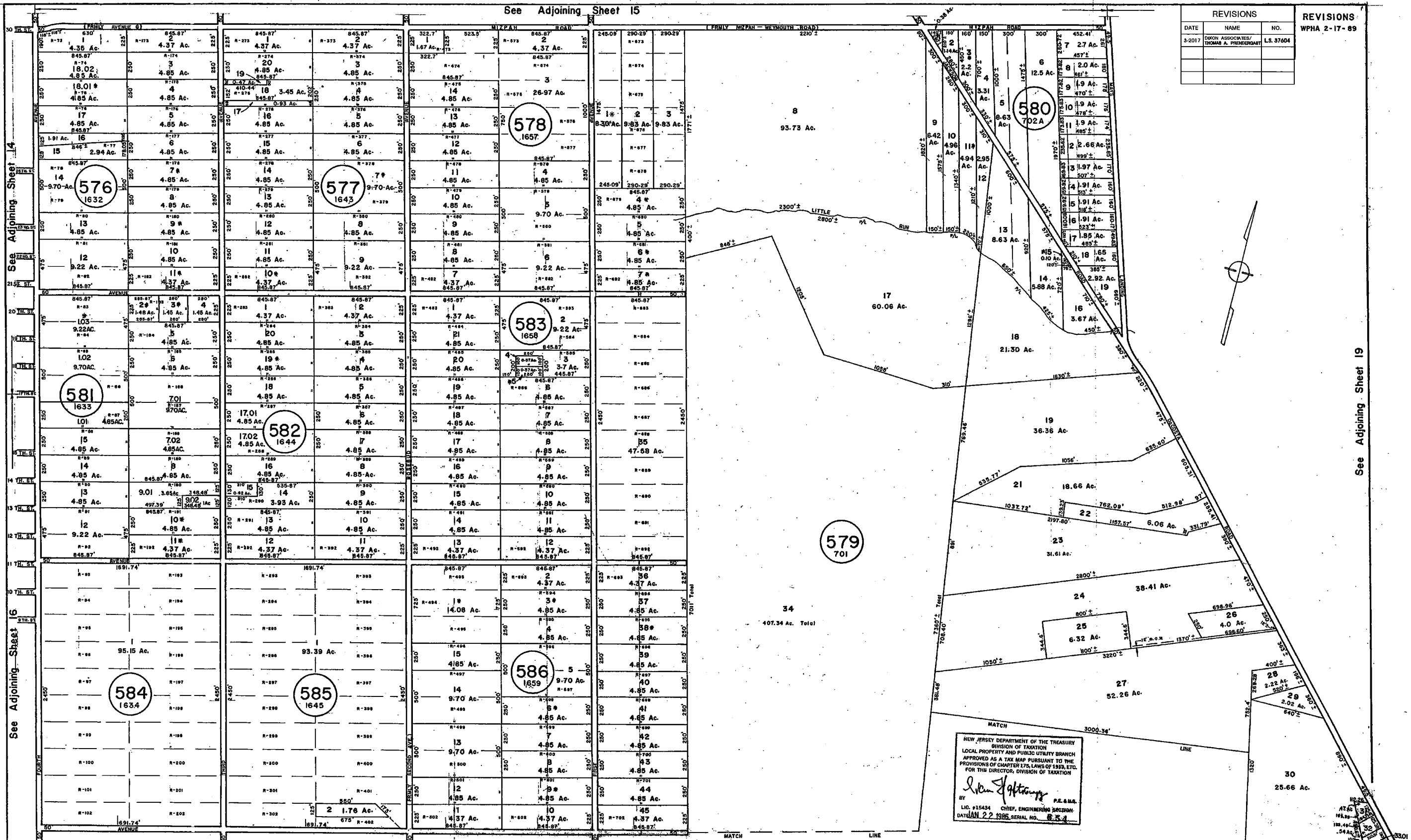


REVISIONS		
DATE	NAME	NO.
3-2017	ORION ASSOCIATES/ THOMAS A. PRESBERGIAN	LS. 37604

REVISIONS: WPHA 2-17-89



NEW JERSEY DEPARTMENT OF THE TREASURY
DIVISION OF TAXATION
LOCAL PROPERTY AND PUBLIC UTILITY BRANCH
APPROVED AS A TAX MAP PURSUANT TO THE
PROVISIONS OF CHAPTER 175, LAWS OF 1982, ETC.
FOR THE DIRECTOR, DIVISION OF TAXATION

J. H. Williams
BY: LIO. #15434 P.E. & S.E.
CHIEF, ENGINEERING SECTION
DATE: JAN 22 1986, SERIAL NO. 6, 5, 3

NEW JERSEY DEPARTMENT OF THE TREASURY
DIVISION OF TAXATION
LOCAL PROPERTY AND PUBLIC UTILITY BRANCH
APPROVED AS A TAX MAP PURSUANT TO THE
PROVISIONS OF CHAPTER 175, LAWS OF 1982, ETC.
FOR THE DIRECTOR, DIVISION OF TAXATION

J. H. Williams
BY: LIO. #15434 P.E. & S.E.
CHIEF, ENGINEERING SECTION
DATE: MAR 16 1986, SERIAL NO. 6, 5, 3

TAX MAP
TOWNSHIP OF HAMILTON
ATLANTIC COUNTY, NEW JERSEY
SCALE: 1" = 400' DATE: JUNE 1, 1977

RONALD J. PRICE
PLEASANTVILLE, N.J.
N.J. LICENSE NO. 18901

REV. BY ALEXANDER M. CHURCHILL ASSOC. - JAN '95, MAR '95 REV. BY CHURCHILL - FEB. 2008

NOTE: LETTER "R" INDICATES NUMBER ON MAP OF RICHLAND GARDEN FARM EXTENSION
* EXEMPT TOWNSHIP OF HAMILTON

See Adjoining Sheet 23

WPHA 4-25-85 REVISIONS

See Adjoining Sheet 18