

| REVISIONS | | |
|-----------|---|------------|
| DATE | L.S. NAME | LIC. No. |
| 2-4-98 | MARTIN F TIRELLA | 27477 |
| 10-24-08 | C.F. REMINGTON | 23924 |
| 3-2017 | DIXON ASSOCIATES/ THOMAS A. FREDERSONI | L.S. 37604 |

See Adjoining Sheet 12

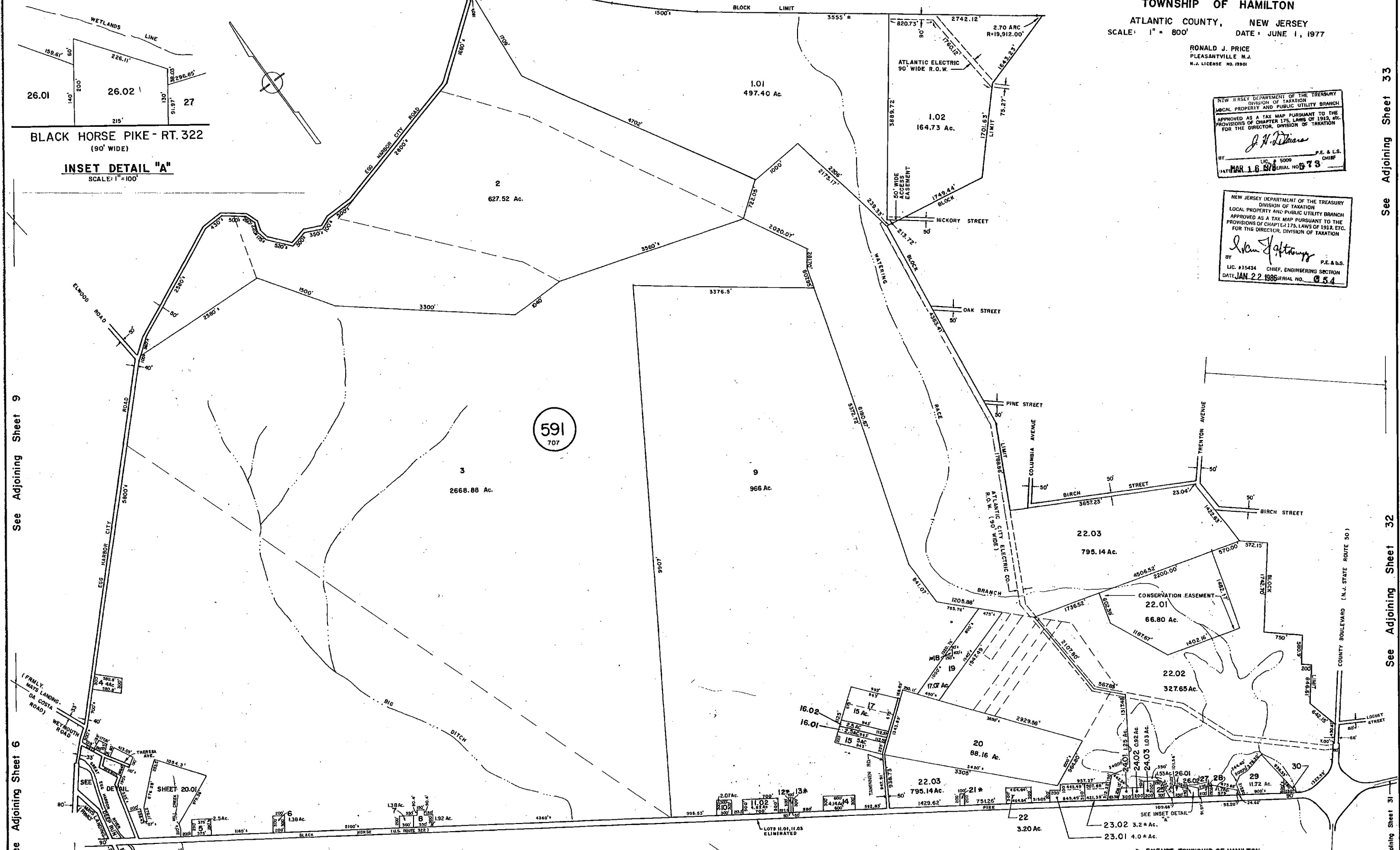
See Adjoining Sheet 21

TAX MAP
TOWNSHIP OF HAMILTON
 ATLANTIC COUNTY, NEW JERSEY
 SCALE: 1" = 800' DATE: JUNE 1, 1977

RONALD J. PRICE
 PLEASANTVILLE N.J.
 N.J. LICENSE NO. 19901

NEW JERSEY DEPARTMENT OF THE TREASURY
 DIVISION OF TAXATION
 LOCAL PROPERTY AND PUBLIC UTILITY BRANCH
 APPROVED AS A TAX MAP PURSUANT TO THE
 PROVISIONS OF CHAPTER 175, LAWS OF 1912, ETC.
 FOR THE DIRECTOR, DIVISION OF TAXATION
J. H. DiStasio
 BY: LIC. # 5009 P.E. & L.S. CHIEF
 DATE: MAR 16 1978 SERIAL NO. 73

NEW JERSEY DEPARTMENT OF THE TREASURY
 DIVISION OF TAXATION
 LOCAL PROPERTY AND PUBLIC UTILITY BRANCH
 APPROVED AS A TAX MAP PURSUANT TO THE
 PROVISIONS OF CHAPTER 175, LAWS OF 1912, ETC.
 FOR THE DIRECTOR, DIVISION OF TAXATION
John J. Gattuso
 BY: LIC. #15434 P.E. & L.S. CHIEF, ENGINEERING SECTION
 DATE: JAN 22 1986 SERIAL NO. 054



BLACK HORSE PIKE - RT. 322
 (90' WIDE)
INSET DETAIL "A"
 SCALE: 1" = 100'

See Adjoining Sheet 9

See Adjoining Sheet 6

See Adjoining Sheet 19

REV. BY CHURCHILL-FEB. 2008
 REV. BY CHURCHILL-FEB. 2001
 REV. BY ALEXANDER M. CHURCHILL ASSOC.-JAN. '95, MAR. '96

WPHA 6-10-85
 WPHA 11-9-84
 REVISIONS

See Adjoining Sheet 29

* EXEMPT TOWNSHIP OF HAMILTON

See Adjoining Sheet 33

See Adjoining Sheet 32

See Adjoining Sheet 31