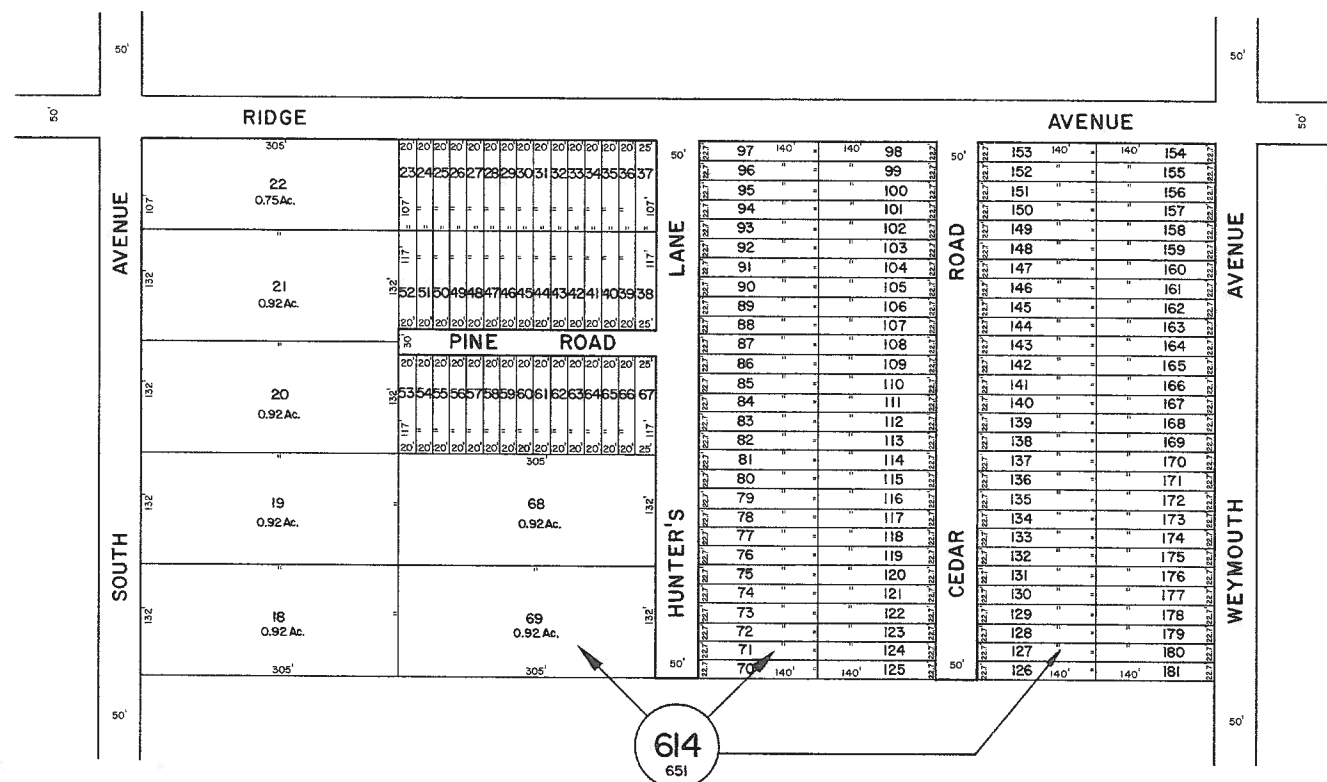
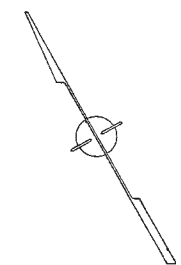


See Adjoining Sheet 22

See Adjoining Sheet 22

See Adjoining Sheet 23



NEW JERSEY DEPARTMENT OF THE TREASURY
 DIVISION OF TAXATION
 LOCAL PROP. RT. AND PUBLIC UTILITY BRANCH
 APPROVED AS A TAX MAP PURSUANT TO THE
 PROVISIONS OF CHAPTER 175, LAWS OF 1913, ETC.
 FOR THE DIVISION OF TAXATION

John J. Heston
 BY: *John J. Heston* P.E. & S.
 LIC. 15344, CHIEF ENGINEERING SECTION
 DATE: JAN 22, 1986 SERIAL NO. 654

NEW JERSEY DEPARTMENT OF THE TREASURY
 DIVISION OF TAXATION
 LOCAL PROP. RT. AND PUBLIC UTILITY BRANCH
 APPROVED AS A TAX MAP PURSUANT TO THE
 PROVISIONS OF CHAPTER 175, LAWS OF 1913, ETC.
 FOR THE DIVISION OF TAXATION

Ronald J. Price
 BY: *Ronald J. Price* P.E. & S.
 LIC. 5009, CHIEF ENGINEERING SECTION
 DATE: MAR 15, 1986 SERIAL NO. 573

TAX MAP
TOWNSHIP OF HAMILTON
 ATLANTIC COUNTY, NEW JERSEY
 SCALE: 1" = 100' DATE: JUNE 1, 1977

RONALD J. PRICE
 PLEASANTVILLE, N.J.
 N.J. LICENSE NO. 19901

See Adjoining Sheet 22