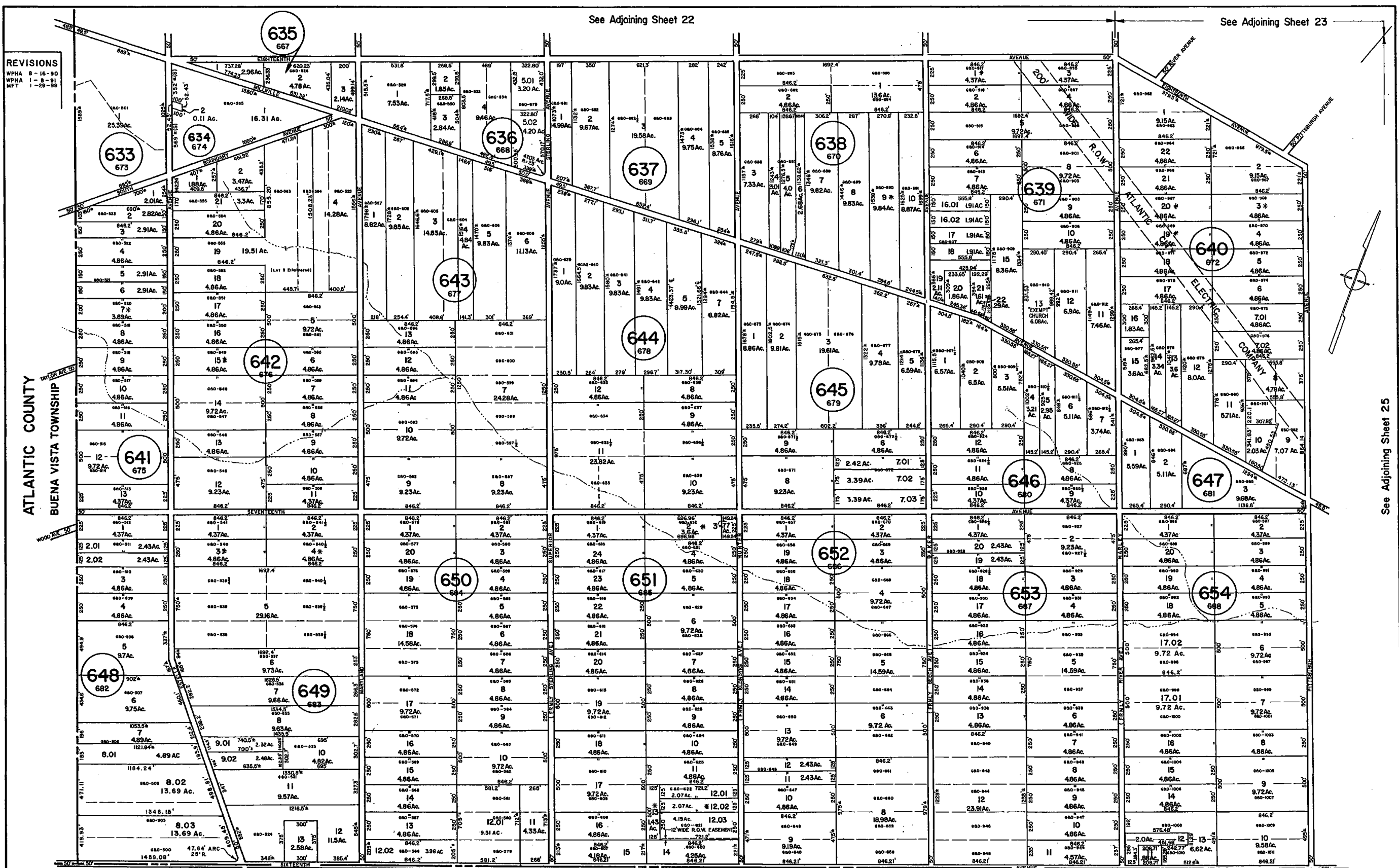


See Adjoining Sheet 22

See Adjoining Sheet 23

**REVISIONS**  
 WPHA 8-16-90  
 WPHA 1-8-91  
 MFT 1-29-99



See Adjoining Sheet 25

NOTE: LETTERS "680" INDICATE NUMBERS ON MAP OF RICHLAND COLONY BY GILBERT & O'CALLAGHAN  
 \* EXEMPT TOWNSHIP OF HAMILTON

NEW JERSEY DEPARTMENT OF THE TREASURY  
 DIVISION OF TAXATION  
 LOCAL PROPERTY AND PUBLIC UTILITY BRANCH  
 APPROVED AS A TAX MAP PURSUANT TO THE  
 PROVISIONS OF CHAPTER 175, LAWS OF 1913, ETC.  
 FOR THE DIRECTOR, DIVISION OF TAXATION  
*[Signature]*  
 BY: P.E. & L.S.  
 LIC. #16434 CHIEF ENGINEERING SECTION  
 DATE: JAN. 22, 1998 SERIAL NO. 654

WEYMOUTH TOWNSHIP  
 ATLANTIC COUNTY  
 REV. BY REMINGTON & VERNICK ENGINEERS - 1-8-2013  
 REVISED BY CHURCHILL - MAR. 2007, FEB. 2008  
 REVISED BY CHURCHILL - FEB. 1999, OCT. 2001, AUG. 2005  
 REV. BY ALEXANDER M. CHURCHILL ASSOC. - JAN. '98

NEW JERSEY DEPARTMENT OF THE TREASURY  
 DIVISION OF TAXATION  
 LOCAL PROPERTY AND PUBLIC UTILITY BRANCH  
 APPROVED AS A TAX MAP PURSUANT TO THE  
 PROVISIONS OF CHAPTER 175, LAWS OF 1913, ETC.  
 FOR THE DIRECTOR, DIVISION OF TAXATION  
*[Signature]*  
 BY: P.E. & L.S.  
 LIC. # 5009  
 DATE: MAR. 18, 2009 SERIAL NO. 573

TAX MAP  
 TOWNSHIP OF HAMILTON  
 ATLANTIC COUNTY, NEW JERSEY  
 SCALE: 1" = 400'  
 DATE: JUNE 1, 1977

RONALD J. PRICE  
 PLEASANTVILLE, N.J.  
 N.J. LICENSE NO. 13901

3-2017 DIXON ASSOCIATES/  
 THOMAS A. FREYBERGER  
 L.S. 37404

REVISED BY REMINGTON & VERNICK ENGINEERS - 7-1-2015 - BLK 636, L 13 & 14 - DEED OF CONSOLIDATION