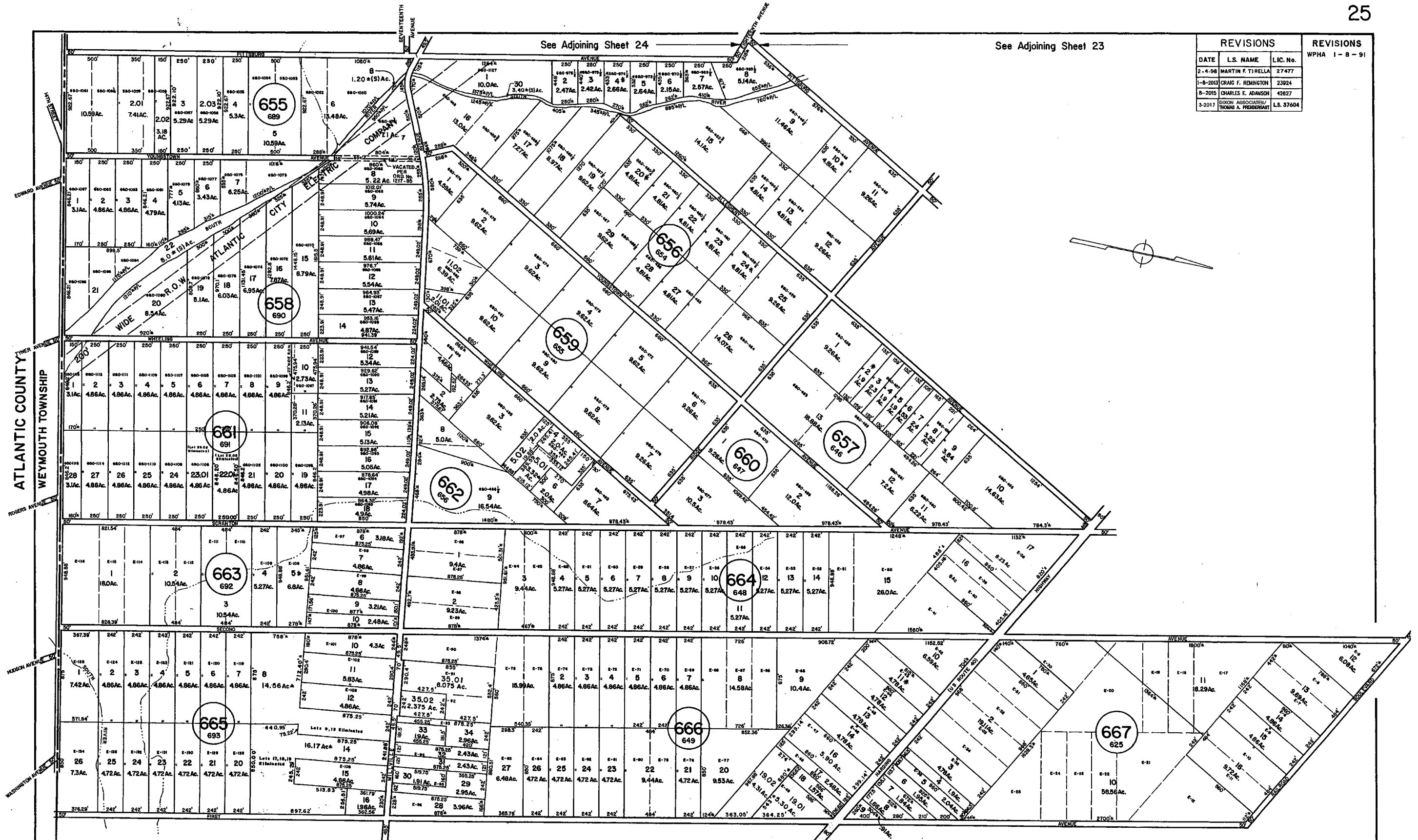


See Adjoining Sheet 23

See Adjoining Sheet 24

REVISIONS			REVISIONS		
DATE	L.S. NAME	LIC. No.	WPHA 1-8-91		
2-4-98	MARTIN F. TIRELLA	27477			
1-8-2013	CRAIG F. REMINGTON	23924			
8-2015	CHARLES E. ADAMSON	42827			
3-2017	DIXON ASSOCIATES/ THOMAS A. FREDERIGHI	LS. 37604			



NOTE: LETTERS "G&O" INDICATE NUMBERS ON MAP OF RICHLAND COLONY BY GILBERT & O'CALLAGHAN  
 LETTER "E" INDICATES NUMBERS ON MAP OF EDWINA BY A.M. BONISLOWSKI  
 \* EXEMPT TOWNSHIP OF HAMILTON

NEW JERSEY DEPARTMENT OF THE TREASURY  
 DIVISION OF TAXATION  
 LOCAL PROPERTY AND PUBLIC UTILITY BRANCH  
 APPROVED AS A TAX MAP PURSUANT TO THE  
 PROVISIONS OF CHAPTER 175, LAWS OF 1913, ETC.  
 FOR THE DIRECTOR, DIVISION OF TAXATION  
*Richard J. Price*  
 BY: \_\_\_\_\_ P.E. & L.S.  
 LIC. #15434 CHIEF, ENGINEERING SECTION  
 DATE: JAN 22 1996 SERIAL NO. 654

NEW JERSEY DEPARTMENT OF THE TREASURY  
 DIVISION OF TAXATION  
 LOCAL PROPERTY AND PUBLIC UTILITY BRANCH  
 APPROVED AS A TAX MAP PURSUANT TO THE  
 PROVISIONS OF CHAPTER 175, LAWS OF 1913, ETC.  
 FOR THE DIRECTOR, DIVISION OF TAXATION  
*Richard J. Price*  
 BY: \_\_\_\_\_ P.E. & L.S.  
 LIC. #15434 CHIEF, ENGINEERING SECTION  
 DATE: MAR 16 2009 SERIAL NO. 579

TAX MAP  
 TOWNSHIP OF HAMILTON  
 ATLANTIC COUNTY, NEW JERSEY  
 SCALE: 1" = 400'  
 DATE: JUNE 1, 1977

RONALD J. PRICE  
 PLEASANTVILLE, N.J.  
 N.J. LICENSE NO. 15401

REVISED BY CHURCHILL - OCT. 2002, MAR. 2004, AUG. 2004, JAN. 2007, FEB. 2008

See Adjoining Sheet 26

WPHA 9-9-88  
 WPHA 12-2-86  
 REVISIONS

See Adjoining Sheet 18