

REVISIONS
WPHA 12-17-96

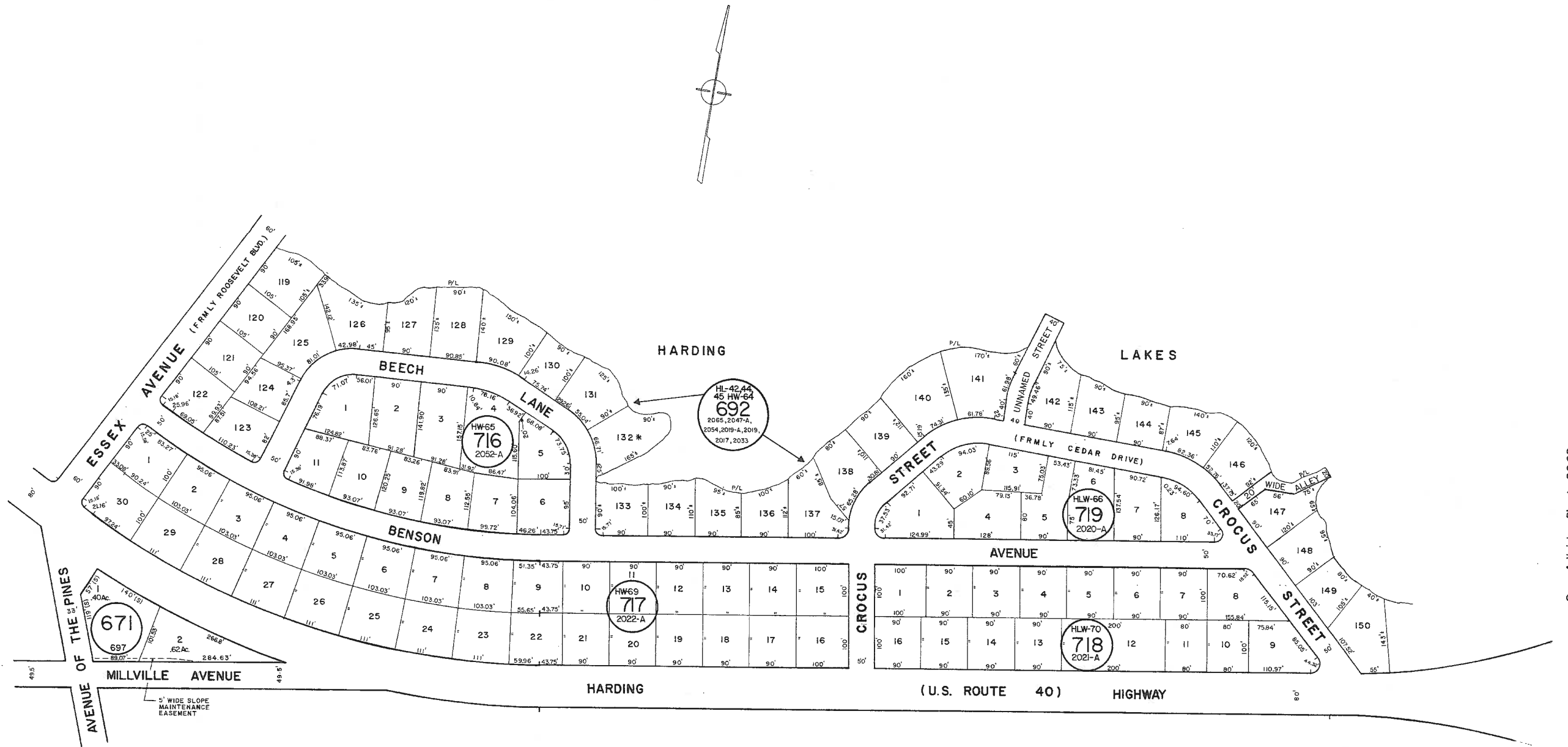
See Adjoining Sheet 26.03

See Adjoining Sheet 26.02

See Adjoining Sheet 26.03

See Adjoining Sheet 26

See Adjoining Sheet 26.02



NOTE: LETTERS "HL" INDICATE NUMBERS ON MAP OF HARDING LAKES.
 LETTERS "HLW" INDICATE NUMBERS ON MAP OF HARDING LAKES WEST.
 LETTERS "HW" INDICATE NUMBERS ON MAP OF HAMILTON WOODS.
 * EXEMPT TOWNSHIP OF HAMILTON

REV. BY CHURCHILL - FEB. 2008
 REV. BY ALEXANDER M. CHURCHILL ASSOC. - JAN. '95

See Adjoining Sheet 26

NEW JERSEY DEPARTMENT OF THE TREASURY
 DIVISION OF TAXATION
 LOCAL PROPERTY AND PUBLIC UTILITY BRANCH
 APPROVED AS A TAX MAP PURSUANT TO THE
 PROVISIONS OF CHAPTER 175, LAWS OF 1983, ETC.
 FOR THE DIRECTOR, DIVISION OF TAXATION
[Signature]
 BY: P.E. & L.S.
 LIC. #15434 CHIEF, ENGINEERING SECTION
 DATE: JAN 22 1986 SERIAL NO. 654

NEW JERSEY DEPARTMENT OF THE TREASURY
 DIVISION OF TAXATION
 LOCAL PROPERTY AND PUBLIC UTILITY BRANCH
 APPROVED AS A TAX MAP PURSUANT TO THE
 PROVISIONS OF CHAPTER 175, LAWS OF 1983, ETC.
 FOR THE DIRECTOR, DIVISION OF TAXATION
[Signature]
 BY: P.E. & L.S.
 LIC. # 5009
 DATE: MAR 16 1987 SERIAL NO. 573

TAX MAP
 TOWNSHIP OF HAMILTON
 ATLANTIC COUNTY, NEW JERSEY
 SCALE: 1" = 100' DATE: JUNE 1, 1977

RONALD J. PRICE
 PLEASANTVILLE, N.J.
 N.J. LICENSE NO. 15901