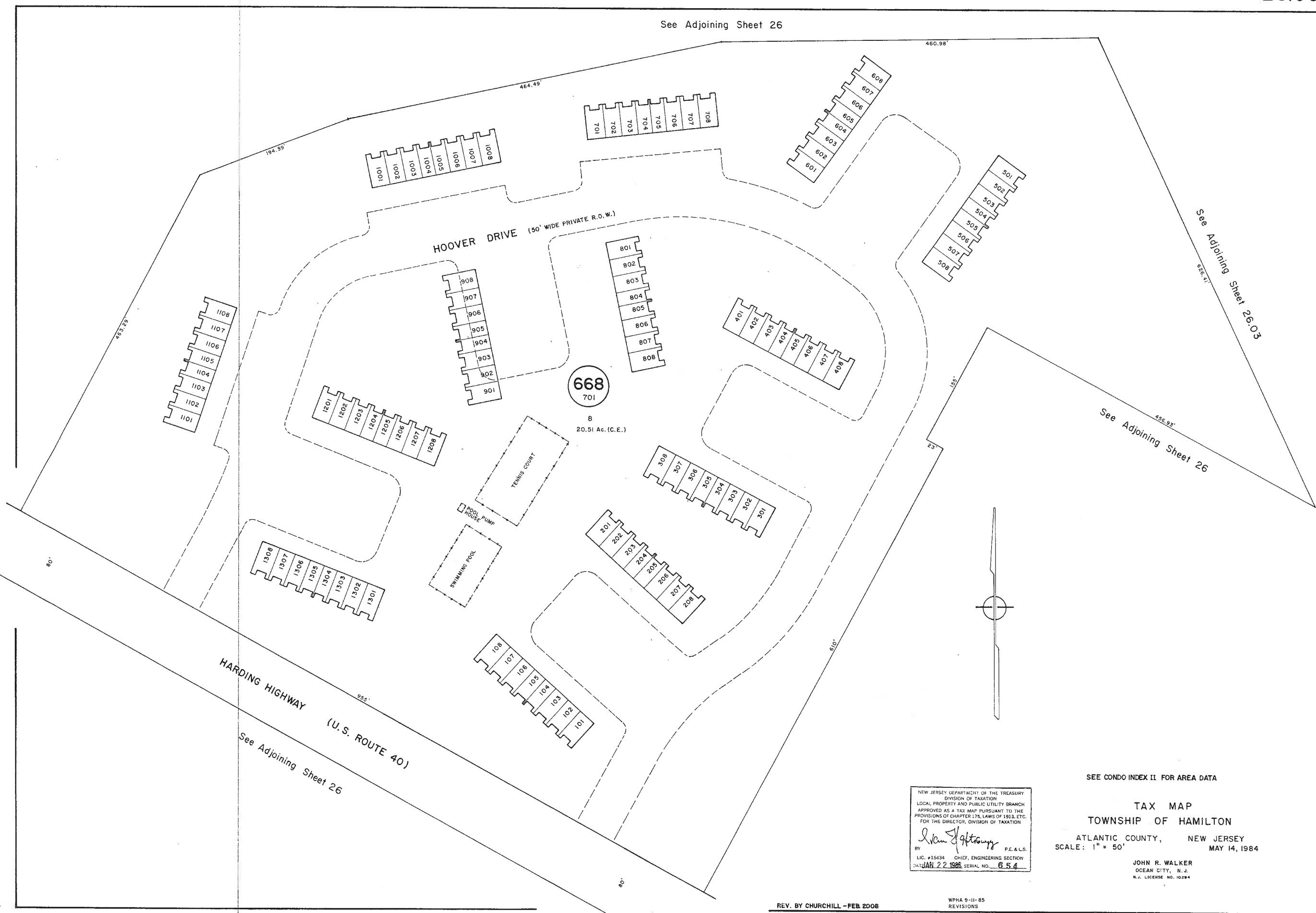


See Adjoining Sheet 26



See Adjoining Sheet 26.03

See Adjoining Sheet 26

See Adjoining Sheet 26

NEW JERSEY DEPARTMENT OF THE TREASURY
 DIVISION OF TAXATION
 LOCAL PROPERTY AND PUBLIC UTILITY BRANCH
 APPROVED AS A TAX MAP PURSUANT TO THE
 PROVISIONS OF CHAPTER 176, LAWS OF 1913, ETC.
 FOR THE DIRECTOR, DIVISION OF TAXATION

John R. Walker
 BY P.E. & L.S.

LIC. #15434 CHIEF, ENGINEERING SECTION
 DATE JAN. 22 1986 SERIAL NO. 654

SEE CONDO INDEX II FOR AREA DATA

TAX MAP
TOWNSHIP OF HAMILTON
 ATLANTIC COUNTY, NEW JERSEY
 SCALE: 1" = 50' MAY 14, 1984

JOHN R. WALKER
 OCEAN CITY, N.J.
 N.J. LICENSE NO. 10294

REV. BY CHURCHILL - FEB 2008

WPHA 9-II-85 REVISIONS