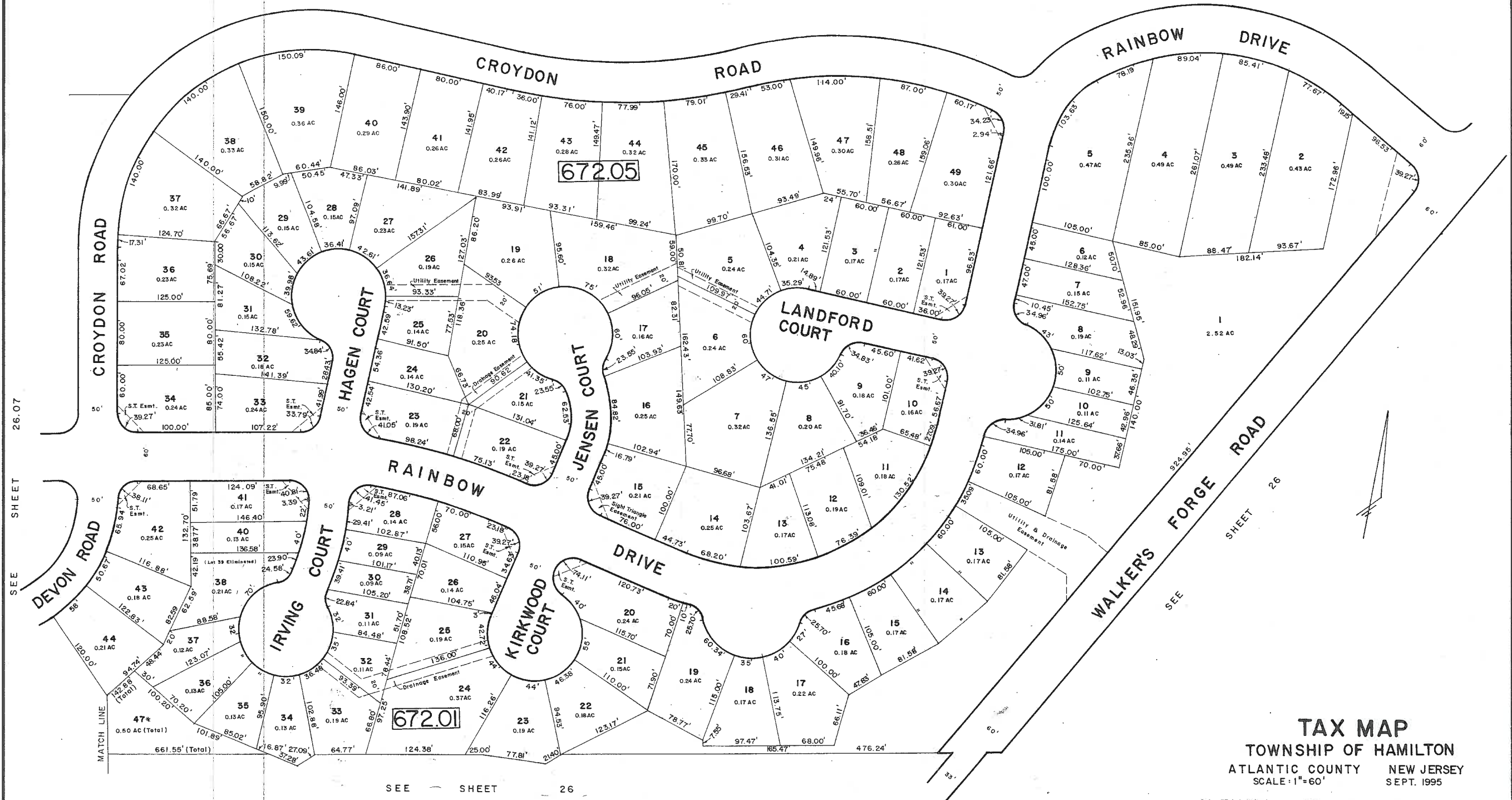


SEE SHEET 26



SEE SHEET 26.07

SEE SHEET 26

"MISTY PINES ESTATES"

* EXEMPT TOWNSHIP OF HAMILTON

TAX MAP
 TOWNSHIP OF HAMILTON
 ATLANTIC COUNTY NEW JERSEY
 SCALE: 1"=60' SEPT. 1995
 ALEXANDER M. CHURCHILL, P.E. & L.S.
 344 Route 73 - Berlin, New Jersey

REVISED BY CHURCHILL - APRIL 2005, FEB. 2008