

See Adjoining Sheet 30.02

TAX MAP
TOWNSHIP OF HAMILTON

ATLANTIC COUNTY, NEW JERSEY
SCALE: 1" = 100' DATE: JUNE 1, 1977

RONALD J. PRICE
PLEASANTVILLE, N.J.
N.J. LICENSE NO. 19901

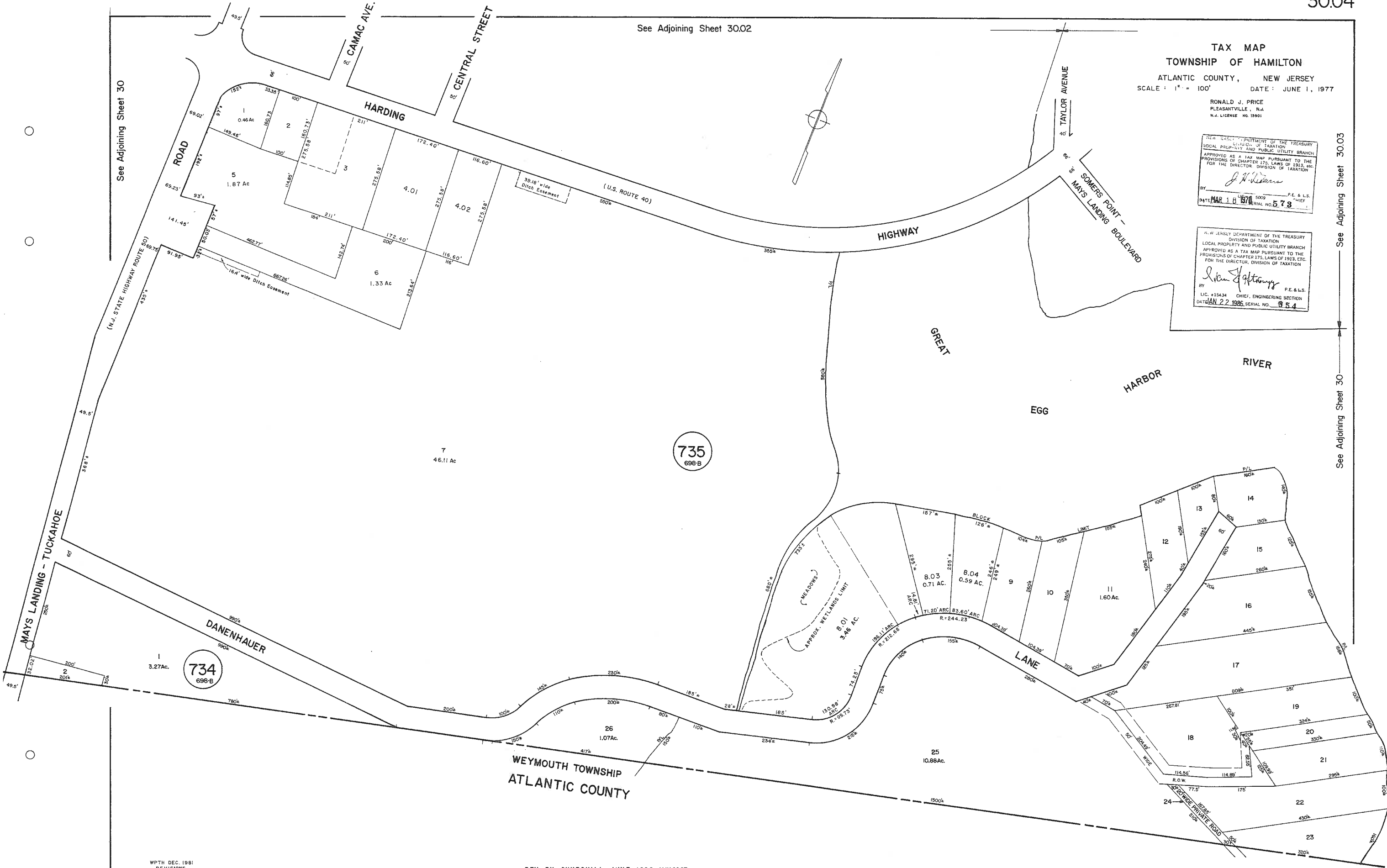
NEW JERSEY DEPARTMENT OF THE TREASURY
DIVISION OF TAXATION
SOCIAL PROPERTY AND PUBLIC UTILITY BRANCH
APPROVED AS A TAX MAP PURSUANT TO THE
PROVISIONS OF CHAPTER 175, LAWS OF 1985, ETC.
FOR THE DIRECTOR, DIVISION OF TAXATION
J. Williams
BY: *J. Williams* P.E. & L.S.
DATE: MAR 10 1978 SERIAL NO. 578

NEW JERSEY DEPARTMENT OF THE TREASURY
DIVISION OF TAXATION
LOCAL PROPERTY AND PUBLIC UTILITY BRANCH
APPROVED AS A TAX MAP PURSUANT TO THE
PROVISIONS OF CHAPTER 175, LAWS OF 1985, ETC.
FOR THE DIRECTOR, DIVISION OF TAXATION
Alan J. Anthony
BY: *Alan J. Anthony* P.E. & L.S.
LIC. #15434 CHIEF, ENGINEERING SECTION
DATE: JAN 22 1986 SERIAL NO. 954

See Adjoining Sheet 30

See Adjoining Sheet 30.03

See Adjoining Sheet 30



WPTH DEC. 1981
REVISIONS

REV. BY CHURCHILL - JUNE 1999, MAY 2007