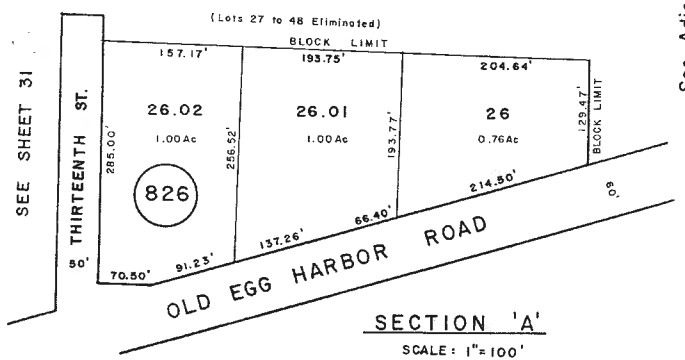
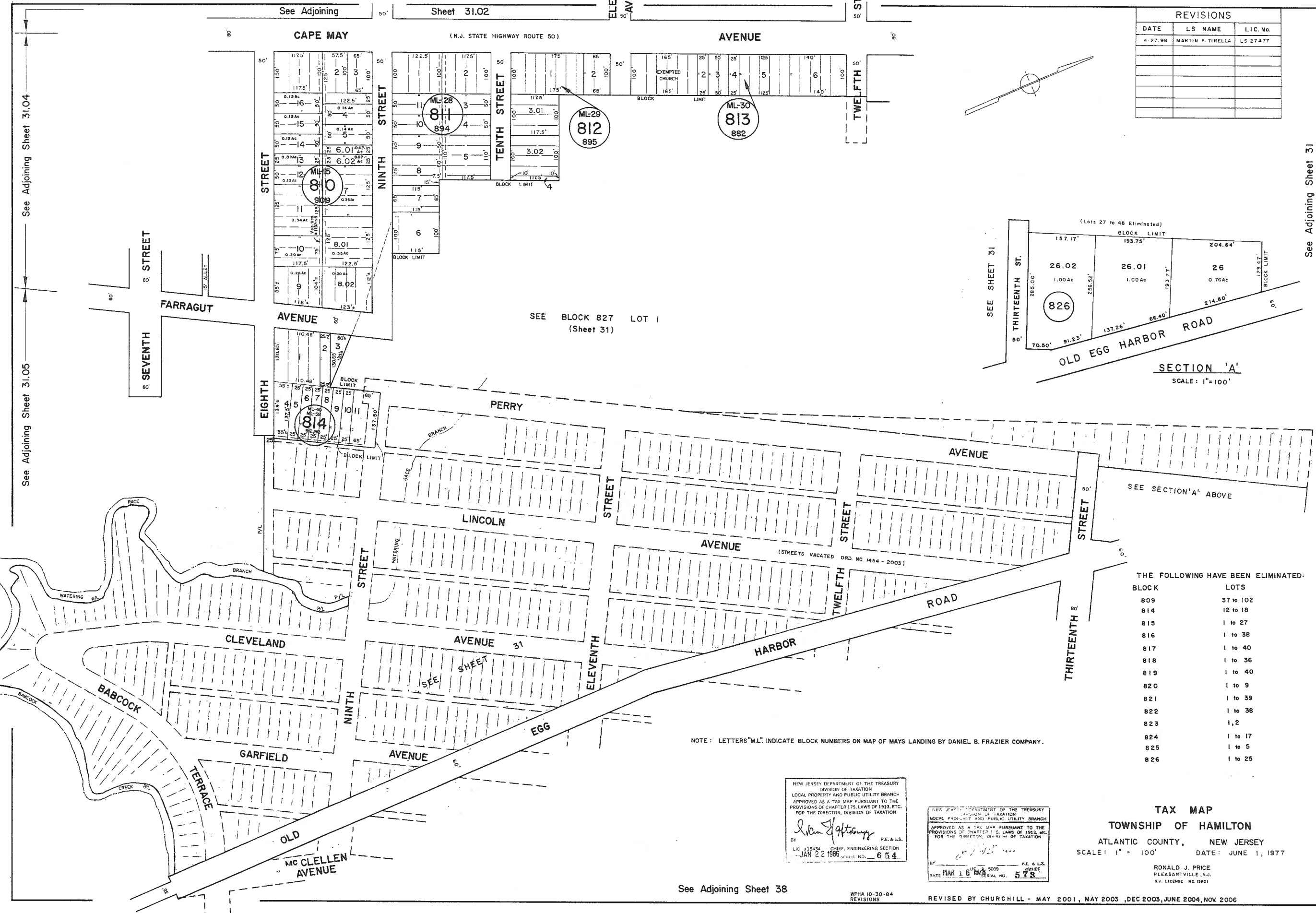
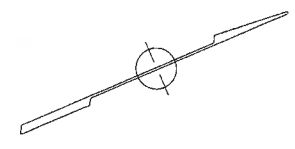


REVISIONS		
DATE	LS NAME	LIC. No.
4-27-98	MARTIN F. TIRELLA	LS 27477



THE FOLLOWING HAVE BEEN ELIMINATED:

BLOCK	LOTS
809	37 to 102
814	12 to 18
815	1 to 27
816	1 to 38
817	1 to 40
818	1 to 36
819	1 to 40
820	1 to 9
821	1 to 39
822	1 to 38
823	1, 2
824	1 to 17
825	1 to 5
826	1 to 25

NOTE: LETTERS "ML" INDICATE BLOCK NUMBERS ON MAP OF MAYS LANDING BY DANIEL B. FRAZIER COMPANY.

NEW JERSEY DEPARTMENT OF THE TREASURY
 DIVISION OF TAXATION
 LOCAL PROPERTY AND PUBLIC UTILITY BRANCH
 APPROVED AS A TAX MAP PURSUANT TO THE
 PROVISIONS OF CHAPTER 175, LAWS OF 1913, ETC.
 FOR THE DIRECTOR, DIVISION OF TAXATION

John J. Anthony P.E. & L.S.
 LIC. #15434 CHIEF, ENGINEERING SECTION
 - JAN 22 1999 - SERIAL NO. 654

NEW JERSEY DEPARTMENT OF THE TREASURY
 DIVISION OF TAXATION
 LOCAL PROPERTY AND PUBLIC UTILITY BRANCH
 APPROVED AS A TAX MAP PURSUANT TO THE
 PROVISIONS OF CHAPTER 175, LAWS OF 1913, ETC.
 FOR THE DIRECTOR, DIVISION OF TAXATION

BY *Ronald J. Price* P.E. & L.S.
 CHIEF
 DATE MAR 16 2009 SERIAL NO. 573

TAX MAP
TOWNSHIP OF HAMILTON
 ATLANTIC COUNTY, NEW JERSEY
 SCALE: 1" = 100' DATE: JUNE 1, 1977

RONALD J. PRICE
 PLEASANTVILLE, N.J.
 N.J. LICENSE NO. 15901

See Adjoining Sheet 38

WPHA 10-30-84
 REVISIONS

REVISED BY CHURCHILL - MAY 2001, MAY 2003, DEC 2003, JUNE 2004, NOV. 2006