

See Adjoining Sheet 21.01

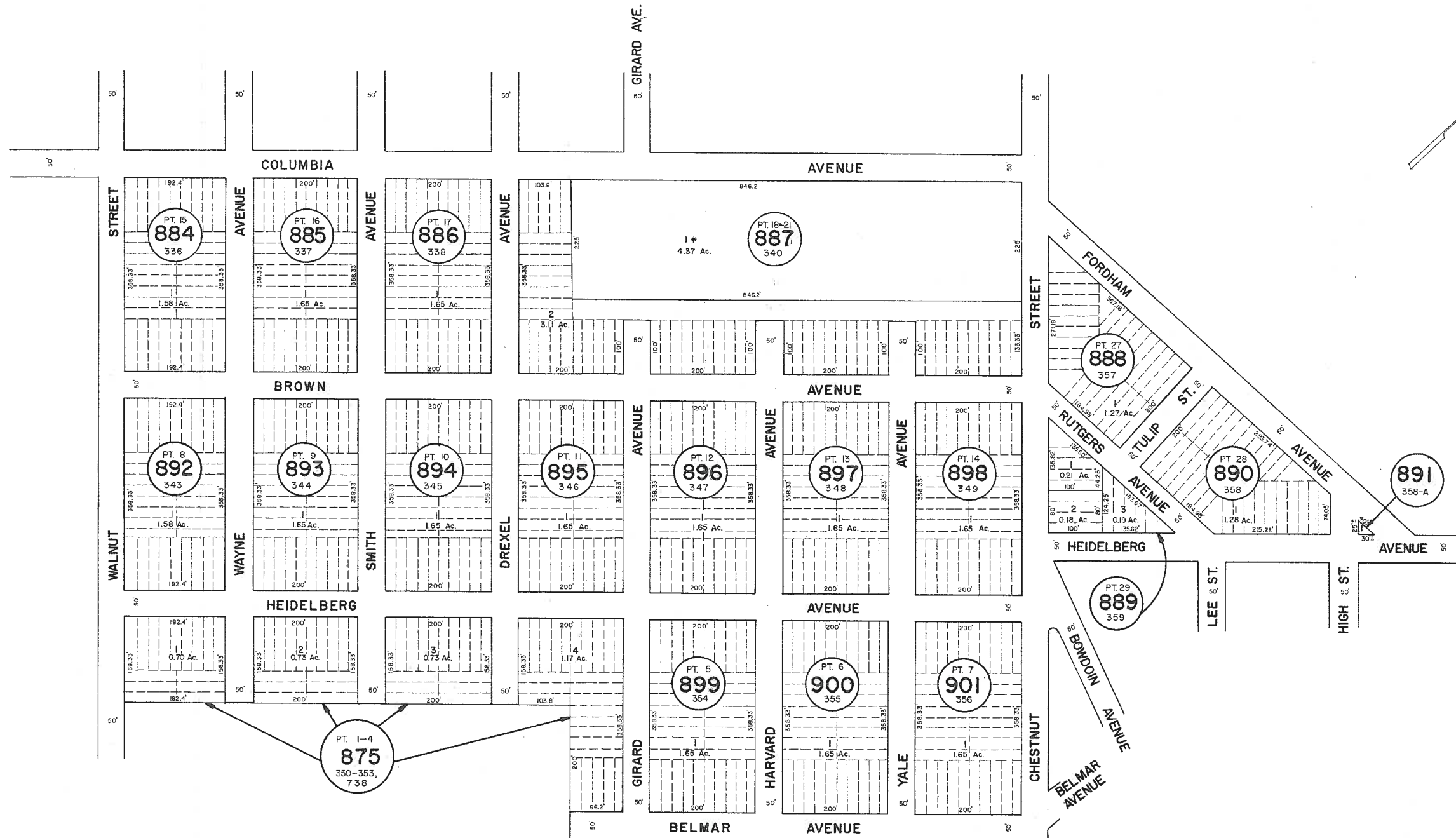
See Adjoining Sheet 21

See Adjoining Sheet 21.01

See Adjoining Sheet 34

See Adjoining Sheet 21

See Adjoining Sheet 34.02



NOTE: LETTERS PT. INDICATE NUMBER ON MAP OF PINEWOOD TERRACE.  
 \* EXEMPT TOWNSHIP OF HAMILTON

NEW JERSEY DEPARTMENT OF THE TREASURY  
 DIVISION OF TAXATION  
 LOCAL PROPERTY AND PUBLIC UTILITY BRANCH  
 APPROVED AS A TAX MAP PURSUANT TO THE  
 PROVISIONS OF CHAPTER 173, LAWS OF 1913, ETC.  
 FOR THE DIRECTOR, DIVISION OF TAXATION

*John J. Gaffney*  
 BY: LIC. #15434 P.E. & L.S.  
 JAN 22 1978 CHIEF, ENGINEERING SECTION

NEW JERSEY DEPARTMENT OF THE TREASURY  
 DIVISION OF TAXATION  
 LOCAL PROPERTY AND PUBLIC UTILITY BRANCH  
 APPROVED AS A TAX MAP PURSUANT TO THE  
 PROVISIONS OF CHAPTER 173, LAWS OF 1913, ETC.  
 FOR THE DIRECTOR, DIVISION OF TAXATION

BY: LIC. #5009 P.E. & L.S.  
 MAR 16 1978 CHIEF, ENGINEERING SECTION

TAX MAP  
 TOWNSHIP OF HAMILTON  
 ATLANTIC COUNTY, NEW JERSEY  
 SCALE: 1" = 100'  
 DATE: JUNE 1, 1977

RONALD J. PRICE  
 PLEASANTVILLE, N.J.  
 N.J. LICENSE NO. 13801

See Adjoining Sheet 34

REV. BY CHURCHILL - FEB. 2008