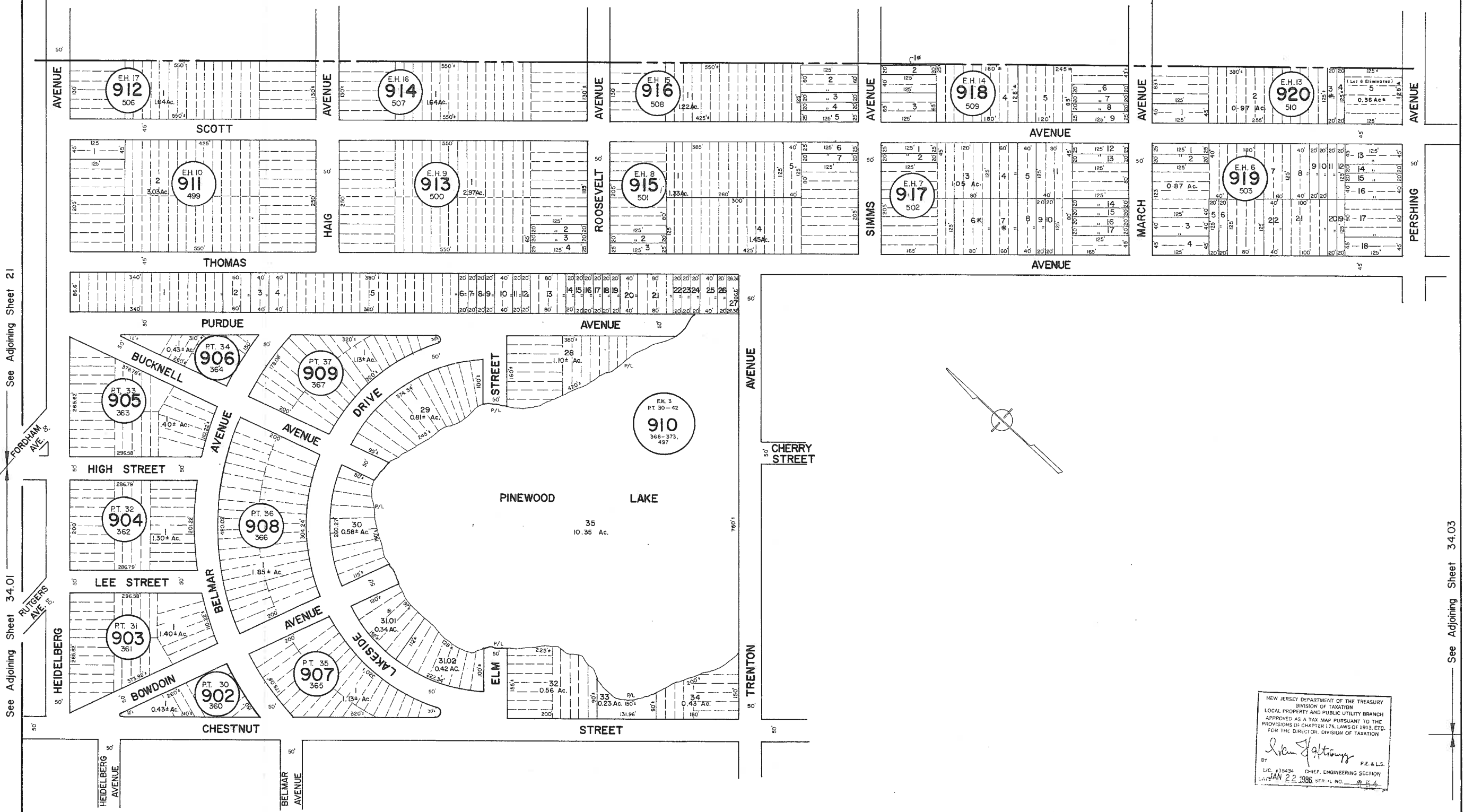


ATLANTIC

COUNTY

GALLOWAY

TOWNSHIP



See Adjoining Sheet 21
 See Adjoining Sheet 34.01
 See Adjoining Sheet 34.03

NOTE: LETTERS PT. INDICATE NUMBER ON MAP OF PINWOOD TERRACE.
 LETTERS E.H. INDICATE NUMBER ON MAP OF EGG HARBOR CITY MANOR.
 * EXEMPT TOWNSHIP OF HAMILTON

See Adjoining Sheet 34.01 See Adjoining Sheet 34

REVISED BY CHURCHILL - OCT. 2000, FEB 2008

NEW JERSEY DEPARTMENT OF THE TREASURY
 DIVISION OF TAXATION
 LOCAL PROPERTY AND PUBLIC UTILITY BRANCH
 APPROVED AS A TAX MAP PURSUANT TO THE
 PROVISIONS OF CHAPTER 175, LAWS OF 1913, ETC.
 FOR THE DIRECTOR, DIVISION OF TAXATION
 BY: *[Signature]* P.E. & L.S.
 LIC. # 15434 CHIEF, ENGINEERING SECTION
 JAN 22 1996 SFR # L. NO. *[initials]*

NEW JERSEY DEPARTMENT OF THE TREASURY
 DIVISION OF TAXATION
 LOCAL PROPERTY AND PUBLIC UTILITY BRANCH
 APPROVED AS A TAX MAP PURSUANT TO THE
 PROVISIONS OF CHAPTER 175, LAWS OF 1913, ETC.
 FOR THE DIRECTOR, DIVISION OF TAXATION
 BY: *[Signature]* P.E. & L.S.
 MAR 18 1977 # 500P
 SERIAL NO. 573

TAX MAP
 TOWNSHIP OF HAMILTON
 ATLANTIC COUNTY, NEW JERSEY
 SCALE: 1" = 100' DATE: JUNE 1, 1977

RONALD J. PRICE
 PLEASANTVILLE, N.J.
 N.J. LICENSE NO. 13501