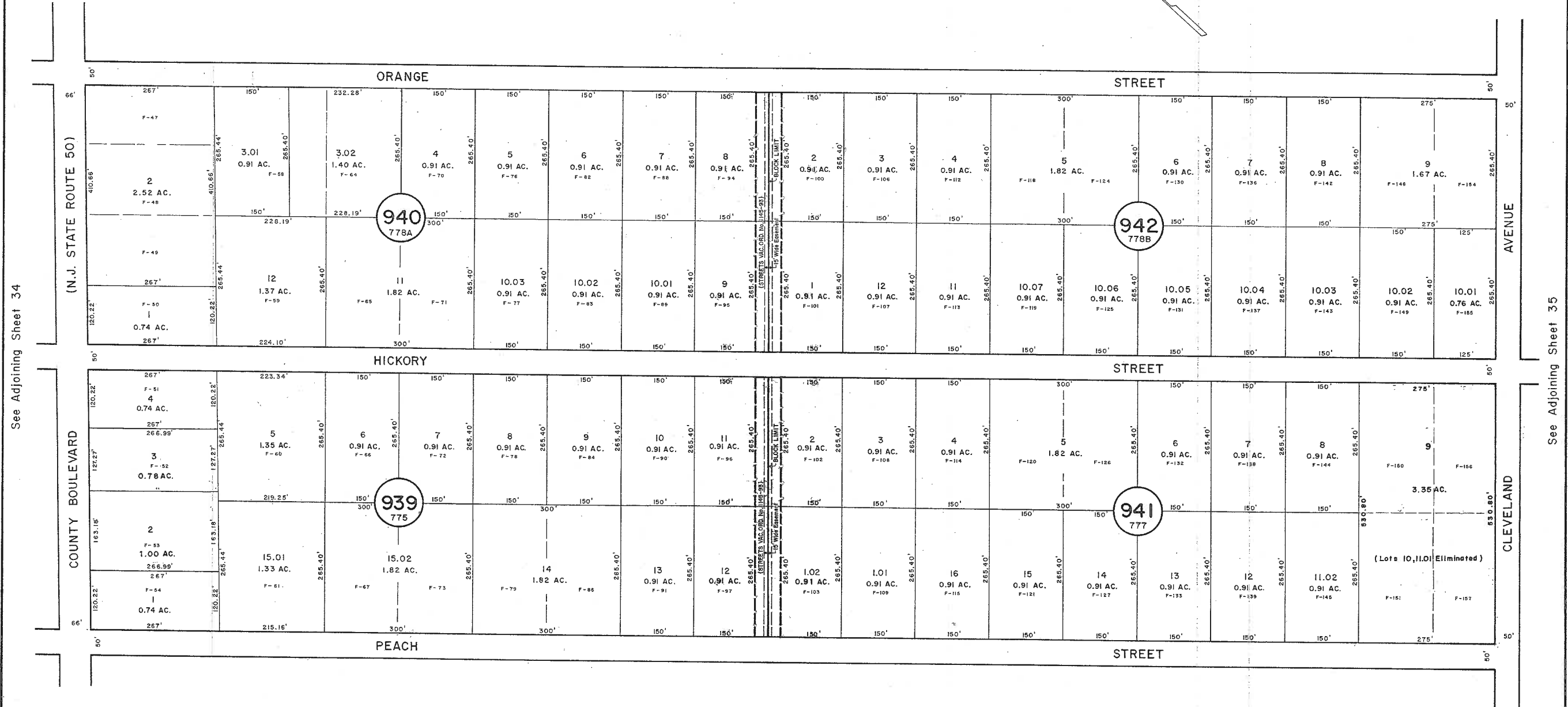
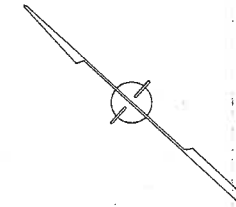


See Adjoining Sheet 35



See Adjoining Sheet 34

See Adjoining Sheet 35

See Adjoining Sheet 35

NEW JERSEY DEPARTMENT OF THE TREASURY  
 DIVISION OF TAXATION  
 LOCAL PROPERTY AND PUBLIC UTILITY BRANCH  
 APPROVED AS A TAX MAP PURSUANT TO THE  
 PROVISIONS OF CHAPTER 175, LAWS OF 1913, ETC.  
 FOR THE DIRECTOR, DIVISION OF TAXATION

*John R. Walker*  
 BY: JOHN R. WALKER, P.E. & L.S.  
 LIC. #12434 CHIEF, ENGINEERING SECTION  
 DATE: JAN 22 1988 SERIAL NO. 654

**TAX MAP**  
**TOWNSHIP OF HAMILTON**  
 ATLANTIC COUNTY, NEW JERSEY  
 SCALE: 1" = 100' DATE: JANUARY 23, 1981

JOHN R. WALKER  
 OCEAN CITY, N.J.  
 N.J. LICENSE NO. 10294

WPHA 4-7-86 REVISIONS

REVISED BY REMINGTON & VERNICK ENGINEERS - 5-5-2011  
REV. BY CHURCHILL - OCT. 1999, MAR. 2000, APRIL 2007