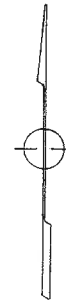
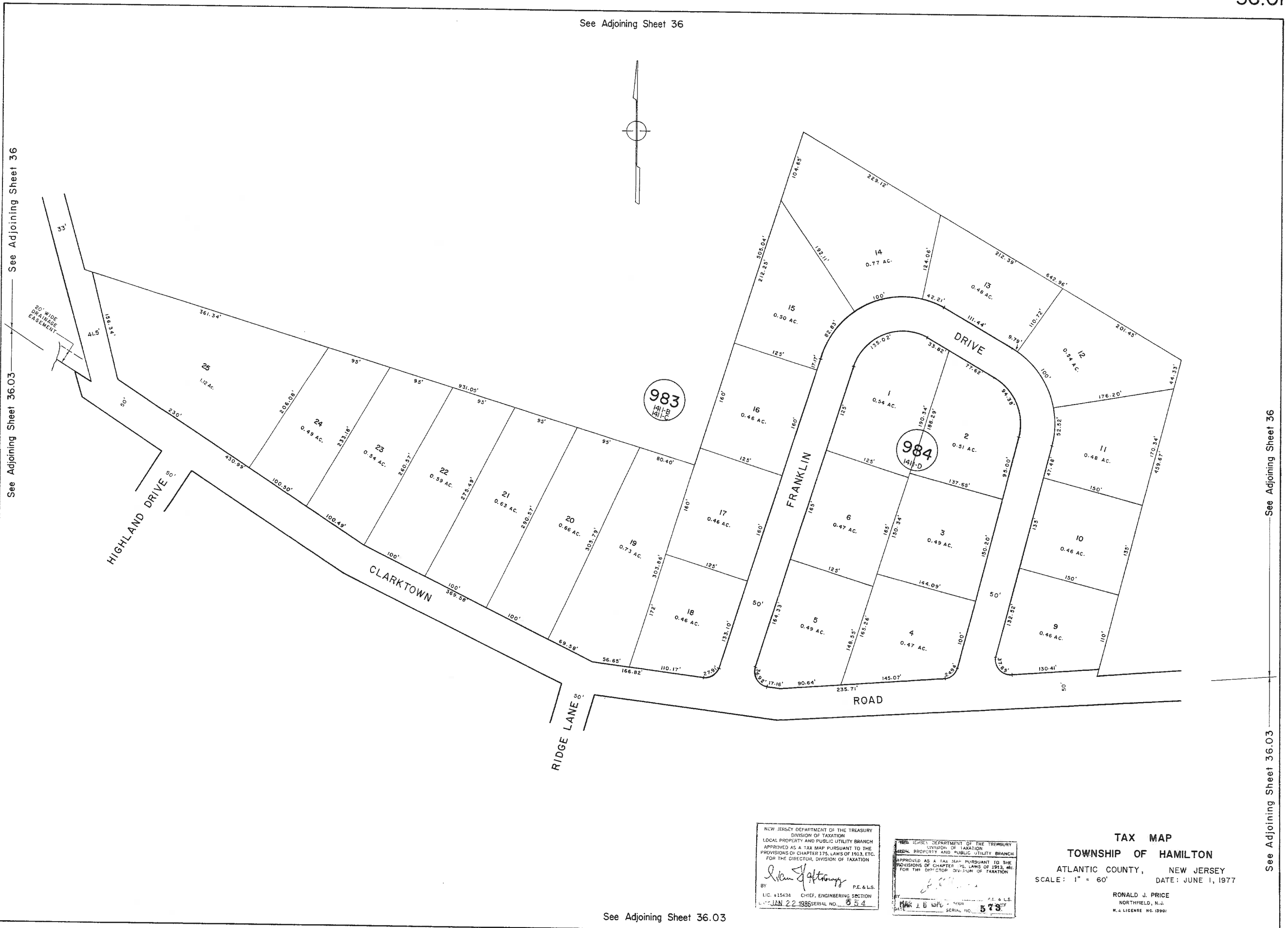


See Adjoining Sheet 36



See Adjoining Sheet 36.03



See Adjoining Sheet 36

See Adjoining Sheet 36.03

NEW JERSEY DEPARTMENT OF THE TREASURY  
 DIVISION OF TAXATION  
 LOCAL PROPERTY AND PUBLIC UTILITY BRANCH  
 APPROVED AS A TAX MAP PURSUANT TO THE  
 PROVISIONS OF CHAPTER 175, LAWS OF 1913, ETC.  
 FOR THE DIRECTOR, DIVISION OF TAXATION

*William J. Anthony* P.E. & L.S.  
 LIC. #15438 CHIEF, ENGINEERING SECTION  
 JAN 22 1986 SERIAL NO. 654

NEW JERSEY DEPARTMENT OF THE TREASURY  
 DIVISION OF TAXATION  
 LOCAL PROPERTY AND PUBLIC UTILITY BRANCH  
 APPROVED AS A TAX MAP PURSUANT TO THE  
 PROVISIONS OF CHAPTER 175, LAWS OF 1913, ETC.  
 FOR THE DIRECTOR, DIVISION OF TAXATION

*573*  
 JAN 22 1986 SERIAL NO. 573

TAX MAP  
 TOWNSHIP OF HAMILTON  
 ATLANTIC COUNTY, NEW JERSEY  
 SCALE: 1" = 60' DATE: JUNE 1, 1977

RONALD J. PRICE  
 NORTHFIELD, N.J.  
 N.J. LICENSE NO. 10901

See Adjoining Sheet 36.03