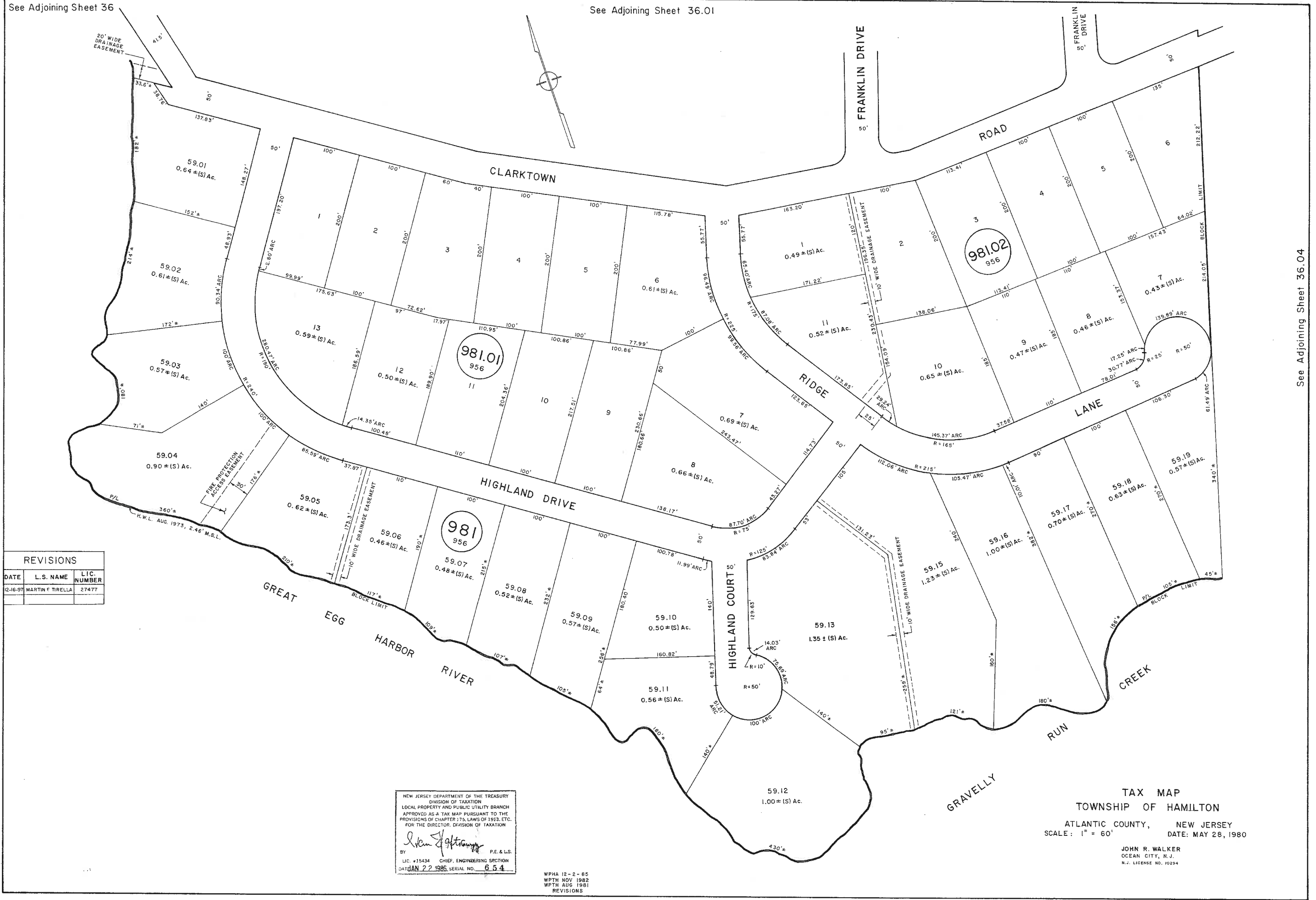


See Adjoining Sheet 36

See Adjoining Sheet 36.01



REVISIONS		
DATE	L.S. NAME	LIC. NUMBER
12-16-97	MARTIN F TIRELLA	27477

NEW JERSEY DEPARTMENT OF THE TREASURY
 DIVISION OF TAXATION
 LOCAL PROPERTY AND PUBLIC UTILITY BRANCH
 APPROVED AS A TAX MAP PURSUANT TO THE
 PROVISIONS OF CHAPTER 175, LAWS OF 1993, ETC.
 FOR THE DIRECTOR, DIVISION OF TAXATION

John Walker
 BY: P.E. & L.S.
 LIC. #15434 CHIEF, ENGINEERING SECTION
 DATE: JAN 22 1988 SERIAL NO. 654

WPHA 12-2-85
 WPTH NOV 1982
 WPTH AUG 1981
 REVISIONS

TAX MAP
 TOWNSHIP OF HAMILTON
 ATLANTIC COUNTY, NEW JERSEY
 SCALE: 1" = 60' DATE: MAY 28, 1980

JOHN R. WALKER
 OCEAN CITY, N.J.
 N.J. LICENSE NO. 10294

See Adjoining Sheet 36.04