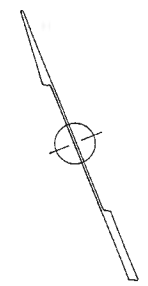
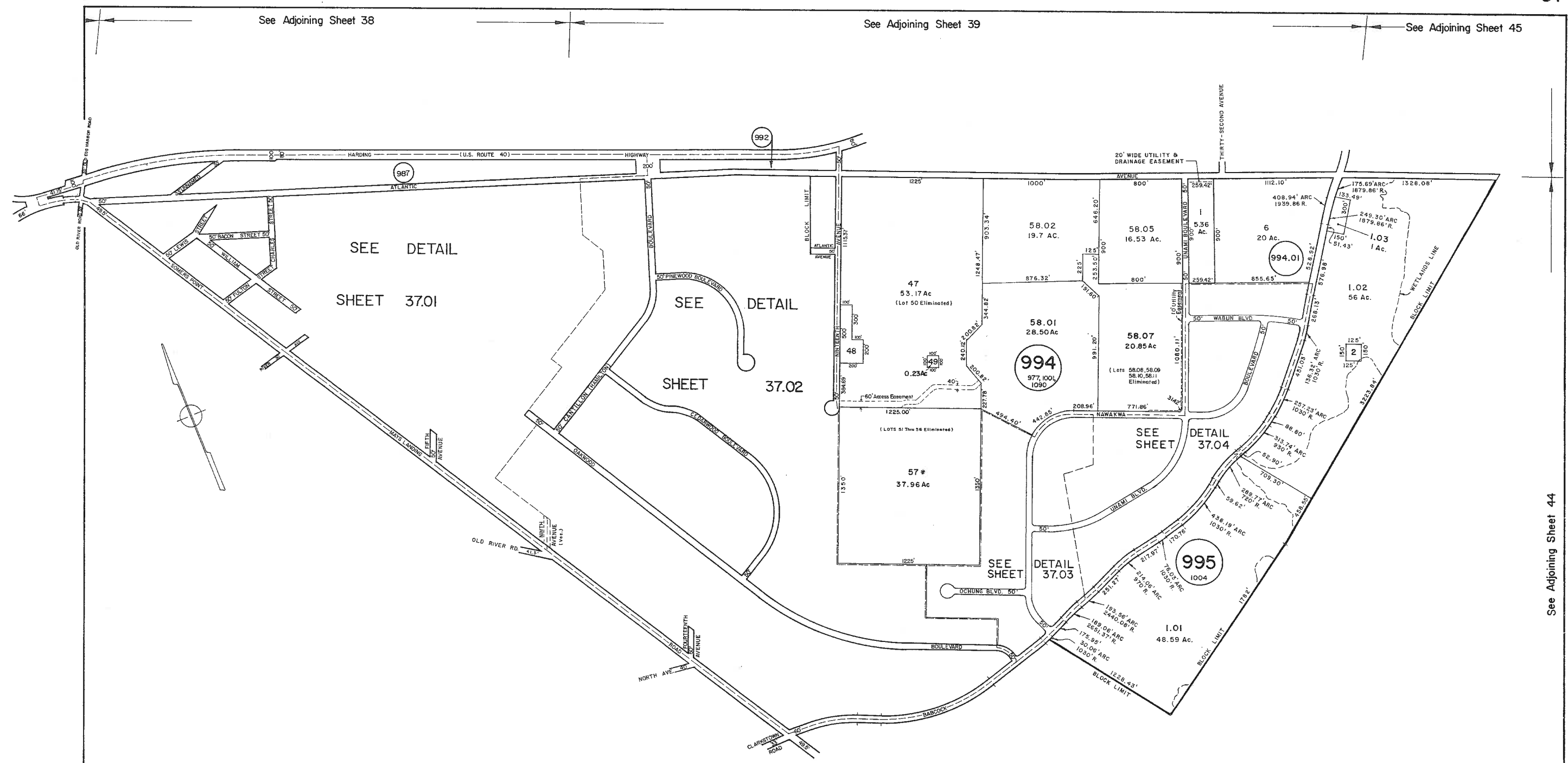


See Adjoining Sheet 38

See Adjoining Sheet 39

See Adjoining Sheet 45



SEE DETAIL SHEET 37.01

SEE DETAIL SHEET 37.02

SEE SHEET 37.04

SEE SHEET 37.03

* EXEMPT TOWNSHIP OF HAMILTON

DATE	L.S. NAME	LIC. No.
11-18-97	MARTIN E TIRELLA	LS27477
REVISIONS		

WPHA 12 - 15 - 93	FEB. 2008
WPHA 12 - 3 - 92	MAY 2003
WPHA 4 - 27 - 90	MAR. 2002
WPHA 12 - 12 - 88	AUG. 2001
WPTH OCT 1982	See Adjoining Sheet 36
WPTH DEC 1981	REVISIONS

REVISED BY CHURCHILL - DEC., 2000

NEW JERSEY DEPARTMENT OF THE TREASURY
DIVISION OF TAXATION
LOCAL PROPERTY AND PUBLIC UTILITY BRANCH
APPROVED AS A TAX MAP PURSUANT TO THE PROVISIONS OF CHAPTER 175, LAWS OF 1913, ETC. FOR THE DIRECTOR, DIVISION OF TAXATION

[Signature]
BY
LIC. #15436 CHIEF, ENGINEERING SECTION
DATE JAN 22 1998 SERIAL NO. 654

NEW JERSEY DEPARTMENT OF THE TREASURY
DIVISION OF TAXATION
LOCAL PROPERTY AND PUBLIC UTILITY BRANCH
APPROVED AS A TAX MAP PURSUANT TO THE PROVISIONS OF CHAPTER 175, LAWS OF 1913, ETC. FOR THE DIRECTOR, DIVISION OF TAXATION

[Signature]
BY
LIC. #15436 CHIEF, ENGINEERING SECTION
DATE JAN 18 1998 SERIAL NO. 578

TAX MAP
TOWNSHIP OF HAMILTON
ATLANTIC COUNTY, NEW JERSEY
SCALE: 1" = 400'
DATE: JUNE 1, 1977

RONALD J. PRICE
PLEASANTVILLE, N.J.
N.J. LICENSE NO. 15901

See Adjoining Sheet 42

See Adjoining Sheet 43

See Adjoining Sheet 44