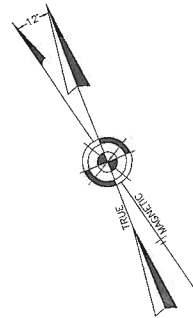
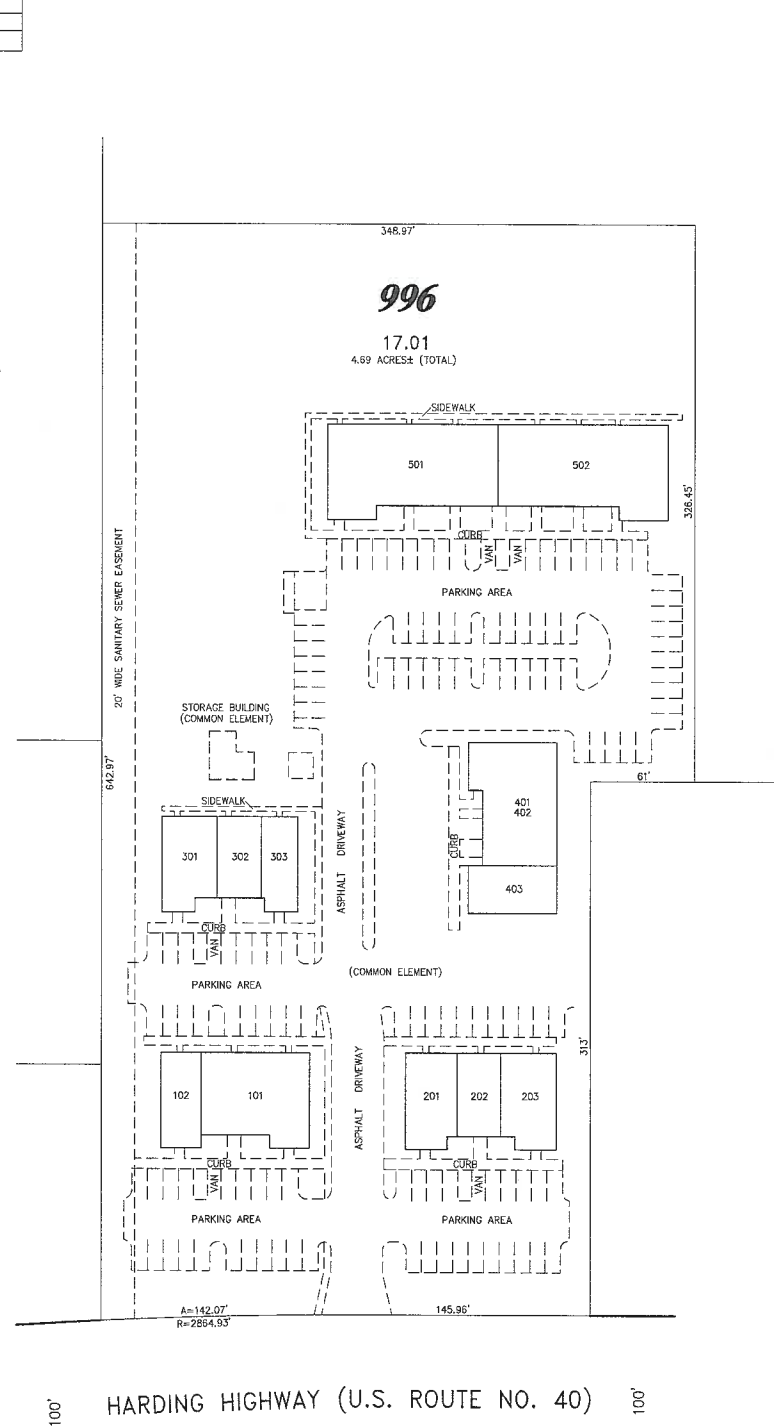


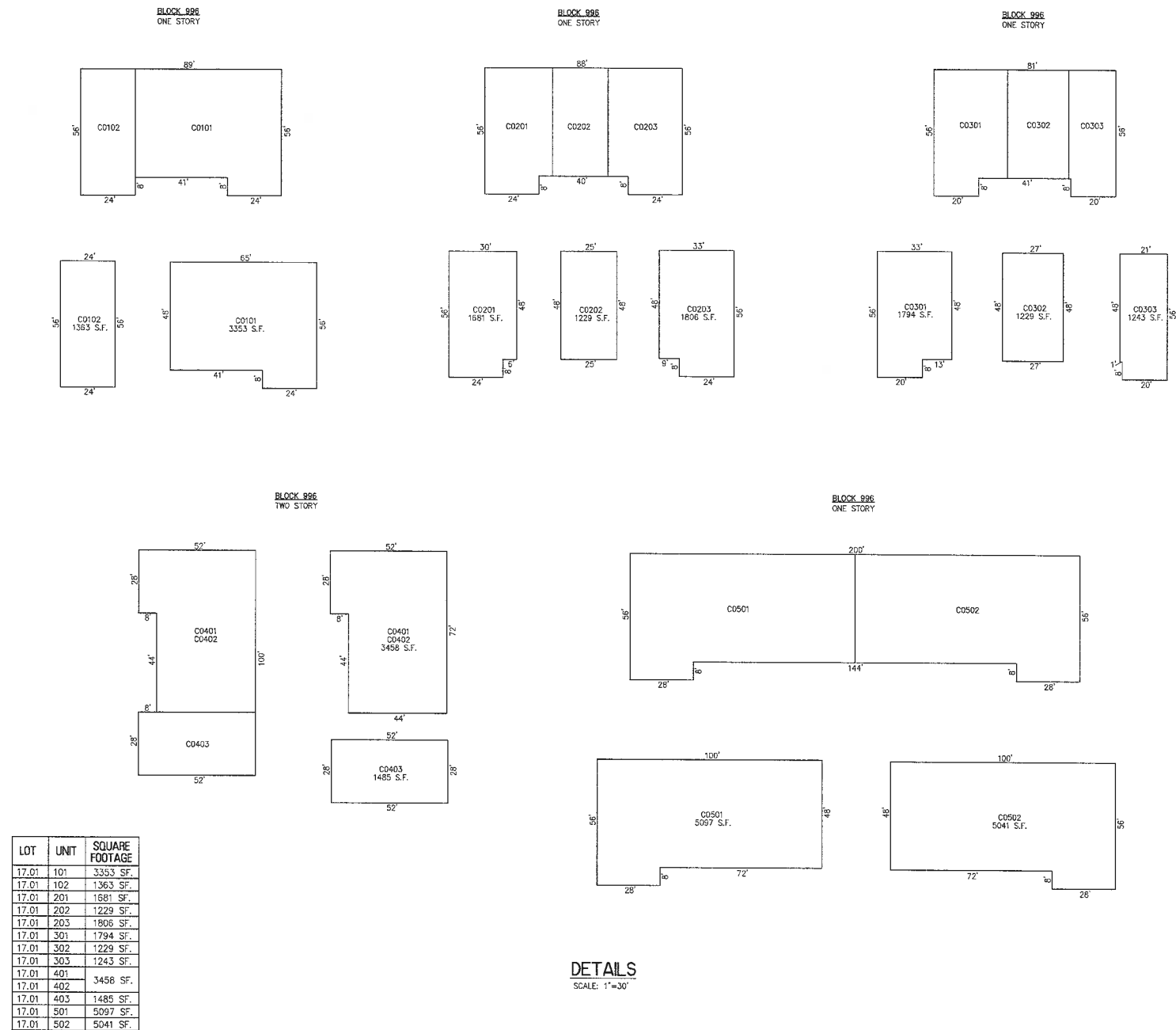
REVISIONS		
10-10-2008	CRAIG F. REMINGTON	23924



NOTE:
 1. THIS SHEET HAS BEEN DRAWN USING COMPUTER AIDED DRAFTING/DESIGN (CAD/D) AND COORDINATE GEOMETRY (GOCO).
 2. DIMENSIONS AND SQUARE FOOTAGE ARE TYPICAL FOR ALL SIMILAR UNITS.
 3. ALL CONDOMINIUM UNIT SQUARE FOOTAGE AREAS AND DIMENSIONS REFLECT FIELD MEASUREMENTS.



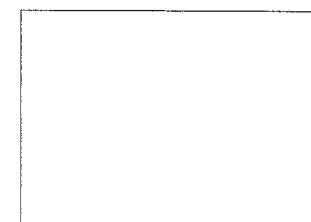
PLAN
SCALE: 1"=50'




LOT	UNIT	SQUARE FOOTAGE
17.01	101	3353 S.F.
17.01	102	1363 S.F.
17.01	201	1681 S.F.
17.01	203	1229 S.F.
17.01	203	1806 S.F.
17.01	301	1794 S.F.
17.01	302	1229 S.F.
17.01	303	1243 S.F.
17.01	401	3456 S.F.
17.01	402	1485 S.F.
17.01	403	1485 S.F.
17.01	501	5097 S.F.
17.01	502	5041 S.F.

DETAILS
SCALE: 1"=30'

BLOCK 996, LOT 17.01
 INSET "A"
 CONDOMINIUM DETAILS AND DIMENSIONS
 BLOCK 996, LOT 17.01
 SEE PLATE 38



TAX MAP
TOWNSHIP OF HAMILTON
 ATLANTIC COUNTY NEW JERSEY
 SCALE: 1" = 50' DATE: 10-10-2008
CRAIG F. REMINGTON LAND SURVEYOR LIC. NO. 23924
 **REMINGTON, VERNICK & WALBERG ENGINEERS**
 24 GA 28048700
 645 N. MAIN STREET, PLEASANTVILLE, NJ 08232
 (609) 645-7100 FAX (609) 645-7076
 WEB SITE ADDRESS: WWW.RVW.COM