

REVISIONS

WPHA 2-21-89
WPHA 11-12-90
WPHA 10-28-91
WPHA 3-12-93
WPHA 4-12-96
WPHA 12-17-96

REVISIONS

DATE	LS NAME	LIC. NO.
9/29/98	MARTIN TIRELLA	27477
1/29/99	MARTIN TIRELLA	27477
3-2017	DIXON ASSOCIATES THOMAS A. PROSDOCIMI	LS. 37604

See Adjoining Sheet 45

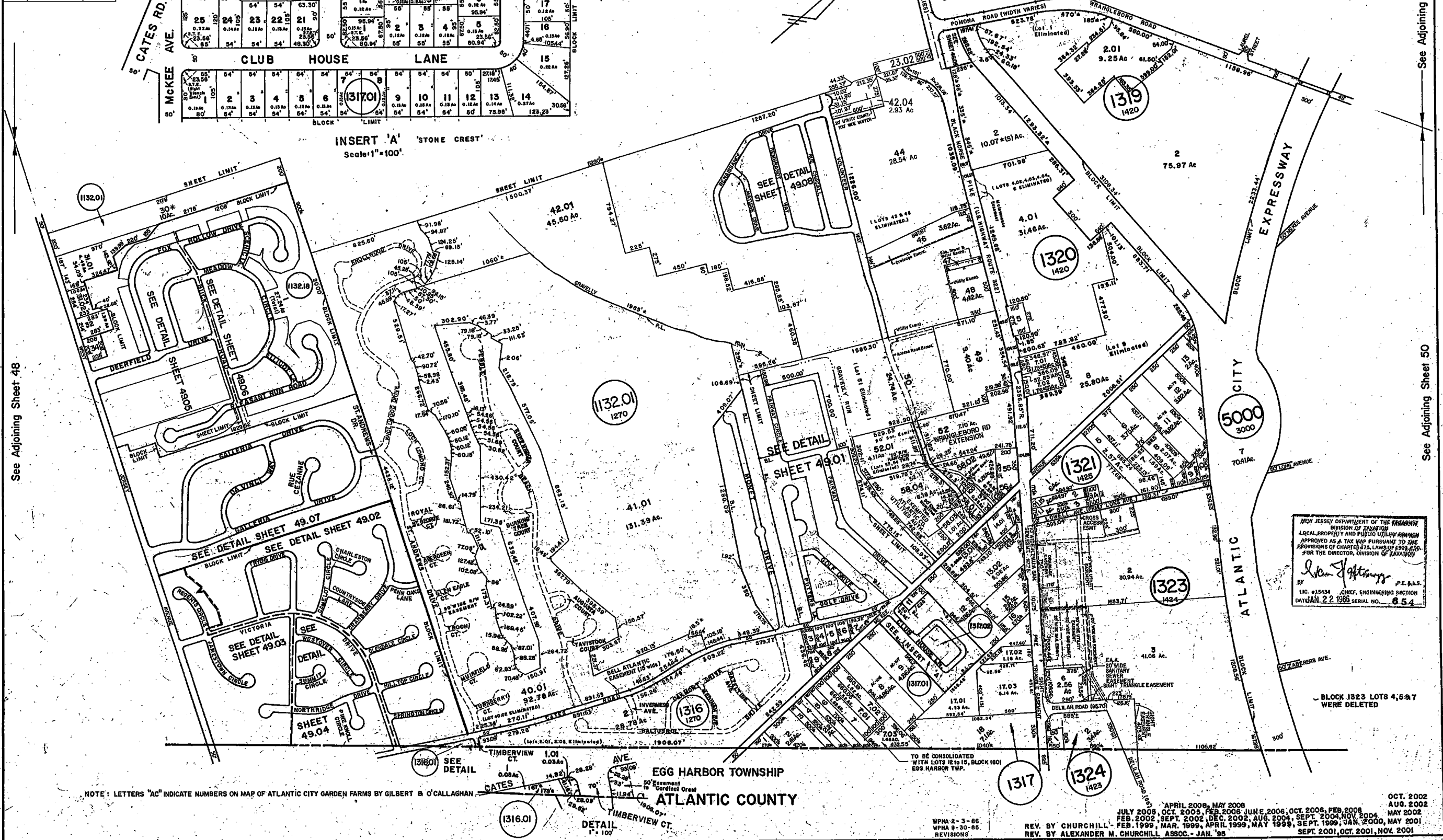
See Adjoining Sheet 46

NEW JERSEY DEPARTMENT OF THE TREASURY
DIVISION OF TAXATION
LOCAL PROPERTY AND PUBLIC UTILITY BRANCH
APPROVED AS A TAX MAP PURSUANT TO THE
PROVISIONS OF CHAPTER 175, LAWS OF 1913, ETC.
FOR THE DIRECTOR, DIVISION OF TAXATION

J. N. Wilson
BY: MAR 10 1978 P.E. & L.S.
DATE: MAR 10 1978 SERIAL NO. 673

TAX MAP
TOWNSHIP OF HAMILTON
ATLANTIC COUNTY, NEW JERSEY
SCALE: 1" = 400'
DATE: JUNE 1, 1977

RONALD J. PRICE
PLEASANTVILLE, N.J.
N.J. LICENSE NO. 15901



See Adjoining Sheet 48

See Adjoining Sheet 47

See Adjoining Sheet 50

NOTE: LETTERS "ac" INDICATE NUMBERS ON MAP OF ATLANTIC CITY GARDEN FARMS BY GILBERT & O'CALLAGHAN

EGG HARBOR TOWNSHIP
ATLANTIC COUNTY

TO BE CONSOLIDATED
WITH LOTS 12 TO 15, BLOCK 1801
EGG HARBOR TWP.

NEW JERSEY DEPARTMENT OF THE TREASURY
DIVISION OF TAXATION
LOCAL PROPERTY AND PUBLIC UTILITY BRANCH
APPROVED AS A TAX MAP PURSUANT TO THE
PROVISIONS OF CHAPTER 175, LAWS OF 1913, ETC.
FOR THE DIRECTOR, DIVISION OF TAXATION

Alexander M. Churchill
BY: LIC. #15434, CHIEF, ENGINEERING SECTION
DATE: JAN 22 1986 SERIAL NO. 654

BLOCK 1323 LOTS 4, 5 & 7 WERE DELETED

1317
1324
1423

APRIL 2006, MAY 2006
OCT. 2002, AUG. 2002
JULY 2005, OCT. 2006, FEB. 2006, JUNE 2006, OCT. 2006, FEB. 2008
MAY 2002, SEPT. 2002, DEC. 2002, AUG. 2004, SEPT. 2004, NOV. 2004
REV. BY CHURCHILL - FEB. 1999, MAR. 1999, APRIL 1999, MAY 1999, JAN. 2000, MAY 2001
REV. BY ALEXANDER M. CHURCHILL ASSOC. - JAN. '95
OCT. 2002, AUG. 2002, MAY 2002, SEPT. 2001, OCT. 2001, NOV. 2001