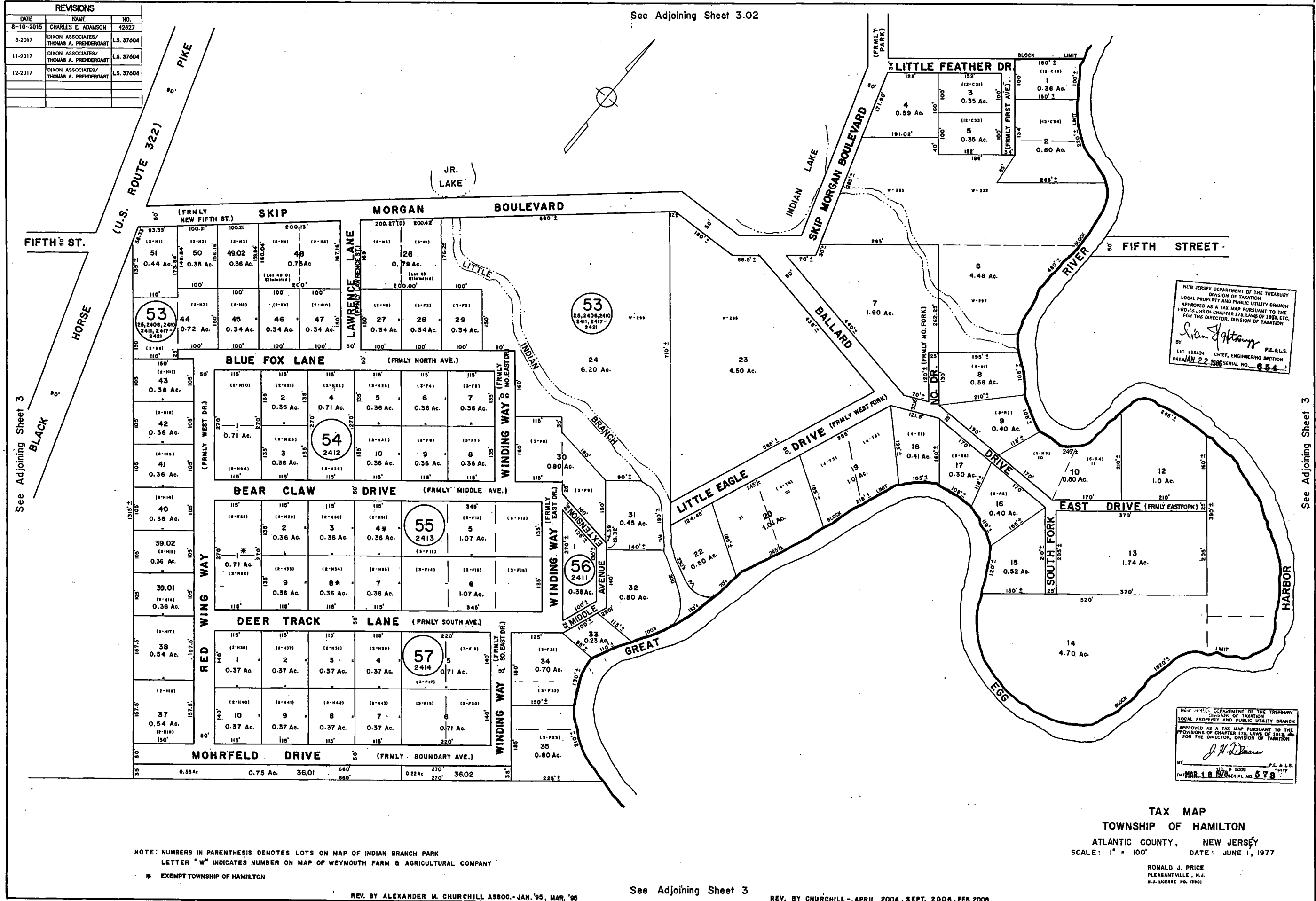


REVISIONS		
DATE	NAME	NO.
8-10-2015	CHARLES E. ADAMSON	42827
3-2017	DIXON ASSOCIATES/ THOMAS A. PRENDERGAST	L.S. 37604
11-2017	DIXON ASSOCIATES/ THOMAS A. PRENDERGAST	L.S. 37604
12-2017	DIXON ASSOCIATES/ THOMAS A. PRENDERGAST	L.S. 37604

See Adjoining Sheet 3.02



NEW JERSEY DEPARTMENT OF THE TREASURY
DIVISION OF TAXATION
LOCAL PROPERTY AND PUBLIC UTILITY BRANCH
APPROVED AS A TAX MAP PURSUANT TO THE
PROVISIONS OF CHAPTER 175, LAWS OF 1975, ETC.
FOR THE DIRECTOR, DIVISION OF TAXATION
Susan J. Johnson
BY: L.I.C. #15434 P.E. & L.S.
DATE: JAN 22 1996 SERIAL NO. 654

NEW JERSEY DEPARTMENT OF THE TREASURY
DIVISION OF TAXATION
LOCAL PROPERTY AND PUBLIC UTILITY BRANCH
APPROVED AS A TAX MAP PURSUANT TO THE
PROVISIONS OF CHAPTER 175, LAWS OF 1975, ETC.
FOR THE DIRECTOR, DIVISION OF TAXATION
J. H. Davis
BY: L.I.C. # 5008 P.E. & L.S.
DATE: MAR 16 1978 SERIAL NO. 678

TAX MAP
TOWNSHIP OF HAMILTON
ATLANTIC COUNTY, NEW JERSEY
SCALE: 1" = 100' DATE: JUNE 1, 1977

RONALD J. PRICE
PLEASANTVILLE, N.J.
N.J. LICENSE NO. 19701

NOTE: NUMBERS IN PARENTHESIS DENOTES LOTS ON MAP OF INDIAN BRANCH PARK
LETTER "W" INDICATES NUMBER ON MAP OF WEYMOUTH FARM & AGRICULTURAL COMPANY
* EXEMPT TOWNSHIP OF HAMILTON

REV. BY ALEXANDER M. CHURCHILL ASSOC. - JAN. '95, MAR. '96

See Adjoining Sheet 3

REV. BY CHURCHILL - APRIL 2004, SEPT. 2006, FEB. 2008

See Adjoining Sheet 3

See Adjoining Sheet 3