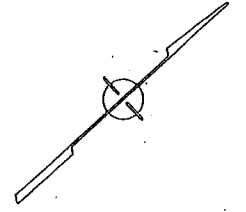
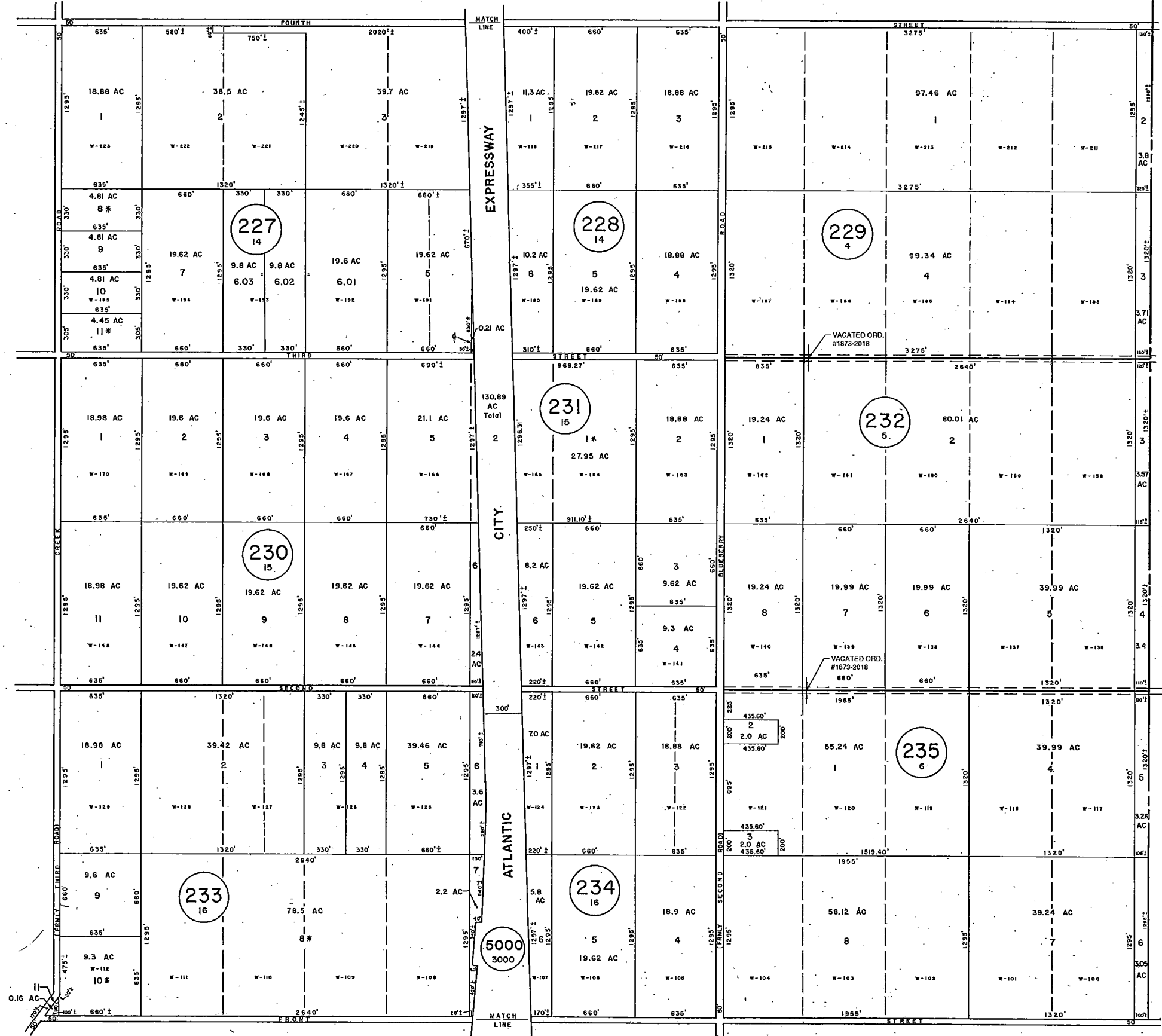


See Adjoining Sheet 4

| REVISIONS | | |
|-----------|--|-----------|
| DATE | REVISED BY | LIC. NO. |
| 4-2010 | ENGINEERING DESIGN ASSOC. THOMAS A. FREYBERGAST | LS. 37604 |
| | | |
| | | |

See Adjoining Sheet 8



NEW JERSEY DEPARTMENT OF THE TREASURY
DIVISION OF TAXATION
LOCAL PROPERTY AND PUBLIC UTILITY BRANCH
APPROVED AS A TAX MAP PURSUANT TO THE
PROVISIONS OF CHAPTER 175, LAWS OF 1913, ETC.
FOR THE DIRECTOR, DIVISION OF TAXATION

John J. Hoffmann
BY: P.E. & L.S.
LIC. #15434 CHIEF, ENGINEERING SECTION
DATE: JAN 22 1986 SERIAL NO. 654

NEW JERSEY DEPARTMENT OF THE TREASURY
DIVISION OF TAXATION
LOCAL PROPERTY AND PUBLIC UTILITY BRANCH
APPROVED AS A TAX MAP PURSUANT TO THE
PROVISIONS OF CHAPTER 175, LAWS OF 1913, ETC.
FOR THE DIRECTOR, DIVISION OF TAXATION

John J. Hoffmann
BY: P.E. & L.S.
LIC. #15434 CHIEF, ENGINEERING SECTION
DATE: MAR 10 1978 SERIAL NO. 579

TAX MAP
TOWNSHIP OF HAMILTON
ATLANTIC COUNTY, NEW JERSEY
SCALE: 1" = 400' DATE: JUNE 1, 1977

RONALD J. PRICE
PLEASANTVILLE, N.J.
N.J. LICENSE NO. 0301

* EXEMPT TOWNSHIP OF HAMILTON
LETTER "W" INDICATES NUMBER ON MAP OF WEYMOUTH FARM & AGRICULTURAL CO.

See Adjoining Sheet 11

REV. BY CHURCHILL - FEB. 2008
REV. BY ALEXANDER M. CHURCHILL ASSOC. - JAN. '95

WPHA 5-7-84
REVISIONS