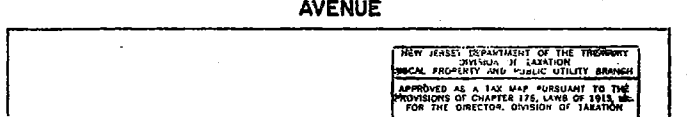
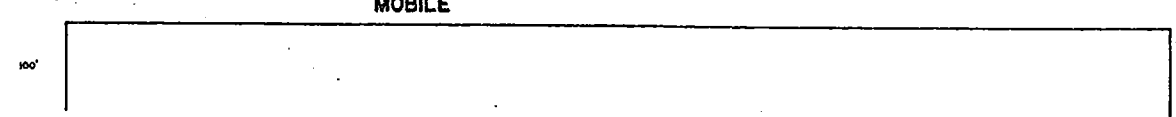
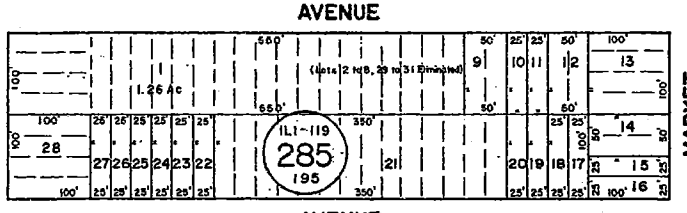
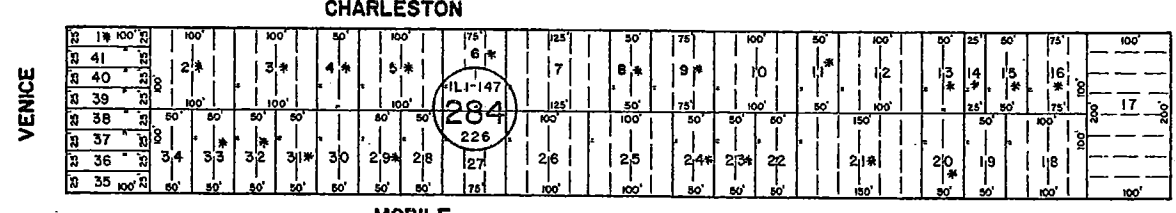
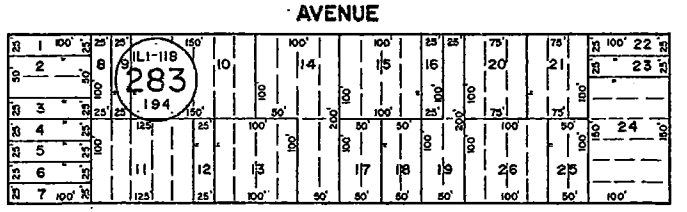
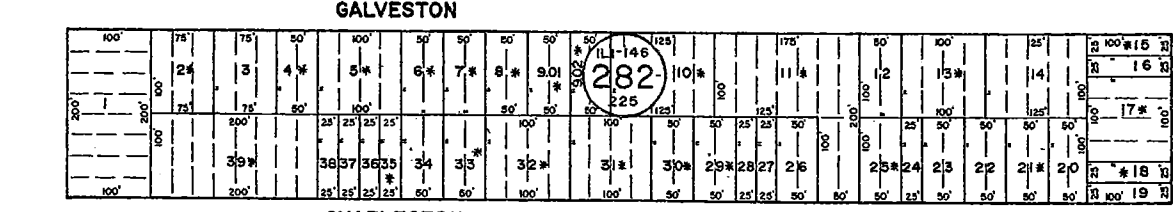
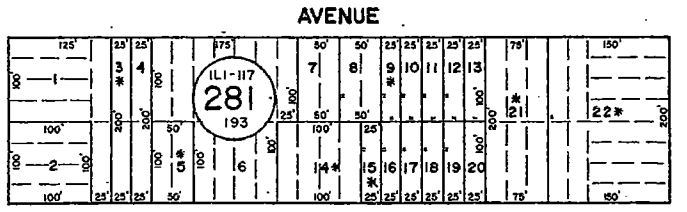
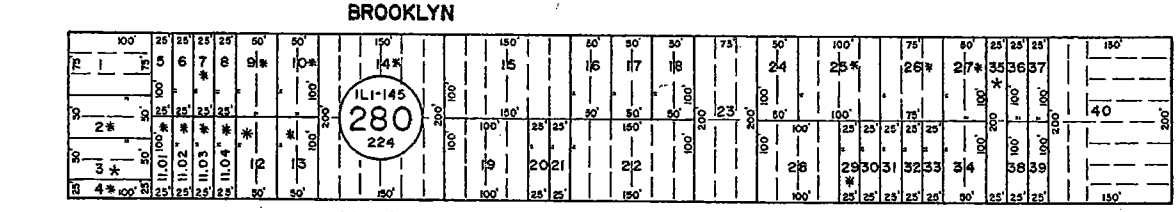
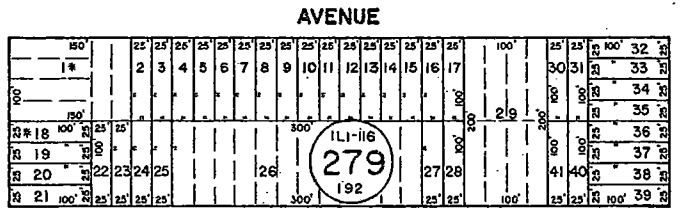
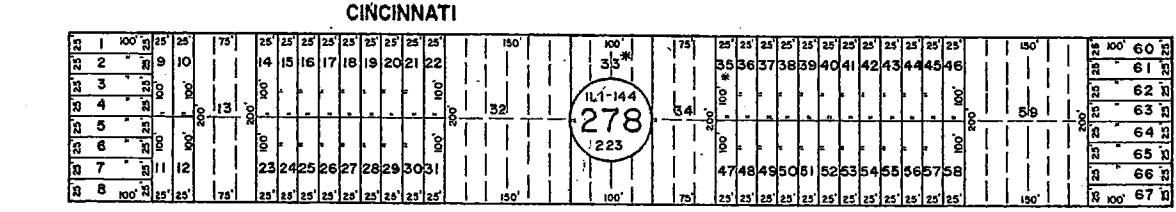
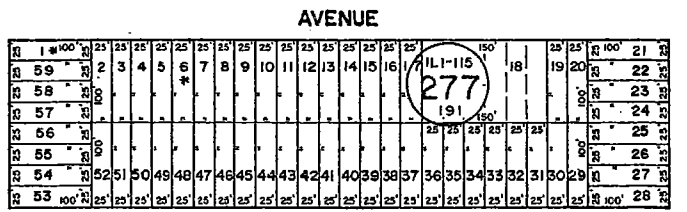
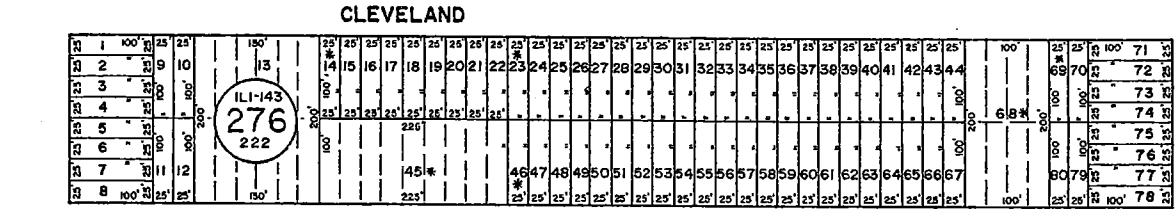
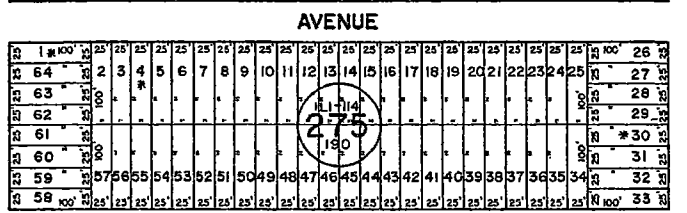
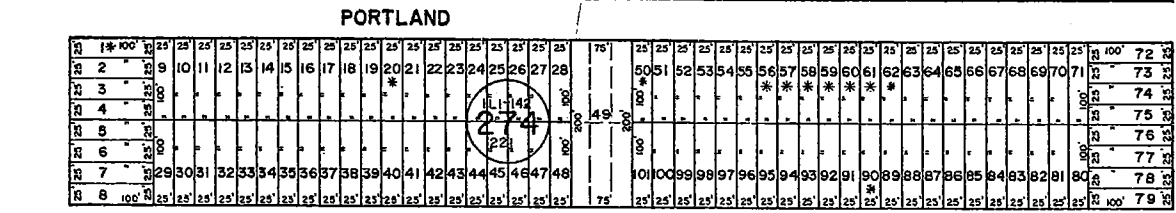
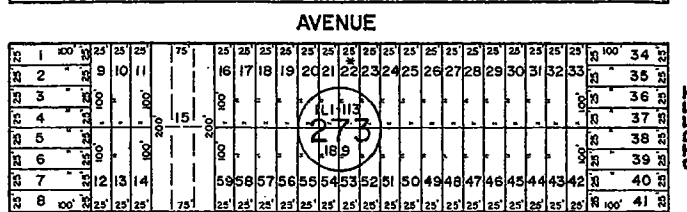
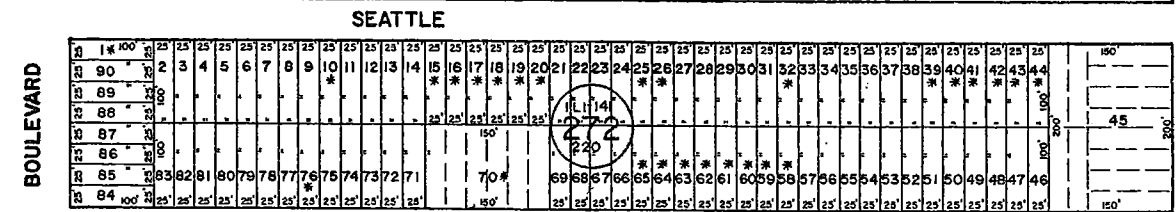


See Adjoining Sheet 5.07

REVISIONS		
DATE	NAME	NO.
3-20-17	OXON ASSOCIATES/ THOMAS A. PRINDEGAST	L.S. 37604
2-20-18	OXON ASSOCIATES/ THOMAS A. PRINDEGAST	L.S. 37604
9-13-18	ENGINEERING DESIGN ASSOC. THOMAS A. PRINDEGAST	L.S. 37604



See Adjoining Sheet 14.02

See Adjoining Sheet 14.04

NOTE: LETTERS "ILI" INDICATES NUMBER ON MAP OF INDUSTRIAL LAND COMPANY
 * EXEMPT TOWNSHIP OF HAMILTON
 REVISED BY R&V - 1-8-2013
 REVISED BY CHURCHILL - MAR. 2005, FEB. 2008

See Adjoining Sheet 14.06

WPMA 4-19-85 REVISIONS

NEW JERSEY DEPARTMENT OF THE TREASURY
 DIVISION OF TAXATION
 LOCAL PROPERTY AND PUBLIC UTILITY BRANCH
 APPROVED AS A TAX MAP PURSUANT TO THE
 PROVISIONS OF CHAPTER 175, LAWS OF 1913, ETC.
 FOR THE DIRECTOR, DIVISION OF TAXATION
Ronald J. Price
 BY: P.E. & L.S.
 LIC. #13434 CHIEF, ENGINEERING SECTION
 DATE: JAN 22 1998 SERIAL NO. 654

TAX MAP
 TOWNSHIP OF HAMILTON
 ATLANTIC COUNTY, NEW JERSEY
 SCALE: 1" = 100' DATE: JUNE 1, 1977

RONALD J. PRICE
 PLEASANTVILLE, N.J.
 A.S. LICENSE # 12001

NEW JERSEY DEPARTMENT OF THE TREASURY
 DIVISION OF TAXATION
 LOCAL PROPERTY AND PUBLIC UTILITY BRANCH
 APPROVED AS A TAX MAP PURSUANT TO THE
 PROVISIONS OF CHAPTER 175, LAWS OF 1913, ETC.
 FOR THE DIRECTOR, DIVISION OF TAXATION
Ronald J. Price
 BY: P.E. & L.S.
 LIC. # 5009
 DATE: MAR 16 1994 SERIAL NO. 578