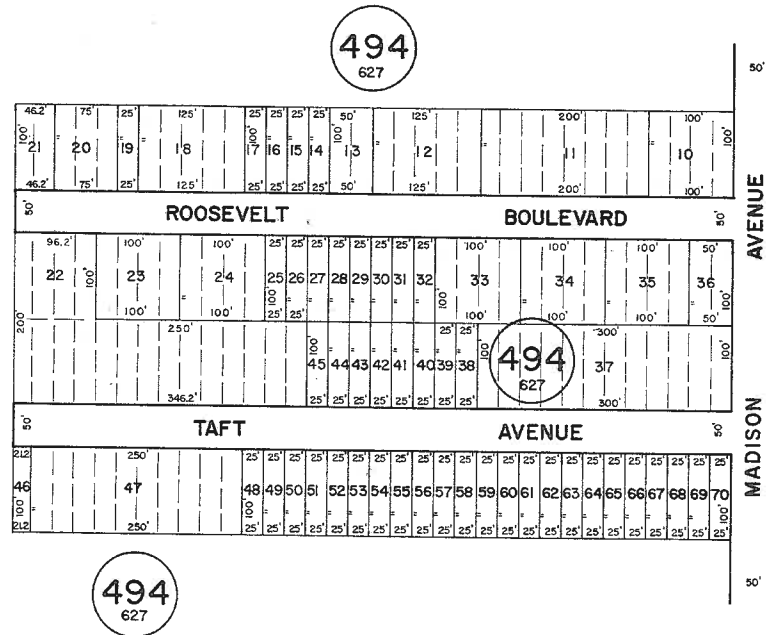
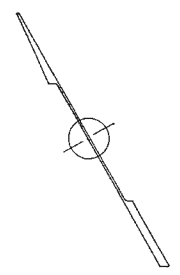


See Adjoining Sheet 14

See Adjoining Sheet 14

See Adjoining Sheet 16



See Adjoining Sheet 14

NEW JERSEY DEPARTMENT OF THE TREASURY  
DIVISION OF TAXATION  
LOCAL PROPERTY AND PUBLIC UTILITY BRANCH  
APPROVED AS A TAX MAP PURSUANT TO THE  
PROVISIONS OF CHAPTER 175, LAWS OF 1913, ETC.  
FOR THE DIRECTOR, DIVISION OF TAXATION

*John J. Gallo*  
P.E. & L.S.  
LIC. #15434 CHIEF, ENGINEERING SECTION  
JAN 22 1988, SERIAL NO. 654

NEW JERSEY DEPARTMENT OF THE TREASURY  
DIVISION OF TAXATION  
LOCAL PROPERTY AND PUBLIC UTILITY BRANCH  
APPROVED AS A TAX MAP PURSUANT TO THE  
PROVISIONS OF CHAPTER 175, LAWS OF 1913, ETC.  
FOR THE DIRECTOR, DIVISION OF TAXATION

*J. R. ...*  
P.E. & L.S.  
DATE MAR 16 1978, SERIAL NO. 5287

TAX MAP  
TOWNSHIP OF HAMILTON  
ATLANTIC COUNTY, NEW JERSEY  
SCALE: 1" = 100'

RONALD J. PRICE  
PLEASANTVILLE, N.J.  
N.J. LICENSE NO. 13901