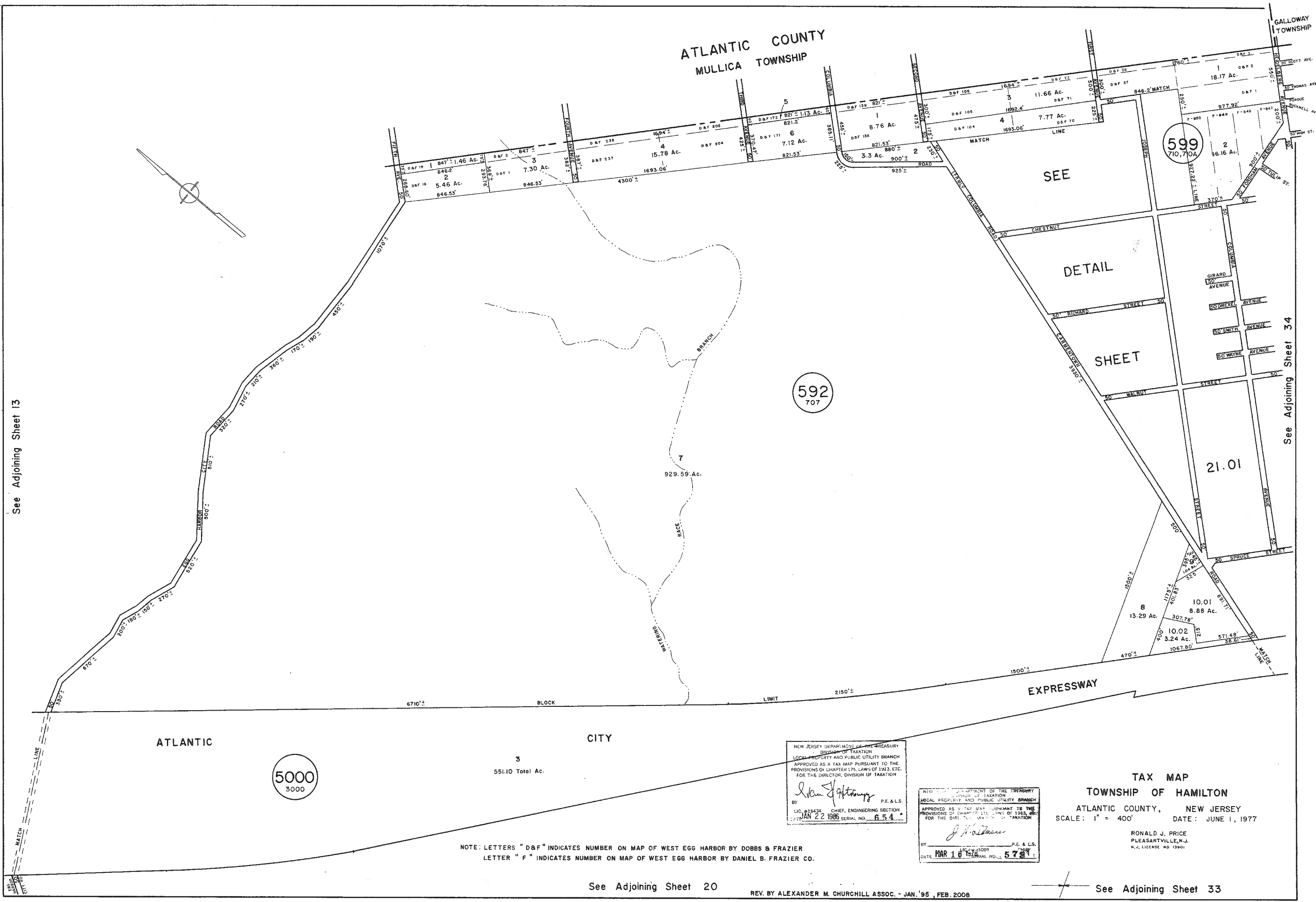


ATLANTIC COUNTY
MULLICA TOWNSHIP

GALLOWAY TOWNSHIP



See Adjoining Sheet 13

See Adjoining Sheet 34

NEW JERSEY DEPARTMENT OF THE TREASURY
DIVISION OF TAXATION
LOCAL PROPERTY AND PUBLIC UTILITY BRANCH
APPROVED AS A TAX MAP PURSUANT TO THE
PROVISIONS OF CHAPTER 175, LAWS OF 1983, ETC.
FOR THE DIRECTOR, DIVISION OF TAXATION

Alexander M. Churchill
LIC. #25434 CHIEF, ENGINEERING SECTION
DATE: JAN 22 1988 SERIAL NO. 654

NEW JERSEY DEPARTMENT OF THE TREASURY
LOCAL PROPERTY AND PUBLIC UTILITY BRANCH
APPROVED AS A TAX MAP PURSUANT TO THE
PROVISIONS OF CHAPTER 175, LAWS OF 1983, ETC.
FOR THE DIRECTOR, DIVISION OF TAXATION

Ronald J. Price
LIC. #3509 CHIEF
DATE: MAR 16 1988 SERIAL NO. 5781

TAX MAP
TOWNSHIP OF HAMILTON
ATLANTIC COUNTY, NEW JERSEY
SCALE: 1" = 400' DATE: JUNE 1, 1977

RONALD J. PRICE
PLEASANTVILLE, N.J.
N.J. LICENSE NO. 13901

NOTE: LETTERS "D&F" INDICATES NUMBER ON MAP OF WEST EGG HARBOR BY DOBBS & FRAZIER
LETTER "F" INDICATES NUMBER ON MAP OF WEST EGG HARBOR BY DANIEL B. FRAZIER CO.

See Adjoining Sheet 20

REV. BY ALEXANDER M. CHURCHILL ASSOC. - JAN. '95, FEB. 2008

See Adjoining Sheet 33