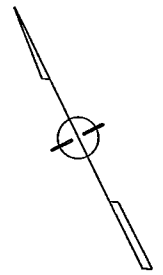
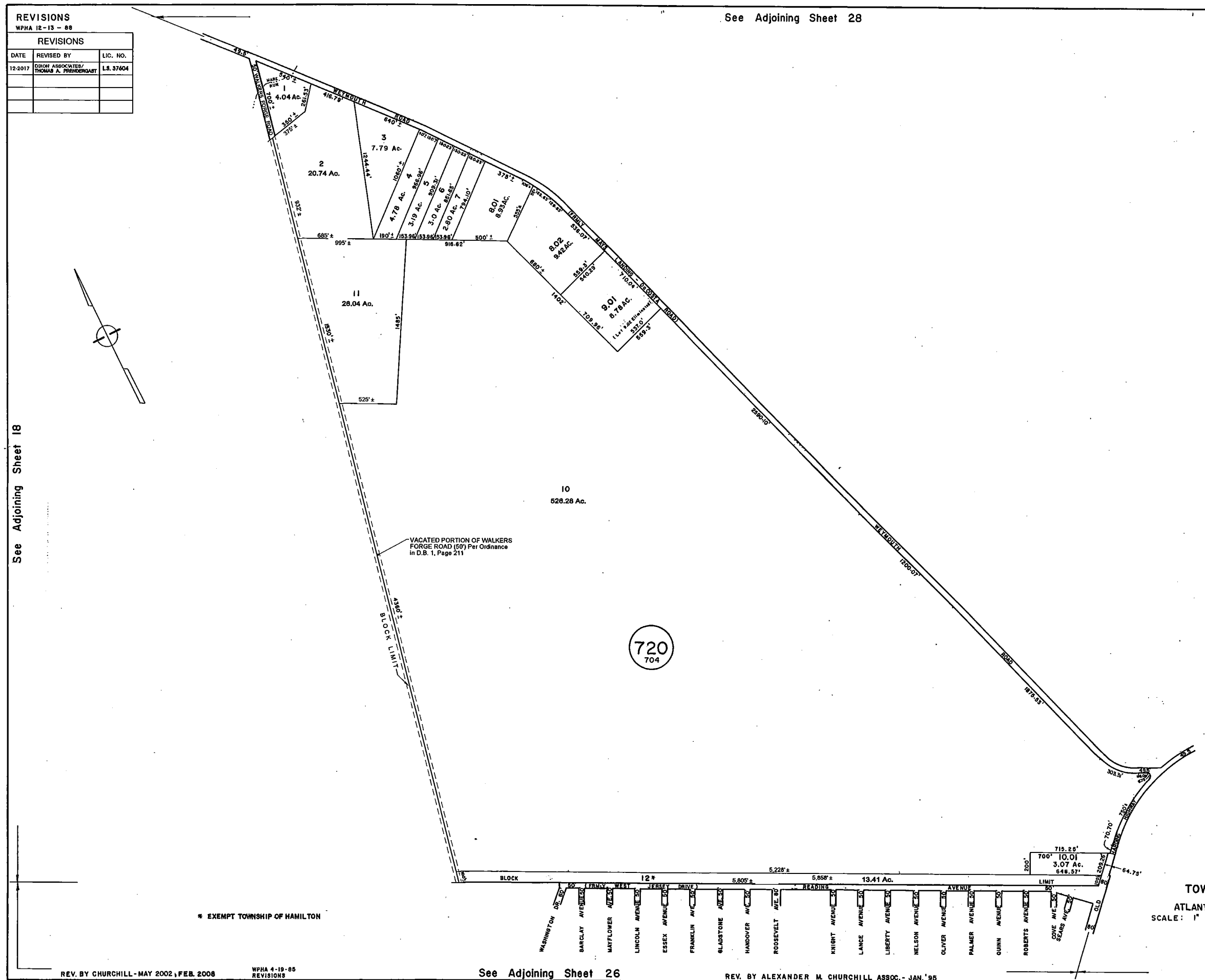


See Adjoining Sheet 28

REVISIONS		
WPHA 12-13 - 88		
REVISIONS		
DATE	REVISED BY	LIC. NO.
12-2017	DIXON ASSOCIATES/ THOMAS A. FRIEDENSTADT	L.S. 37604



See Adjoining Sheet 18



720
704

NEW JERSEY DEPARTMENT OF THE TREASURY
DIVISION OF TAXATION
LOCAL PROPERTY AND PUBLIC UTILITY BRANCH
APPROVED AS A TAX MAP PURSUANT TO THE
PROVISIONS OF CHAPTER 175, LAWS OF 1914, ETC.
FOR THE DIRECTOR, DIVISION OF TAXATION

Alan J. Heston P.E. & L.S.
BY
LIC. #15434 CHIEF, ENGINEERING SECTION
DATE JAN 22 1986 SERIAL NO. 654

NEW JERSEY DEPARTMENT OF THE TREASURY
DIVISION OF TAXATION
LOCAL PROPERTY AND PUBLIC UTILITY BRANCH
APPROVED AS A 1" MAP PURSUANT TO THE
PROVISIONS OF CHAPTER 175, LAWS OF 1914, ETC.
FOR THE DIRECTOR, DIVISION OF TAXATION

J. H. Heston P.E. & L.S.
BY
LIC. #15434 CHIEF, ENGINEERING SECTION
DATE APR 16 1979 SERIAL NO. 578

TAX MAP
TOWNSHIP OF HAMILTON
ATLANTIC COUNTY, NEW JERSEY
SCALE: 1" = 400' DATE: JUNE 1, 1977

RONALD J. PRICE
PLEASANTVILLE, N.J.
N.J. LICENSE NO. 13901

* EXEMPT TOWNSHIP OF HAMILTON

REV. BY CHURCHILL - MAY 2002, FEB. 2008

WPHA 4-19-85
REVISIONS

See Adjoining Sheet 26

REV. BY ALEXANDER M. CHURCHILL ASSOC. - JAN. '95

See Adjoining Sheet 28

See Adjoining Sheet 30