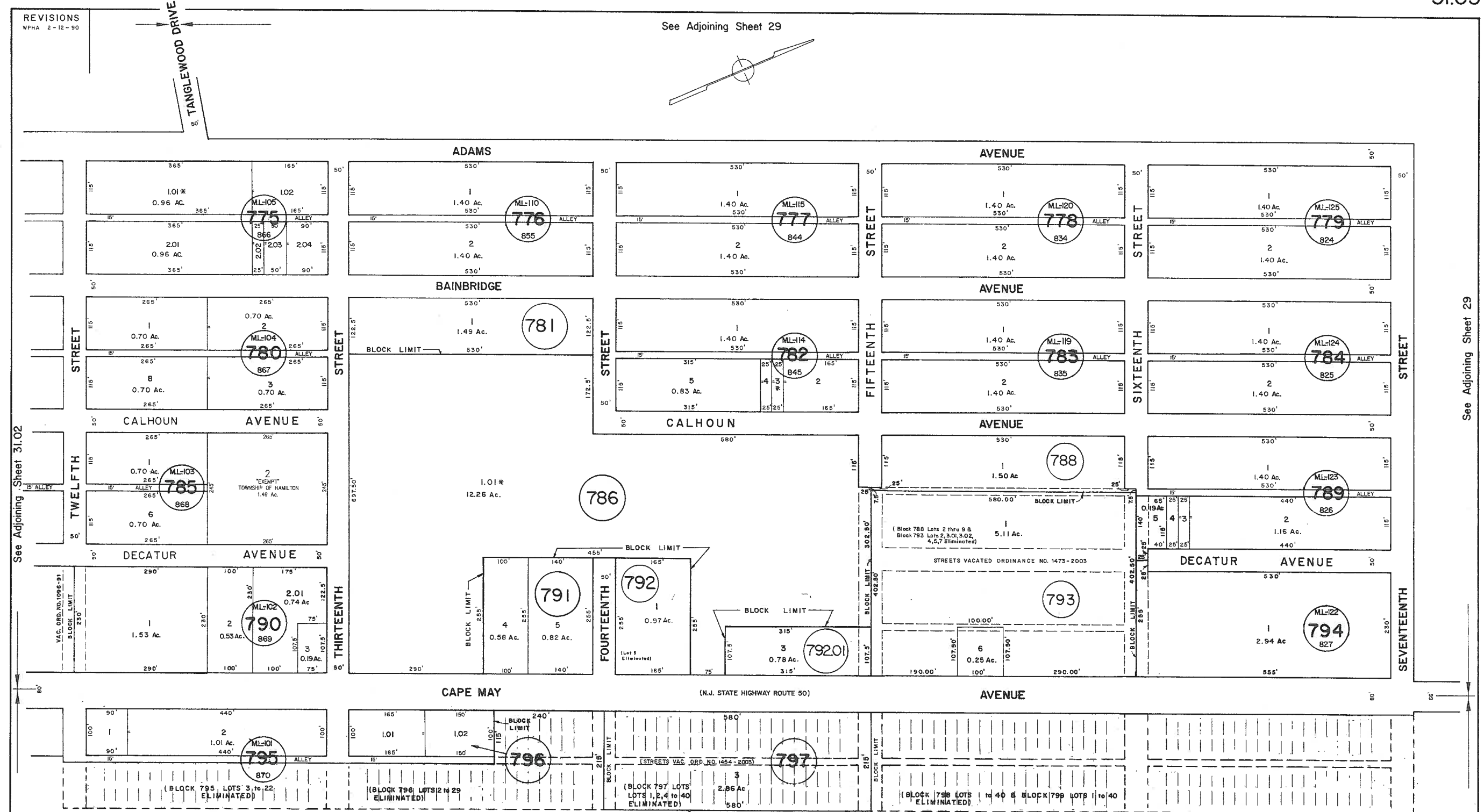
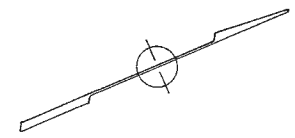


REVISIONS  
WPHA 2-12-90

See Adjoining Sheet 29



See Adjoining Sheet 31.02

See Adjoining Sheet 29

DATE	LS NAME	LIC No.
4-27-98	MARTIN F. TIRELLA	LS 27477
3-12-2013	CRAG F. REMINGTON	LS 23824
1-13-2014	CHARLES E. ADAMSON	LS 42627

NOTE: LETTERS "ML" INDICATE BLOCK NUMBERS ON MAP OF MAYS LANDING BY DANIEL B. FRAZIER COMPANY.  
\* EXEMPT TOWNSHIP OF HAMILTON

SEE BLOCK 827 LOT 1  
(Sheet 31)

SEE BLOCK 827 LOT 1.01  
(Sheet 31)

JUNE 2004, JUNE 2006, FEB. 2008  
REV. BY CHURCHILL - DEC. '99, MAY 2003, DEC. 2003, FEB. 2004

See Adjoining Sheet 31

NEW JERSEY DEPARTMENT OF THE TREASURY  
DIVISION OF TAXATION  
LOCAL PROPERTY AND PUBLIC UTILITY BRANCH  
APPROVED AS A TAX MAP PURSUANT TO THE  
PROVISIONS OF CHAPTER 175, LAWS OF 1983, ETC.  
FOR THE DIRECTOR, DIVISION OF TAXATION

*John J. Anthony*  
BY: P.E. & L.S.  
L.C. #15431 CHIEF, ENGINEERING SECTION  
JAN 22 1996 SERIAL NO. 654

NEW JERSEY DEPARTMENT OF THE TREASURY  
DIVISION OF TAXATION  
LOCAL PROPERTY AND PUBLIC UTILITY BRANCH  
APPROVED AS A TAX MAP PURSUANT TO THE  
PROVISIONS OF CHAPTER 175, LAWS OF 1983, ETC.  
FOR THE DIRECTOR, DIVISION OF TAXATION

*John J. Anthony*  
BY: P.E. & L.S.  
L.C. #15431 CHIEF, ENGINEERING SECTION  
MAR 16 1996 SERIAL NO. 578

**TAX MAP**  
**TOWNSHIP OF HAMILTON**  
ATLANTIC COUNTY, NEW JERSEY  
SCALE: 1" = 100' DATE: JUNE 1, 1977

RONALD J. PRICE  
PLEASANTVILLE, N.J.  
N.J. LICENSE NO. 18901