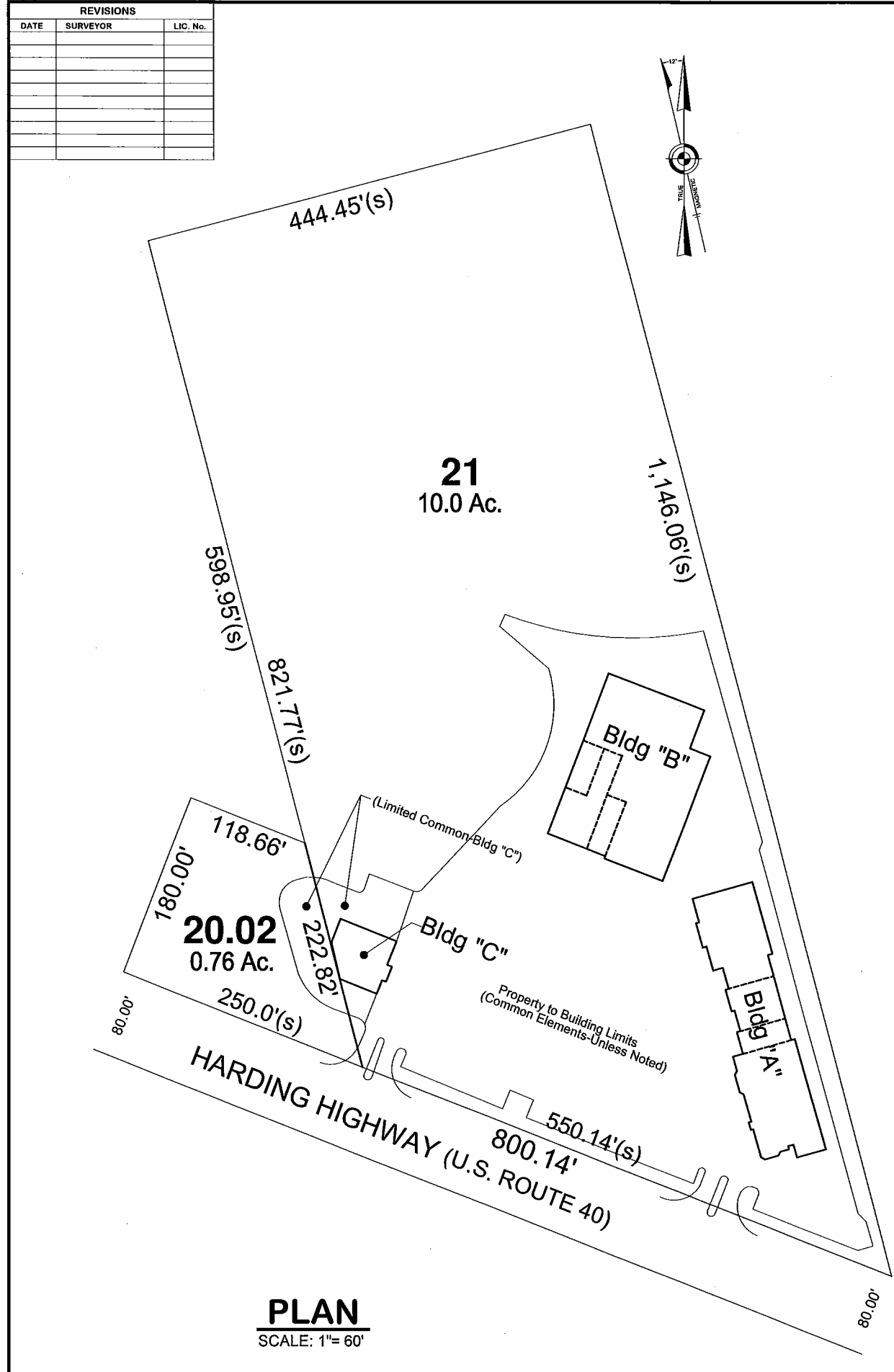
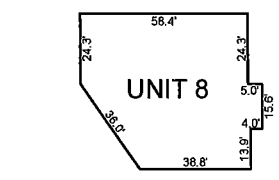
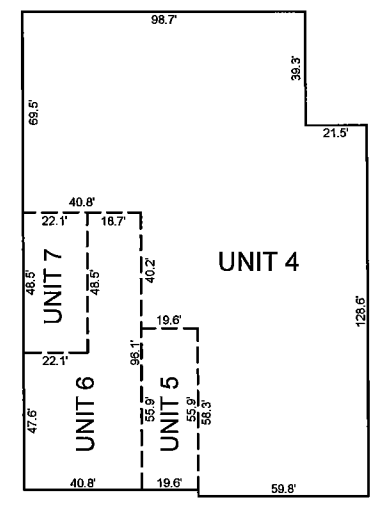
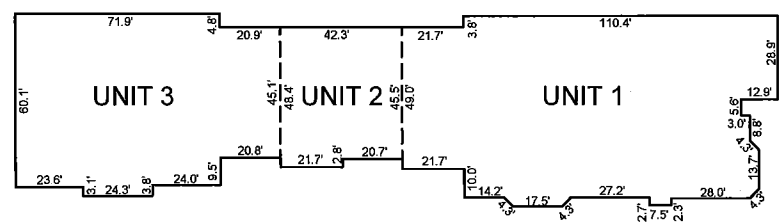


REVISIONS		
DATE	SURVEYOR	LIC. No.



PLAN
SCALE: 1"= 60'



NOTE: Building Dimensions Approximated.

BUILDING DETAIL
SCALE: 1"= 30'

LOTS 21 & 21.02 COVERAGE CALCULATIONS			
BUILDING	UNIT	AREA	PERCENTAGE INTEREST OF COMMON ELEMENTS
"A"	Unit 1(E.1)	7,800.0 sf	19.9%
"A"	Unit 2(E.2)	2,049.5 sf	5.3%
"A"	Unit 3(E.3)	5,437.0 sf	13.9%
"B"	Unit 4(E.4)	14,575.3 sf	37.2%
"B"	Unit 5(E.5)	1,111.3 sf	2.8%
"B"	Unit 6(E.6)	2,853.3 sf	7.3%
"B"	Unit 7(E.7)	1,059.9 sf	2.7%
"C"	Unit 8(E.8)	4,268.9 sf	10.9%
TOTALS		39,155.2 sf	100.0%

Building designation per reference Survey (See note above)

NOTES:
 1. THIS SHEET HAS BEEN DRAWN USING A COMPUTER AIDED DRAFTING AND DESIGN.
 2. OUTBOUND, CONDOMINIUM AND AREA CALCULATIONS GRAPHICALLY SHOWN PER PLAN OF "CONDOMINIUM SURVEY, TAX LOTS 20.02 & 21, BOCK 996, TOWNSHIP OF HAMILTON, ATLANTIC COUNTY, NEW JERSEY" AS PREPARED BY HYLAND DESIGN GROUP INC., THOMAS A. PRENDERGAST, P.L.S. (N.J. Lic. No.37604), DATED SEPT. 7, 2007.

TAX MAP
TOWNSHIP OF HAMILTON
 ATLANTIC COUNTY NEW JERSEY
 SCALE: AS SHOWN DATE: MARCH 10, 2017

DIXON ASSOCIATES
 335 E. JIMMIE LEEDS ROAD,
 GALLOWAY, N.J. 08205
THOMAS A. PRENDERGAST, P.L.S.
 N.J. LIC. No. 37604