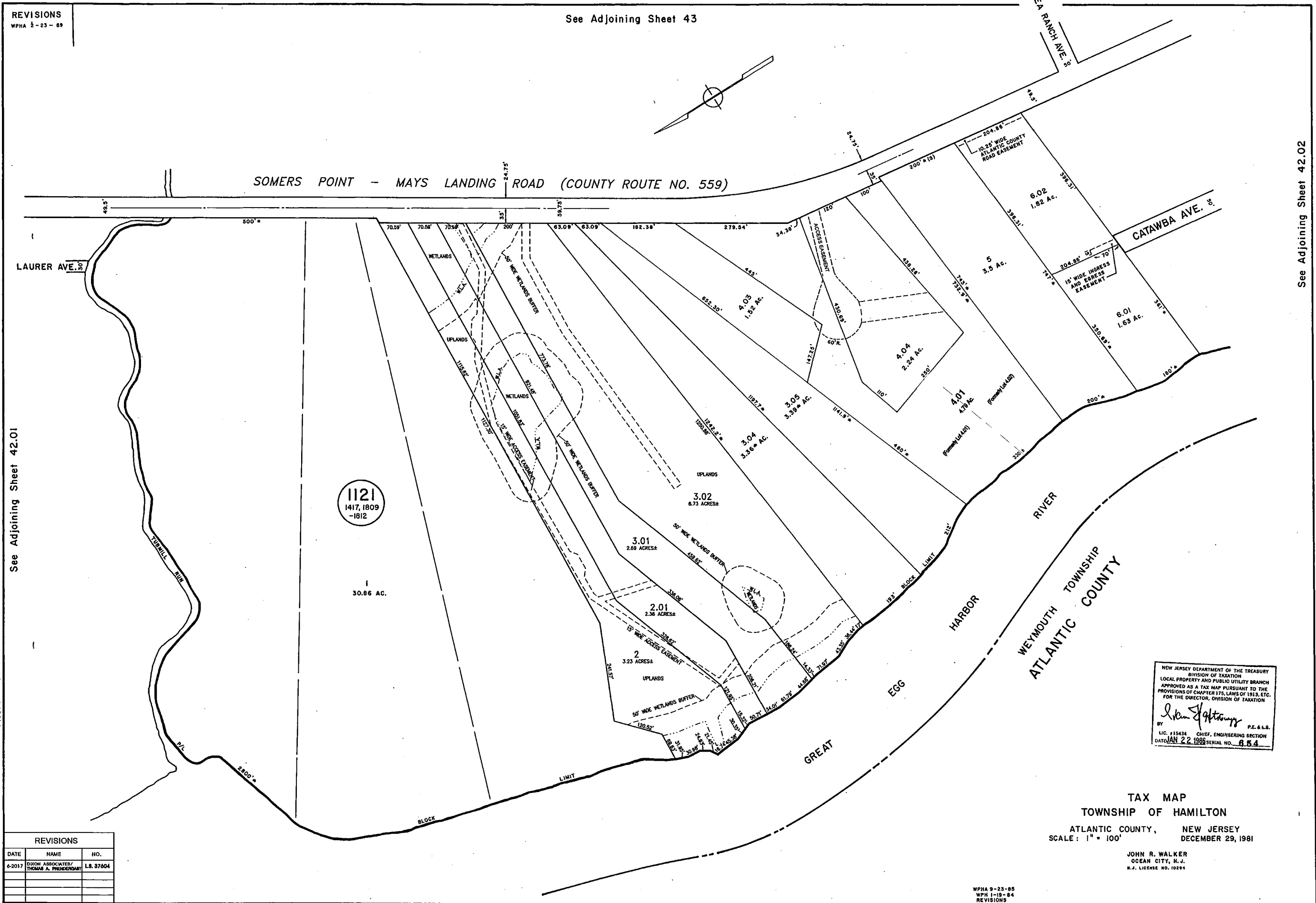


REVISIONS
WPHA 2-23-89

See Adjoining Sheet 43

See Adjoining Sheet 42.01

See Adjoining Sheet 42.02



REVISIONS		
DATE	NAME	NO.
6-2017	DIXON ASSOCIATES/ THOMAS A. PRENDERGAST	LS 87604

REVISED BY REMINGTON & VERNICK ENGINEERS - 10-24-2010
REVISED BY REMINGTON & VERNICK ENGINEERS - 9-3-2014

NEW JERSEY DEPARTMENT OF THE TREASURY
DIVISION OF TAXATION
LOCAL PROPERTY AND PUBLIC UTILITY BRANCH
APPROVED AS A TAX MAP PURSUANT TO THE
PROVISIONS OF CHAPTER 175, LAWS OF 1913, ETC.
FOR THE DIRECTOR, DIVISION OF TAXATION

John R. Walker P.E. & L.S.
BY
LIC. #15434 CHIEF, ENGINEERING SECTION
DATE: JAN 22 1988 SERIAL NO. 854

TAX MAP
TOWNSHIP OF HAMILTON
ATLANTIC COUNTY, NEW JERSEY
SCALE: 1" = 100'
DECEMBER 29, 1981

JOHN R. WALKER
OCEAN CITY, N.J.
N.J. LICENSE NO. 10294

WPHA 9-23-85
WPH 1-19-84
REVISIONS