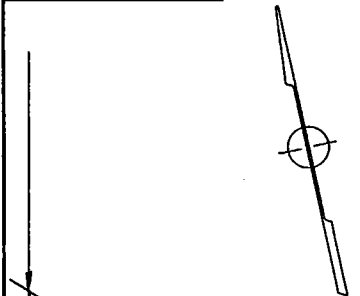
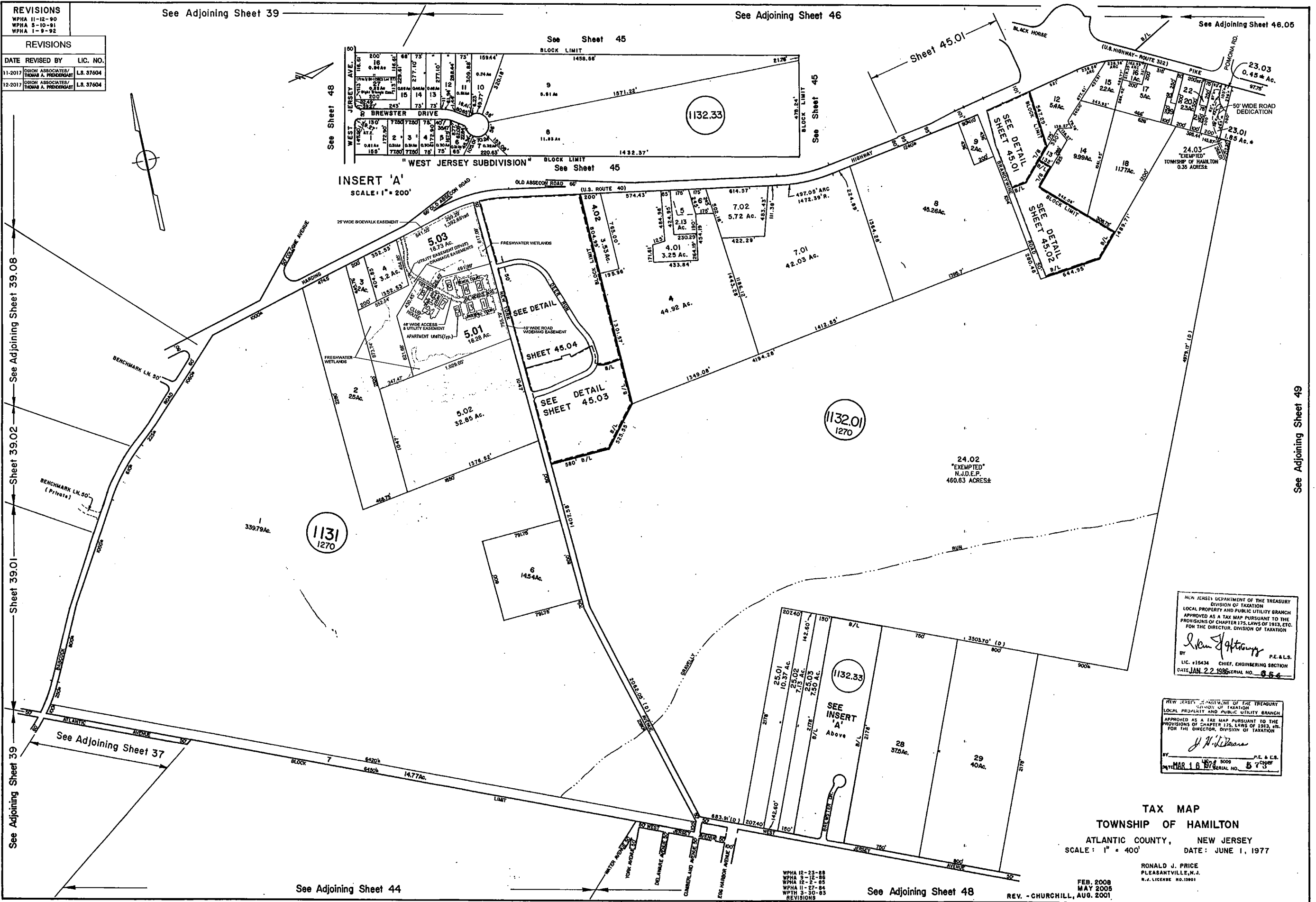


REVISIONS		
WPHA 11-12-90		
WPHA 5-10-91		
WPHA 1-9-92		
REVISIONS		
DATE	REVISED BY	LIC. NO.
11-2017	DIION ASSOCIATES/ THOMAS A. PRIBERNGAT	L.S. 37604
12-2017	DIION ASSOCIATES/ THOMAS A. PRIBERNGAT	L.S. 37604



INSERT 'A'
SCALE: 1" = 200'

NEW JERSEY DEPARTMENT OF THE TREASURY
DIVISION OF TAXATION
LOCAL PROPERTY AND PUBLIC UTILITY BRANCH
APPROVED AS A TAX MAP PURSUANT TO THE
PROVISIONS OF CHAPTER 175, LAWS OF 1913, ETC.
FOR THE DIRECTOR, DIVISION OF TAXATION
John J. Heston
BY: P.E. & L.S.
LIC. #15434 CHIEF, ENGINEERING SECTION
DATE: JAN 22 1986 SERIAL NO. 654

NEW JERSEY DEPARTMENT OF THE TREASURY
DIVISION OF TAXATION
LOCAL PROPERTY AND PUBLIC UTILITY BRANCH
APPROVED AS A TAX MAP PURSUANT TO THE
PROVISIONS OF CHAPTER 175, LAWS OF 1913, ETC.
FOR THE DIRECTOR, DIVISION OF TAXATION
J. P. Williams
BY: P.E. & L.S.
LIC. # 5005 CHIEF
DATE: MAR 18 1978 SERIAL NO. 573

TAX MAP
TOWNSHIP OF HAMILTON
ATLANTIC COUNTY, NEW JERSEY
SCALE: 1" = 400' DATE: JUNE 1, 1977

RONALD J. PRICE
PLEASANTVILLE, N.J.
N.J. LICENSE NO. 10801

WPHA 12-23-88
WPHA 9-12-88
WPHA 12-2-88
WPHA 11-27-88
WPTH 3-30-85
REVISIONS

REV. - CHURCHILL, AUG. 2001
REV. - ALEXANDER M. CHURCHILL ASSOC. MAY, 1994
REV. BY REMINGTON & VERNICK ENGINEERS - 10-4-2013
REV. HAROLD NOON-HUPLS 3014-1040-16

FEB. 2008
MAY 2008
REV. - CHURCHILL, AUG. 2001

See Adjoining Sheet 49

See Adjoining Sheet 39

See Adjoining Sheet 44

See Adjoining Sheet 48