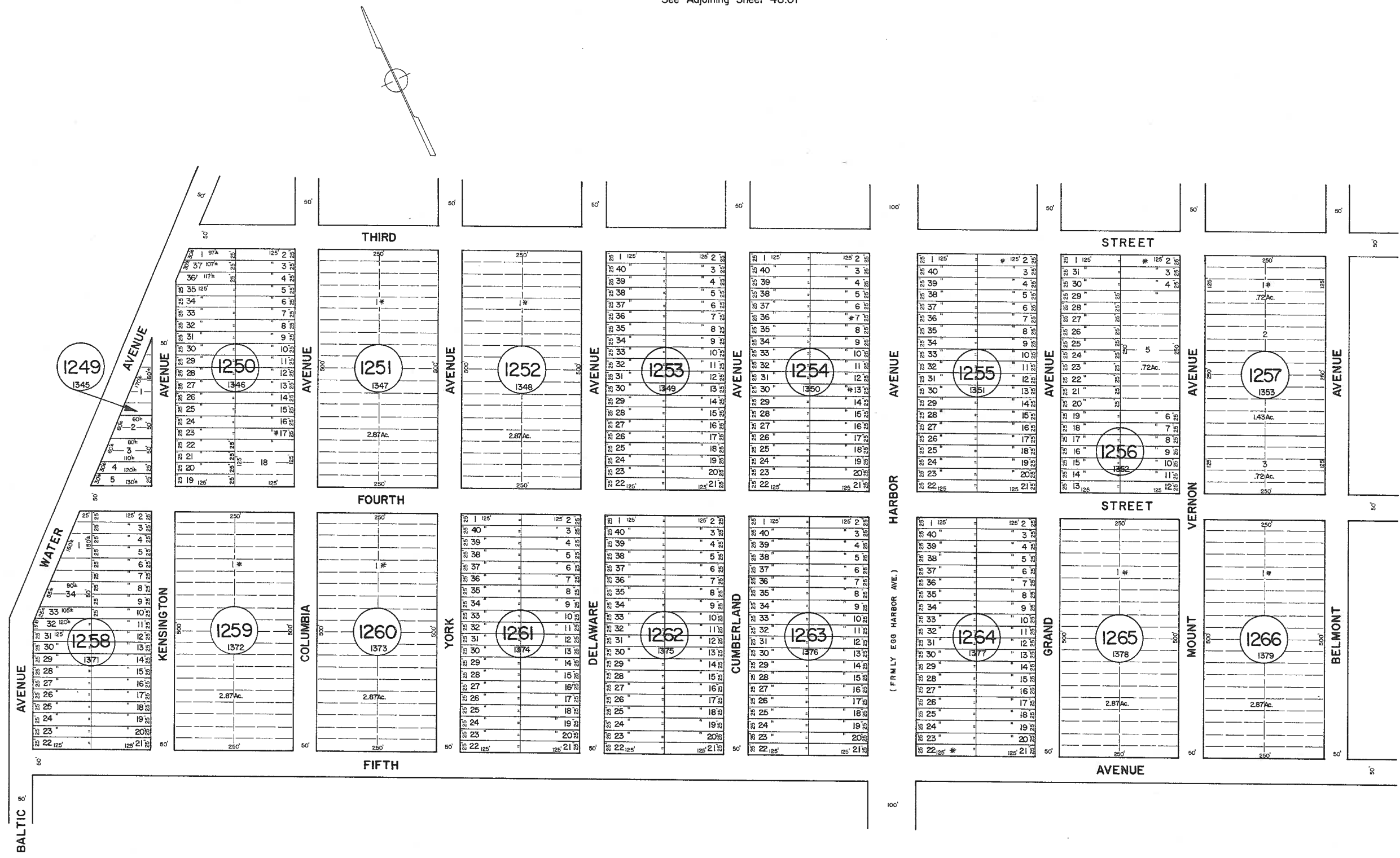


See Adjoining Sheet 48.01

See Adjoining Sheet 44

See Adjoining Sheet 48.05



* EXEMPT TOWNSHIP OF HAMILTON

NEW JERSEY DEPARTMENT OF THE TREASURY
 DIVISION OF TAXATION
 LOCAL PROPERTY AND PUBLIC UTILITY BRANCH
 APPROVED AS A TAX MAP PURSUANT TO THE
 PROVISIONS OF CHAPTER 175, LAWS OF 1913, ETC.
 FOR THE DIRECTOR, DIVISION OF TAXATION

John J. Gattuso
 P.E. & L.S.
 LIC. #15434 CHIEF, ENGINEERING SECTION
 DATE: JAN 22 1988 SERIAL NO. 054

NEW JERSEY DEPARTMENT OF THE TREASURY
 DIVISION OF TAXATION
 LOCAL PROPERTY AND PUBLIC UTILITY BRANCH
 APPROVED AS A TAX MAP PURSUANT TO THE
 PROVISIONS OF CHAPTER 175, LAWS OF 1913, ETC.
 FOR THE DIRECTOR, DIVISION OF TAXATION

J. H. Wilson
 P.E. & L.S.
 LIC. # 5009 CHIEF
 DATE: MAR 16 1977 SERIAL NO. 573

TAX MAP
 TOWNSHIP OF HAMILTON
 ATLANTIC COUNTY, NEW JERSEY
 SCALE: 1" = 100' DATE: JUNE 1, 1977

RONALD J. PRICE
 PLEASANTVILLE, N.J.
 N.J. LICENSE NO. 15901

See Adjoining Sheet 48

REV. BY ALEXANDER M. CHURCHILL ASSOC. - JAN. '95

REV. BY CHURCHILL - FEB. 2008