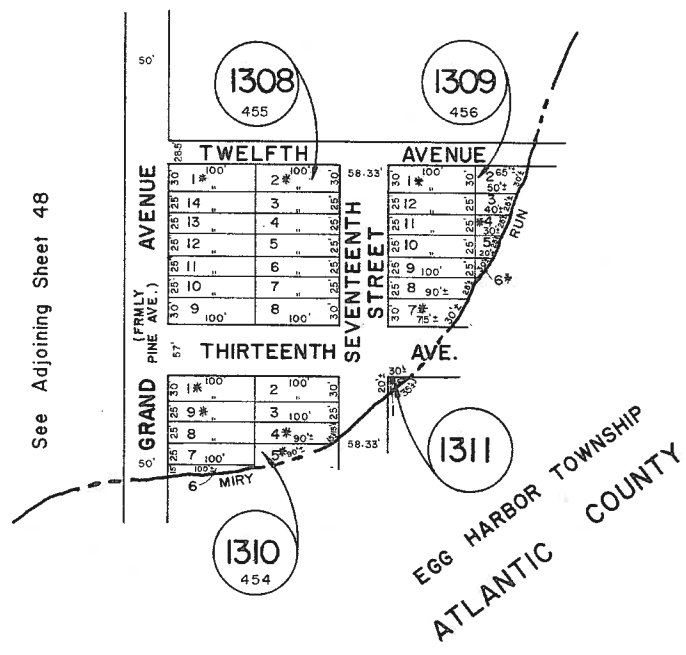


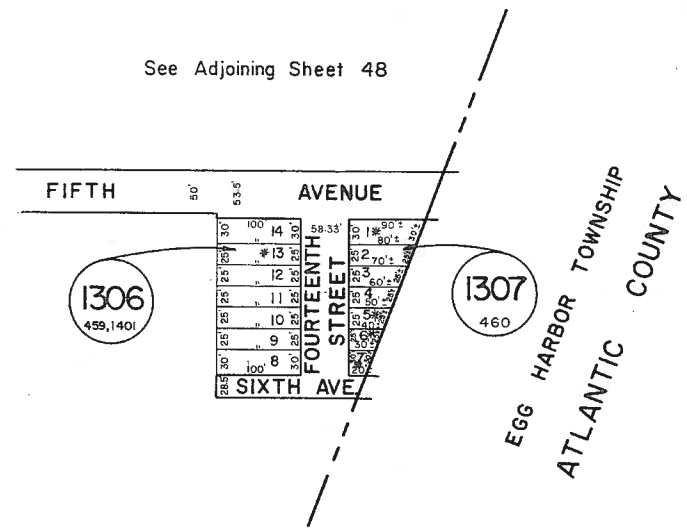
See Adjoining Sheet 48



See Adjoining Sheet 48

See Adjoining Sheet 48

See Adjoining Sheet 48



* EXEMPT TOWNSHIP OF HAMILTON

NEW JERSEY DEPARTMENT OF THE TREASURY
 DIVISION OF TAXATION
 LOCAL PROPERTY AND PUBLIC UTILITY BRANCH
 APPROVED AS A TAX MAP PURSUANT TO THE
 PROVISIONS OF CHAPTER 175, LAWS OF 1913, ETC.
 FOR THE DIRECTOR, DIVISION OF TAXATION

BY *J. N. Williams* P.E. & L.S.
 LIC. 15434 CHIEF, ENGINEERING SECTION
 DATE: JAN 22 1986 SERIAL NO. 654

NEW JERSEY DEPARTMENT OF THE TREASURY
 DIVISION OF TAXATION
 LOCAL PROPERTY AND PUBLIC UTILITY BRANCH
 APPROVED AS A TAX MAP PURSUANT TO THE
 PROVISIONS OF CHAPTER 175, LAWS OF 1913, ETC.
 FOR THE DIRECTOR, DIVISION OF TAXATION

BY *J. N. Williams* P.E. & L.S.
 LIC. 15434 CHIEF, ENGINEERING SECTION
 DATE: MAR 16 1978 SERIAL NO. 578

TAX MAP
TOWNSHIP OF HAMILTON
 ATLANTIC COUNTY, NEW JERSEY
 SCALE: 1" = 100' DATE: JUNE 1, 1977

RONALD J. PRICE
 PLEASANTVILLE, N.J.
 N.J. LICENSE NO. 13901

REV. BY CHURCHILL - FEB. 2008
REV. BY ALEXANDER M. CHURCHILL ASSOC. - JAN '95