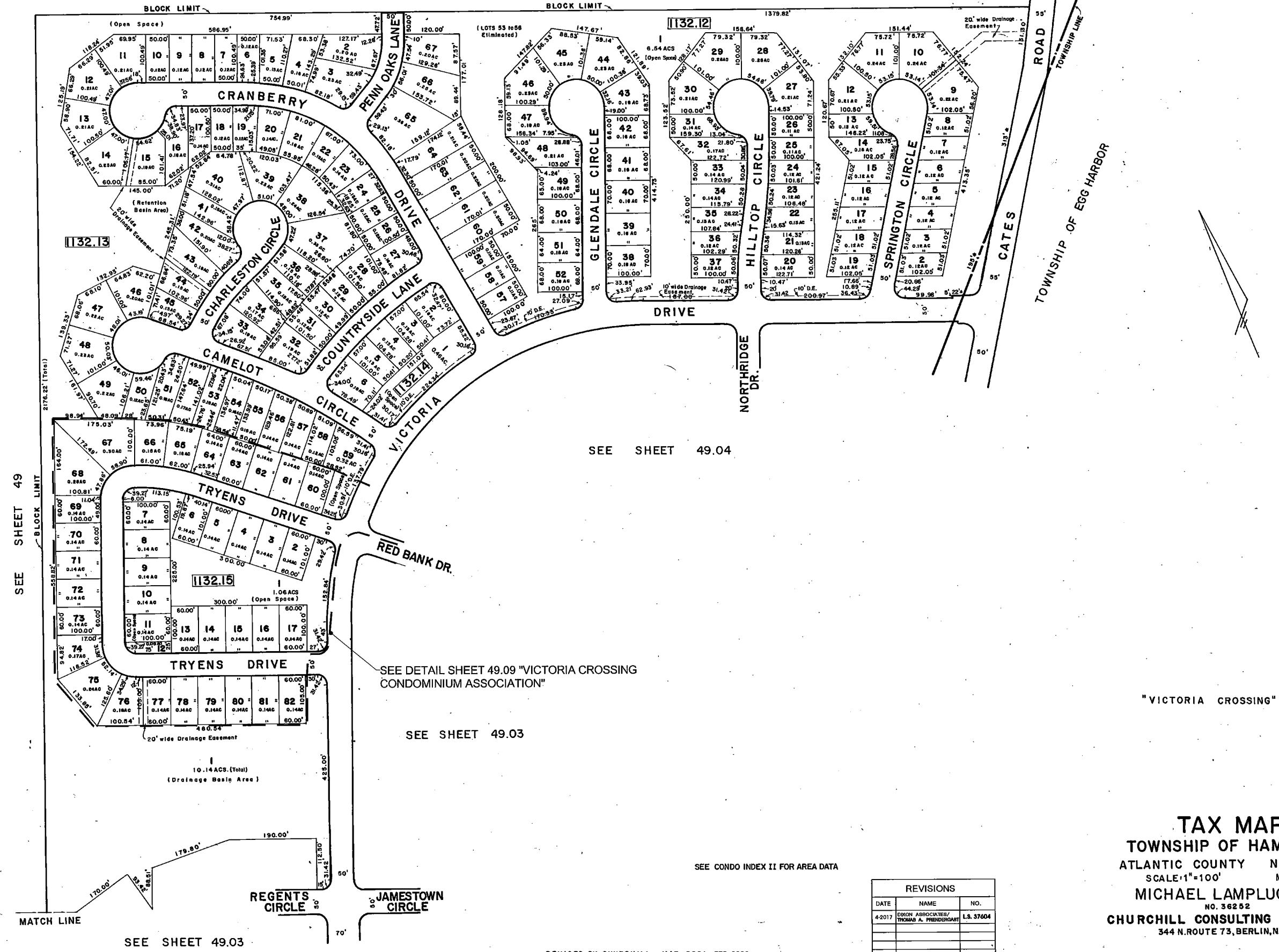


SEE SHEET 49

SEE SHEET 49



SEE SHEET 49.04

SEE DETAIL SHEET 49.09 "VICTORIA CROSSING CONDOMINIUM ASSOCIATION"

SEE SHEET 49.03

"VICTORIA CROSSING"

SEE CONDO INDEX II FOR AREA DATA

REVISIONS		
DATE	NAME	NO.
4-2017	DIKON ASSOCIATES/ THOMAS A. PRENDERGAST	LS 37604

TAX MAP
TOWNSHIP OF HAMILTON
 ATLANTIC COUNTY NEW JERSEY
 SCALE: 1"=100' MAY, 1999
MICHAEL LAMPLUGH, L.S.
 NO. 36252
CHURCHILL CONSULTING ENGINEERS
 344 N. ROUTE 73, BERLIN, N.J. 08009