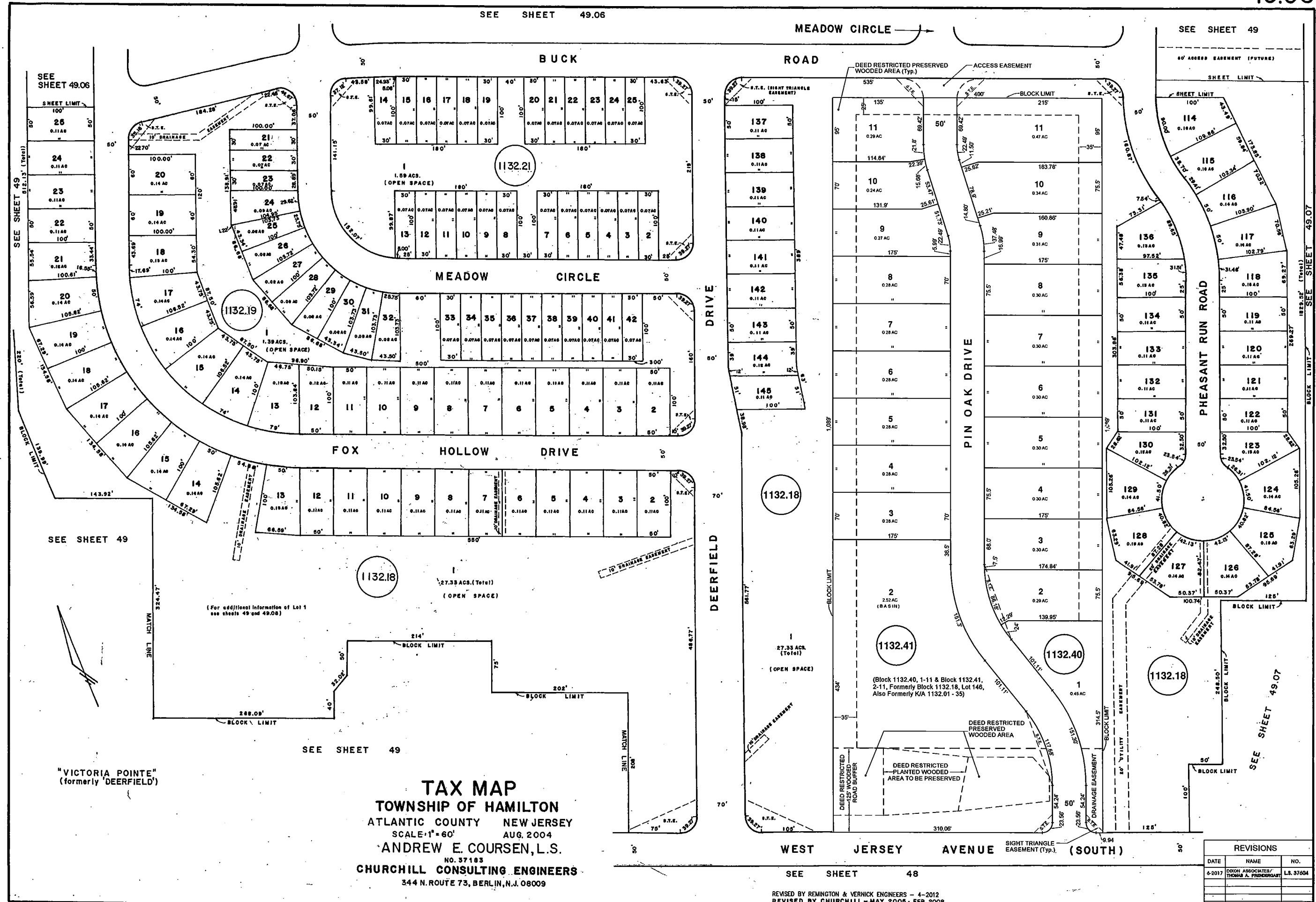


SEE SHEET 49.06

SEE SHEET 49



SEE SHEET 49.06

SEE SHEET 49

SEE SHEET 49

"VICTORIA POINTE"
(formerly DEERFIELD)

TAX MAP
TOWNSHIP OF HAMILTON
 ATLANTIC COUNTY NEW JERSEY
 SCALE: 1"=60' AUG. 2004
 ANDREW E. COURSEN, L.S.
 NO. 37183
CHURCHILL CONSULTING ENGINEERS
 344 N. ROUTE 73, BERLIN, N.J. 08009

WEST JERSEY AVENUE (SOUTH)

SEE SHEET 48

REVISED BY REMINGTON & VERNICK ENGINEERS - 4-2012
REVISED BY CHURCHILL - MAY 2005, FEB. 2008

REVISIONS		
DATE	NAME	NO.
6-2017	DIXON ASSOCIATES/ THOMAS A. PRINDEGANT	L.S. 37604