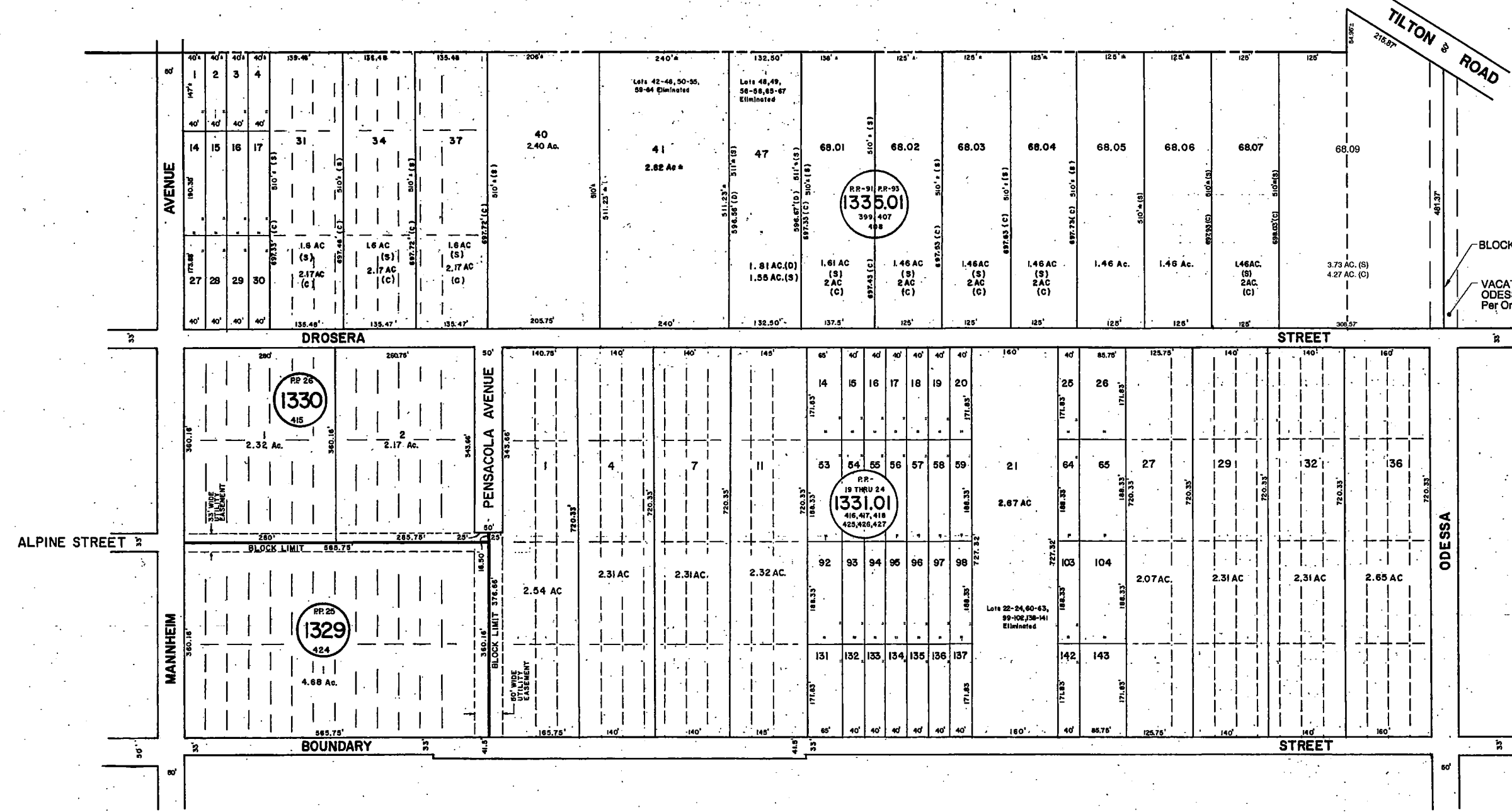
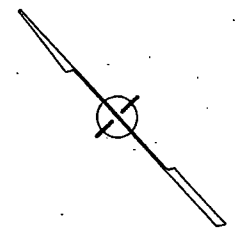


REVISIONS		
DATE	REVISED BY	LIC. NO.
11-2017	OXON ASSOCIATES/ THOMAS A. PREDERGAST	L.S. 37604
07-2016	ENGINEERING DESIGN ASSOC./ THOMAS A. PREDERGAST	L.S. 37604

ATLANTIC COUNTY
GALLOWAY TOWNSHIP



See Adjoining Sheet 47.03

See Adjoining Sheet 50.02

NOTE: LETTERS "RP" INDICATE BLOCKS ON MAP OF POMONA, BY POMONA LAND CO.

NEW JERSEY DEPARTMENT OF THE TREASURY
DIVISION OF TAXATION
LOCAL PROPERTY AND PUBLIC UTILITY BRANCH
APPROVED AS A TAX MAP PURSUANT TO THE
PROVISIONS OF CHAPTER 175, LAWS OF 1919, ETC.
FOR THE DIRECTOR, DIVISION OF TAXATION
Alan J. Halpin
BY: P.E. & L.S.
LIC. 115434 CHIEF, ENGINEERING SECTION
DATE: JAN 22 1995 SERIAL NO. 654

NEW JERSEY DEPARTMENT OF THE TREASURY
DIVISION OF TAXATION
LOCAL PROPERTY AND PUBLIC UTILITY BRANCH
APPROVED AS A TAX MAP PURSUANT TO THE
PROVISIONS OF CHAPTER 175, LAWS OF 1919, ETC.
FOR THE DIRECTOR, DIVISION OF TAXATION
J. H. Wilson
BY: P.E. & L.S.
LIC. 5008 CHIEF
DATE: MAR 1 6 1978 SERIAL NO. 578

TAX MAP
TOWNSHIP OF HAMILTON
ATLANTIC COUNTY, NEW JERSEY
SCALE: 1" = 100' DATE: JUNE 1, 1977

RONALD G. PRICE
PLEASANTVILLE, N.J.
N.J. LICENSE NO. 18901