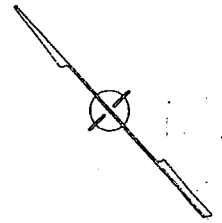
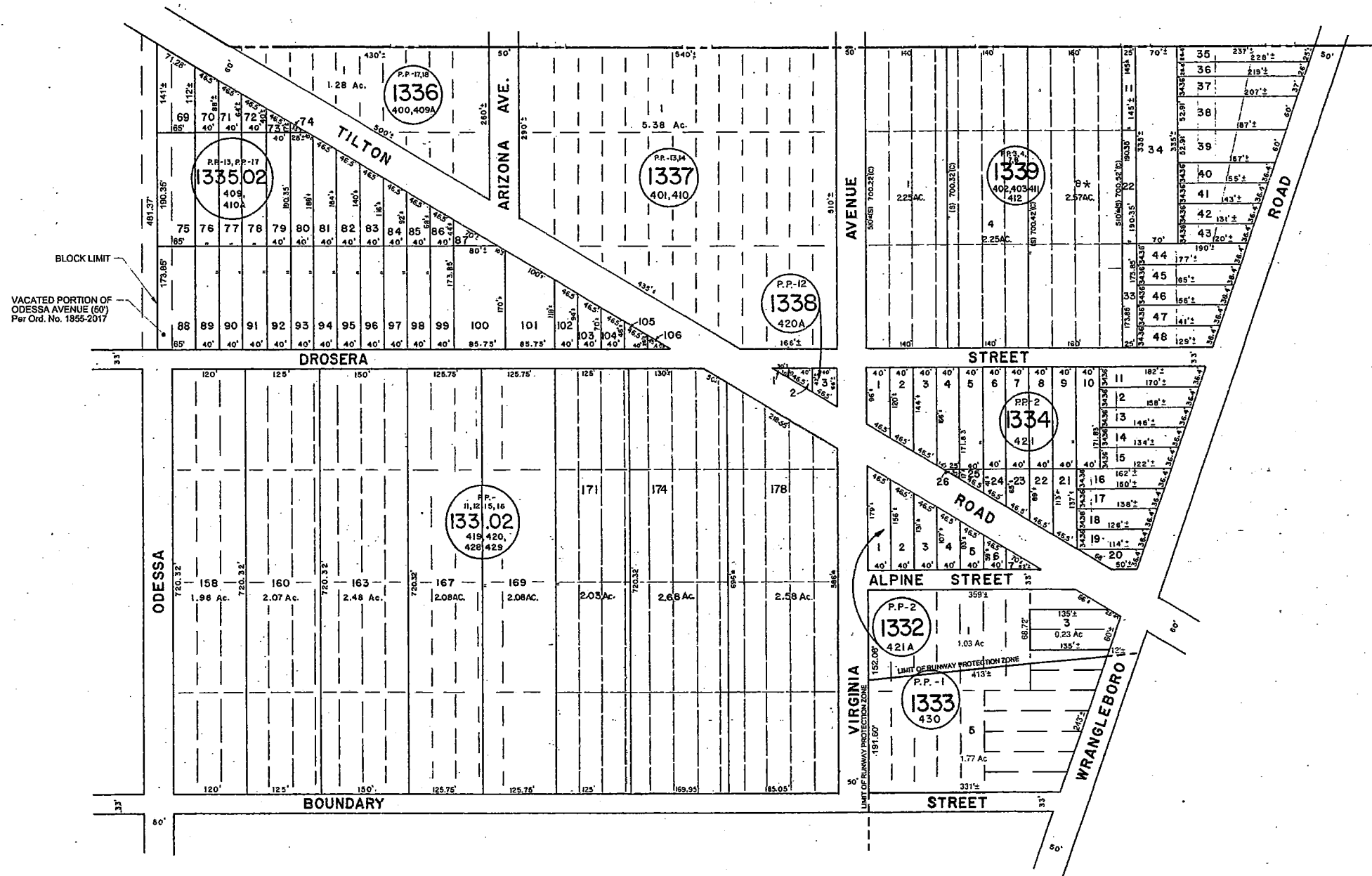


REVISIONS		
DATE	REVISED BY	LIC. NO.
11-2017	DIXON ASSOCIATES/ THOMAS A. PRENDERGAST	L.S. 37604
2-2018	DIXON ASSOCIATES/ THOMAS A. PRENDERGAST	L.S. 37604
4-2018	ENGINEERING DESIGN ASSOC. THOMAS A. PRENDERGAST	L.S. 37604
3-21-18	ENGINEERING DESIGN ASSOC. THOMAS A. PRENDERGAST	L.S. 37604

ATLANTIC COUNTY
GALLOWAY TOWNSHIP



See Adjoining Sheet 50.01



See Adjoining Sheet 50

NOTE: LETTERS "P.P." INDICATE: BLOCKS ON MAP OF POMONA BY POMONA LAND CO.
*EXEMPT TOWNSHIP OF HAMILTON

NEW JERSEY DEPARTMENT OF BANKING
DIVISION OF TAXATION
LOCAL PROPERTY AND PUBLIC UTILITY BRANCH
APPROVED AS A TAX MAP PURSUANT TO THE
PROVISIONS OF CHAPTER 124, LAWS OF 1913, ETC.
FOR THE DIRECTOR, DIVISION OF TAXATION
John J. Harty
BY: P.E. & L.S.
LIC. 218432 CHIEF, ENGINEERING SECTION
DATE: JAN 22 1986 SERIAL NO. 854

NEW JERSEY DEPARTMENT OF THE TREASURY
DIVISION OF TAXATION
LOCAL PROPERTY AND PUBLIC UTILITY BRANCH
APPROVED AS A TAX MAP PURSUANT TO THE
PROVISIONS OF CHAPTER 124, LAWS OF 1913, ETC.
FOR THE DIRECTOR, DIVISION OF TAXATION
Ronald J. Price
BY: P.E. & L.S.
MAR 16 1986 5009
CHIEF
SERIAL NO. 573

TAX MAP
TOWNSHIP OF HAMILTON
ATLANTIC COUNTY, NEW JERSEY
SCALE: 1" = 100'
DATE: JUNE 1, 1977

RONALD J. PRICE
PLEASANTVILLE, N.J.
N.J. LICENSE NO. 15901

See Adjoining Sheet 50

REVISED BY CHURCHILL: FEB. 2008