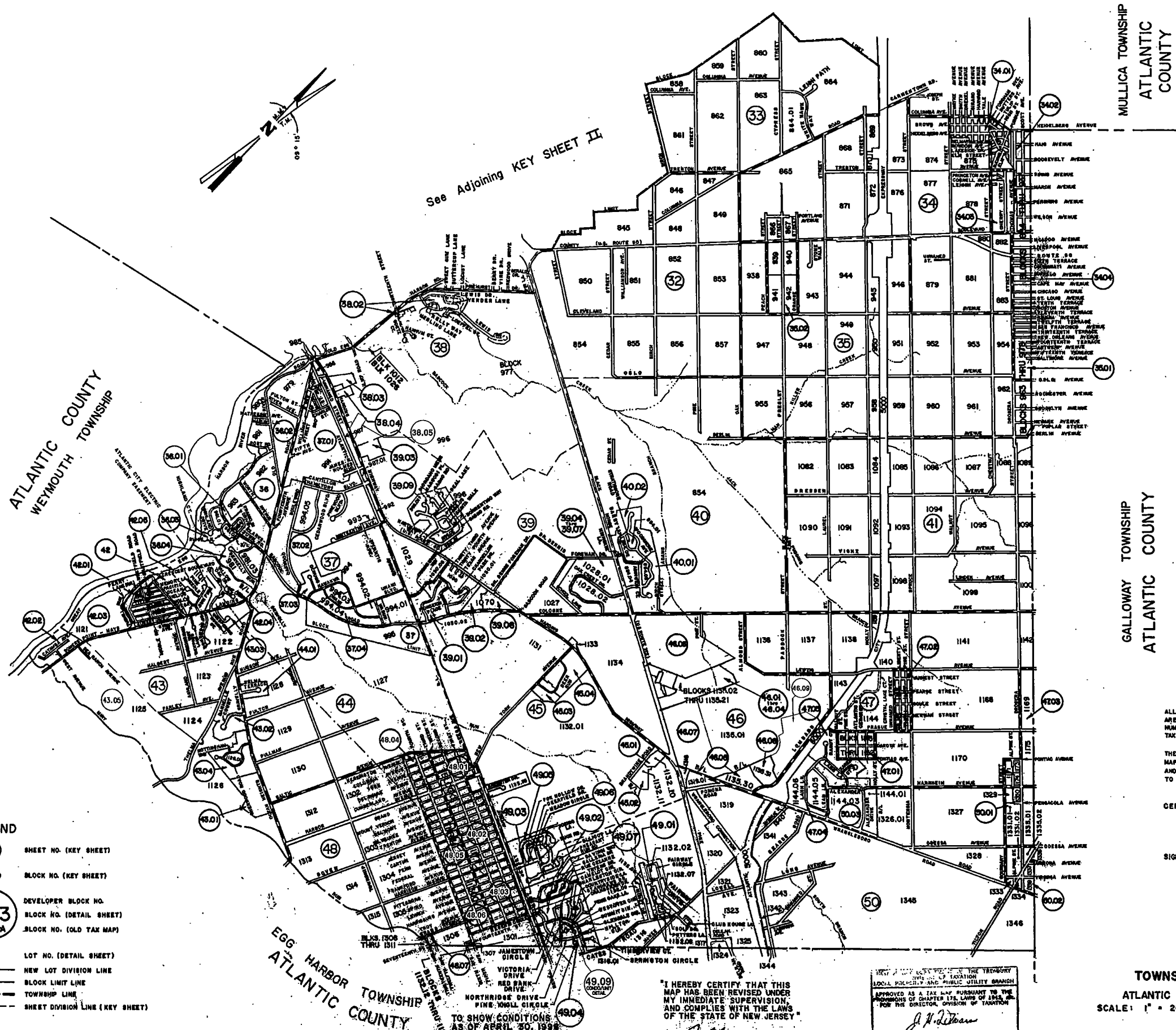


REVISIONS		
DATE	NAME	NO.
12-20-85	JOHN R. WALKER	10294
6-16-86	JOHN R. WALKER	10294
12-24-86	JOHN R. WALKER	10294
6-8-87	JOHN R. WALKER	10294
12-3-87	JOHN R. WALKER	10294
6-15-88	JOHN R. WALKER	10294
12-21-88	JOHN R. WALKER	10294
6-8-89	JOHN R. WALKER	10294
12-29-89	JOHN R. WALKER	10294
5-22-90	JOHN R. WALKER	10294
11-12-90	JOHN R. WALKER	10294
5-10-91	JOHN R. WALKER	10294
11-12-91	JOHN R. WALKER	10294
7-1-92	JOHN R. WALKER	10294
12-30-92	JOHN R. WALKER	10294
4-30-96	JOHN R. WALKER	10294
1-29-99	MARTIN F. TIRELLA	27477
11-3-08	CRAIG F. REMINGTON	23924
5-5-2011	CRAIG F. REMINGTON	23924
4-8-2012	CRAIG F. REMINGTON	23924
7-17-2014	CHARLES E. ADAMSON	42627
5-2017	ORION ASSOCIATES/ THOMAS A. PRENDERGAST	37604



NEW JERSEY DEPARTMENT OF THE TREASURY  
DIVISION OF TAXATION  
LOCAL PROPERTY AND PUBLIC UTILITY BRANCH  
APPROVED AS A TAX MAP PURSUANT TO THE  
PROVISIONS OF CHAPTER 175, LAWS OF 1984, ETC.  
FOR THE DIRECTOR, DIVISION OF TAXATION

BY *Ronald J. Price* P.E., R.S.  
LIC. #15434 CHIEF, ENGINEERING SECTION  
C/D/JAN 22 1999 SERIAL NO. 874

**NOTES**

ALL FORMER BLOCK AND LOT NUMBERS  
ARE SUPERSEDED BY THIS MAP, FOR OLD  
NUMBERS SEE REVISED HAMILTON TOWNSHIP  
TAX MAP DATE JULY, 1978

THE AREAS, BOUNDARIES AND DIMENSIONS SHOWN ON THIS  
MAP ARE DERIVED FROM GROUND SURVEYS, AERIAL SURVEYS  
AND RECORDED PLANS, MAPS, DEEDS AND WILLS AND ARE  
TO BE USED FOR ASSESSMENT PURPOSES ONLY.

**CERTIFICATION**

I HEREBY CERTIFY THAT THIS MAP AND THE SURVEY HAS  
BEEN MADE UNDER MY IMMEDIATE SUPERVISION AND  
COMPLIES WITH THE LAWS OF THE STATE OF NEW JERSEY.

SIGNATURE: *Ronald J. Price*  
RONALD J. PRICE R.E. & L.S.  
N.J. LICENSE NO. 11804

**TAX MAP**  
**TOWNSHIP OF HAMILTON**  
ATLANTIC COUNTY, NEW JERSEY  
SCALE: 1" = 2000' DATE: JUNE 1, 1977

RONALD J. PRICE  
PLEASANTVILLE, N.J.  
N.J. LICENSE NO. 11804

TO SHOW CONDITIONS AS OF 9-14-2015

**LEGEND**

⑦	SHEET NO. (KEY SHEET)
5000	BLOCK NO. (KEY SHEET)
78 203 296-A	DEVELOPER BLOCK NO. BLOCK NO. (DETAIL SHEET) BLOCK NO. (OLD TAX MAP)
2	LOT NO. (DETAIL SHEET)
—	NEW LOT DIVISION LINE
—	BLOCK LIMIT LINE
---	TOWNSHIP LINE
---	SHEET DIVISION LINE (KEY SHEET)

REV. BY REV. ENG. - AUGUST 2008 - 01217019

DATE	REVISIONS
JUNE 1985	
DECEMBER 1984	
JUNE 1984	
DECEMBER 1983	
JUNE 1983	
DECEMBER 1982	
DECEMBER 1981	
DECEMBER 1980	
DECEMBER 1979	
DECEMBER 1978	
APRIL 1978	

JAN. 2007, FEB. 2007, FEB. 2008  
MAY 2006, JUNE 2006, JULY 2006, OCT. 2006, NOV. 2006, FEB. 2006, OCT. 2006  
REV. BY CHURCHILL - JULY 2003, DEC. 2003, JULY 2004, AUG. 2004, SEPT. 2004, DEC. 2004, FEB. 2005  
REV. BY ALEXANDER M. CHURCHILL ASSOC. - JAN. '95, MAY 1999, REVISED BY CHURCHILL - OCT. 2001, MAY 2002, FEB. 2003

APRIL 2008, MAY 2008, DEC. 2008, FEB. 2009  
TO SHOW CONDITIONS AS OF APRIL 30, 1999

I HEREBY CERTIFY THAT THIS MAP HAS BEEN REVISED UNDER MY IMMEDIATE SUPERVISION AND COMPLIES WITH THE LAWS OF THE STATE OF NEW JERSEY.

*John R. Walker*  
JOHN R. WALKER  
N.J. LICENSE NO. 10294

NEW JERSEY DEPARTMENT OF THE TREASURY  
DIVISION OF TAXATION  
LOCAL PROPERTY AND PUBLIC UTILITY BRANCH  
APPROVED AS A TAX MAP PURSUANT TO THE  
PROVISIONS OF CHAPTER 175, LAWS OF 1984, ETC.  
FOR THE DIRECTOR, DIVISION OF TAXATION

BY *John R. Walker* P.E. & C.E.  
MAR 18 2009  
N.J. LICENSE NO. 10294