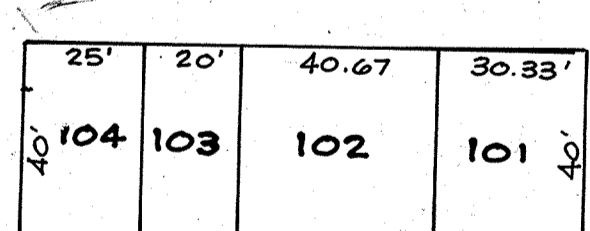
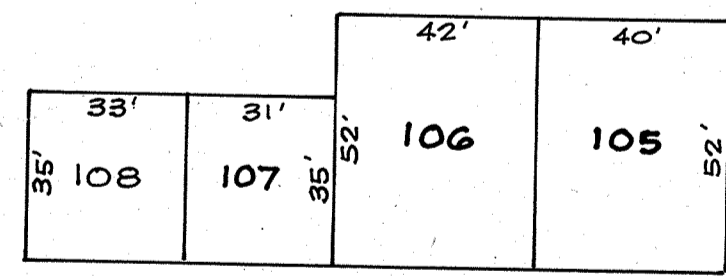
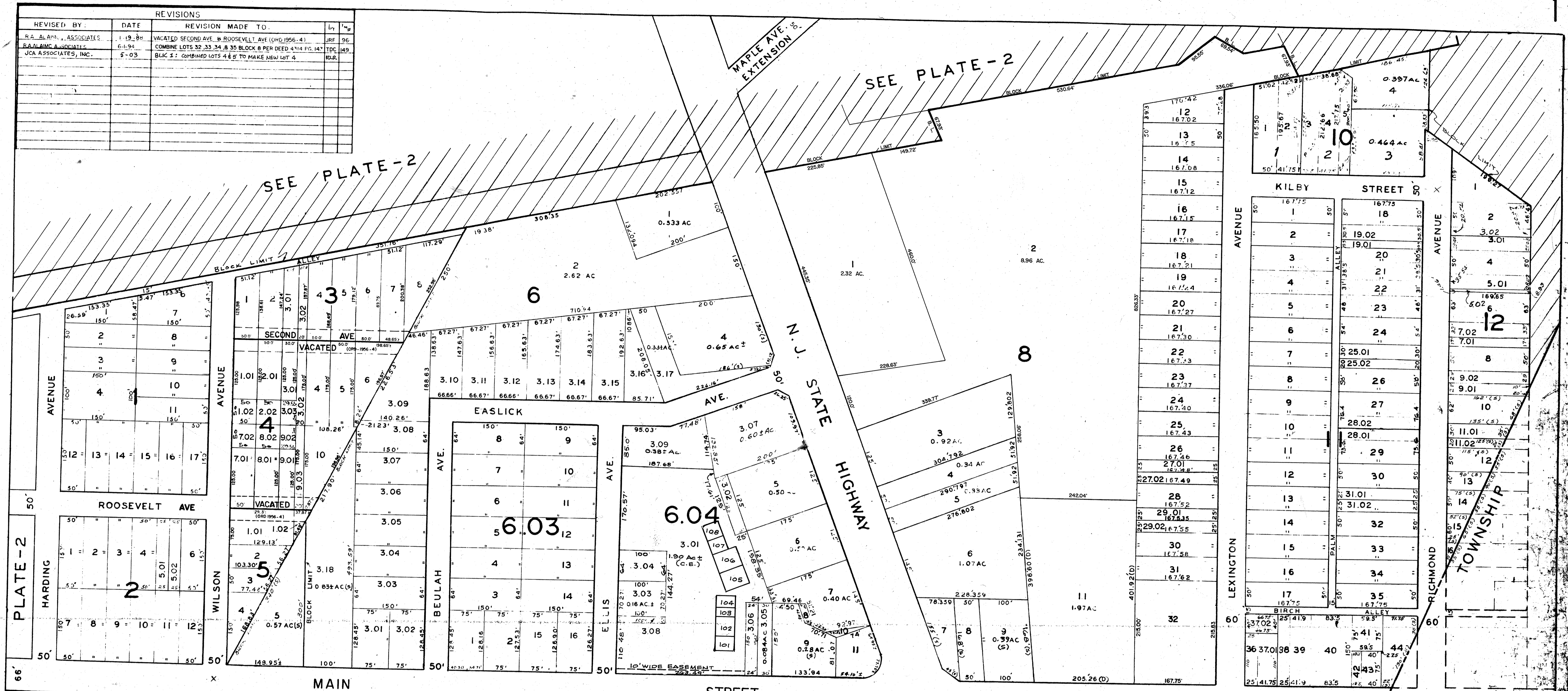


REVISIONS			
REVISED BY	DATE	REVISION MADE TO	BY
R.A. ALAIMI, ASSOCIATES	1-19-88	VACATED SECOND AVE. W. ROOSEVELT AVE (ORD. 1996-4)	JRF
R.A. ALAIMI ASSOCIATES	6-1-94	COMBINE LOTS 32, 33, 34 & 35 BLOCK 8 PER DEED 4-14 FIG. 147	JRF
JCA ASSOCIATES, INC.	5-03	BLK 1: COMBINED LOTS 4 & 5 TO MAKE NEW LOT 4	BLR



LUMBERTON TOWNSHIP
BURLINGTON COUNTY N.J.
PLOTTED FROM SURVEYS & RECORDS

BY
A.C. JONES & W.M. GIBBS
223 HIGH ST. CIVIL ENGINEERS
MOUNT HOLLY, N.J.

SCALE 1"=100'

- FEB. 1, 1947
- REVISED SEPT. 29, 1950
- REVISED AUG. 25, 1952
- REVISED OCT. 19, 1953
- REVISED JUNE 10, 1955
- REVISED FEB. 20, 1957
- REVISED JAN. 1959
- REVISED DEC. 5, 1961
- REVISED FEB. 10, 1964
- REVISED DEC. 22, 1964
- REVISED MAY 25, 1966

Revised Nov. 17, 1965
Revised Jan. 27, 1966
Revised July 29, 1969
Revised Jan. 21, 1970

REVISIONS			
REVISED BY	DATE	REVISION MADE TO	BY
RICHARD A. ALAIMI	7-22-71	BLK 2, PART 1 OF LOTS 3 & CHANGED TO 3A	R.A.
RICHARD A. ALAIMI	8-2-71	BLK 1 - LOT 3A CHANGED TO 3A	R.A.
RICHARD A. ALAIMI	8-3-71	BLK 10 - LOTS 1, 2 & 3 CHANGED TO LOTS 1, 2 & 3	R.A.
RICHARD A. ALAIMI	8-10-71	ADDED LOT 4, 14 & 15 TO BLOCK 10	R.A.
RICHARD A. ALAIMI	5-1-72	BLK 10 CHANGED FROM 10 TO 10A	R.A.
R.A. ALAIMI ASSOC.	1/24/80	REVISED LOTS 3 & 4 (NEW PLAN)	R.A.
L.A.W. & S.	8-3-84	REV. TO N.J. TAX MAP STANDARDS	PE
L.A.W. & S.	1-8-85	REV. TO N.J. TAX MAP STANDARDS	PE
R.A. ALAIMI ASSOC.	3-13-87	BLK 10A, 14 & 15 CHANGED FROM 10A TO 10	R.A.
R.A. ALAIMI ASSOC.	3-13-87	BLK 10A, 14 & 15 CHANGED FROM 10A TO 10	R.A.
R.A. ALAIMI ASSOC.	1-13-88	BLK 8, LOT 2 CHANGED FROM 15 TO 12	R.A.

NEW JERSEY DEPARTMENT OF THE TREASURY
DIVISION OF TAXATION
LOCAL PROPERTY AND PUBLIC UTILITY BRANCH
APPROVED AS A TAX MAP PURSUANT TO THE
PROVISIONS OF CHAPTER 176, LAWS OF 1914, ETC.
BY THE DIRECTOR, DIVISION OF TAXATION

[Signature]
LIC. 615484 CIVIL ENGINEERING REG. NO. 638
DATE: FEB 13 1988 SERIAL NO. 638