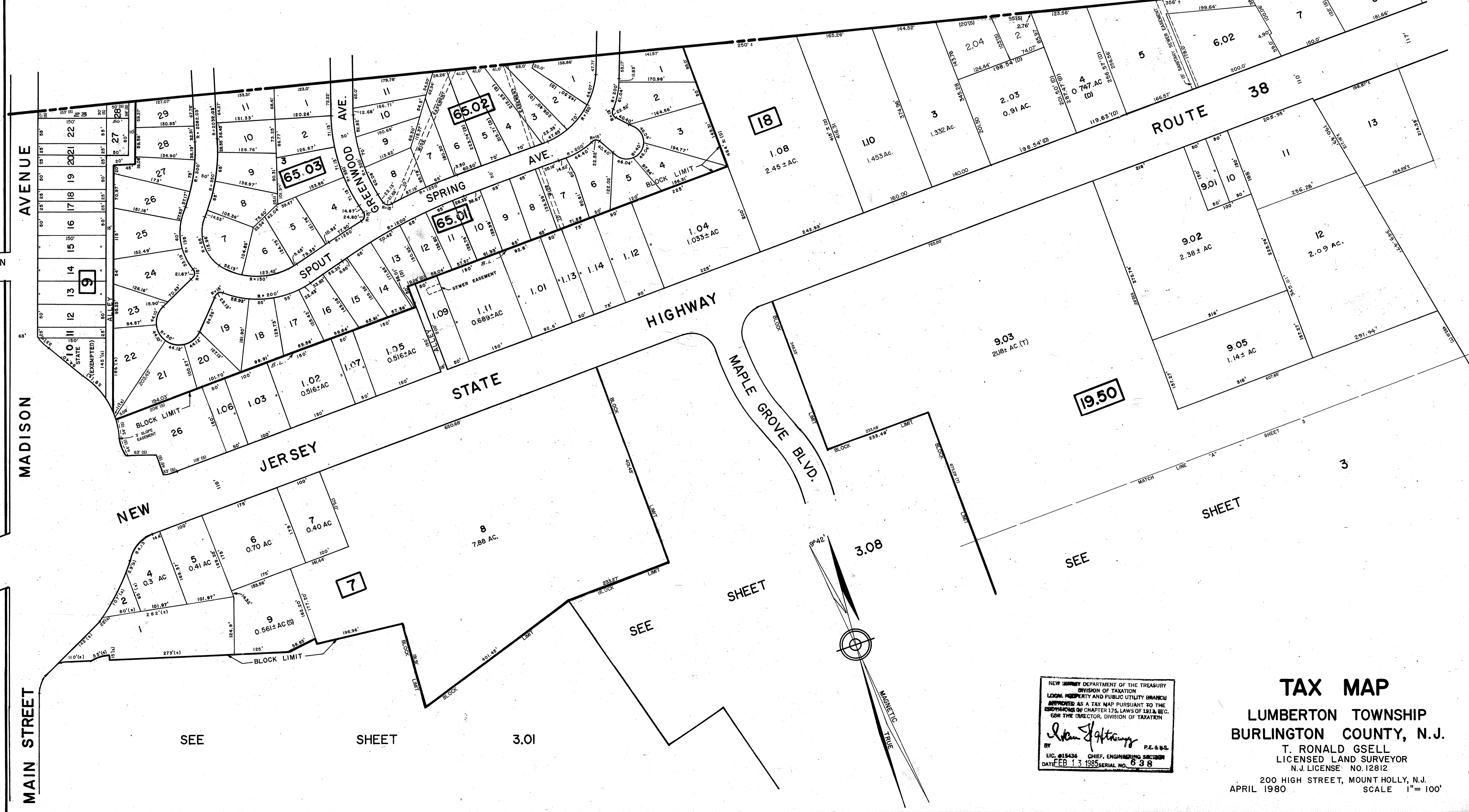


REVISED BY	DATE	REVISIONS	BY
RICHARD A. ALAIMO, ASSOC.	7-13-77	BLK. 18, EASEMENT- LOT 1H (1956-680)	D.H. 10
RICHARD A. ALAIMO, ASSOC.	12-19-78	BLK. 19, DELETED LOTS 9E, 9G, 9J TO MAKE 9C(19H)	J.M. 14
RICHARD A. ALAIMO, ASSOC.	4-30-80	ADDED BLK. 9, 7, 8 65 FROM SHEETS 1 & 3B	JUR
L.A.W. & S	10-3-84	REV. TO N.J. TAX MAP STANDARDS	LC
L.A.W. & S	11-2-85	REV. TO N.J. TAX MAP STANDARDS	LC
RICHARD A. ALAIMO ASSOC.	10-1-85	BLK. 18, SPLIT OFF LOT 3, 2 FROM LOT 9(B) (FROM REV.)	LC
RICHARD A. ALAIMO ASSOC.	11-8-86	BLK. 18, SPLIT OFF LOT 6 & 9 FROM LOT 6 & 9 (FROM REV.)	LC
RICHARD A. ALAIMO ASSOC.	11-8-86	BLK. 18, EASEMENT LOTS 201 & 202. (FROM REV.)	LC
RICHARD A. ALAIMO, Assoc.	3-18-87	BLK. 7, SPLIT LOTS 1, 2, 3 n. FROM LOT 201 (REVISED PLAN)	LC
RICHARD A. ALAIMO, Assoc.	3-18-87	BLK. 9, FORM LOT 1 FROM LOTS 1, 2 & 3 n. 9 & 2 & 3 n.	LC
		25.02 FROM D.O.T. PLANS	LC
		BLK. 19, LOT 13, WIDEN RTE 38, D.O.T. PLANS	LC
R.A. ALAIMO ASSOCIATES	4-21-89	DELETE LOTS 9.09 & 9.10, BLK. 19, NOW ON SHEET 3.08	DWS
R.A. ALAIMO ASSOCIATES	4-21-89	DELETE LOT 9/2, BLK. 19, NOW LOT 12, BLK. 7	DWS
R.A. ALAIMO ASSOCIATES	4-21-89	DELETE LOT 1, BLK. 9, NOW P.O. R.O.W.	DWS
R.A. ALAIMO ASSOCIATES	4-21-89	DELETE LOT 201, BLK. 7, NOW P.O. R.O.W.	DWS
R.A. ALAIMO ASSOCIATES	4-21-89	DELETE LOT 26, BLK. 9, NOW LOT 26, BLK. 18	DWS
RICHARD A. ALAIMO, ASSOC.	9-19-89	COMBINED LOTS 9.03, 9.06, 9.07, 9.08, 9.11, 8.03, BLOCK 19.50 NOW 9.03	JRF
R.A. ALAIMO ASSOCIATES	7-1-91	BLK. 7, MERGE LOTS 8/01 & 12 INTO LOT 8	4211/298
JCA ASSOCIATES, INC.	11-26-93	SUBDIVIDED BLOCK 19.50, LOTS 11, 12 & 1.04; NOW 11 & 12	RJA



NEW JERSEY DEPARTMENT OF THE TREASURY
 DIVISION OF TAXATION
 LOCAL PROPERTY AND PUBLIC UTILITY BRANCH
 APPROVED AS A TAX MAP PURSUANT TO THE
 PROVISIONS OF CHAPTER 175, LAWS OF 1913, SEC.
 FOR THE DIRECTOR, DIVISION OF TAXATION

T. Ronald Gsell
 BY T. RONALD GSELL, P.E. & S.
 EIC. #15436 CHIEF, ENGINEERING SECTION
 DATE FEB 13 1985 SERIAL NO. 638

TAX MAP
 LUMBERTON TOWNSHIP
 BURLINGTON COUNTY, N.J.
 T. RONALD GSELL
 LICENSED LAND SURVEYOR
 N.J. LICENSE NO. 12812
 200 HIGH STREET, MOUNT HOLLY, N.J.
 APRIL 1980 SCALE 1"=100'