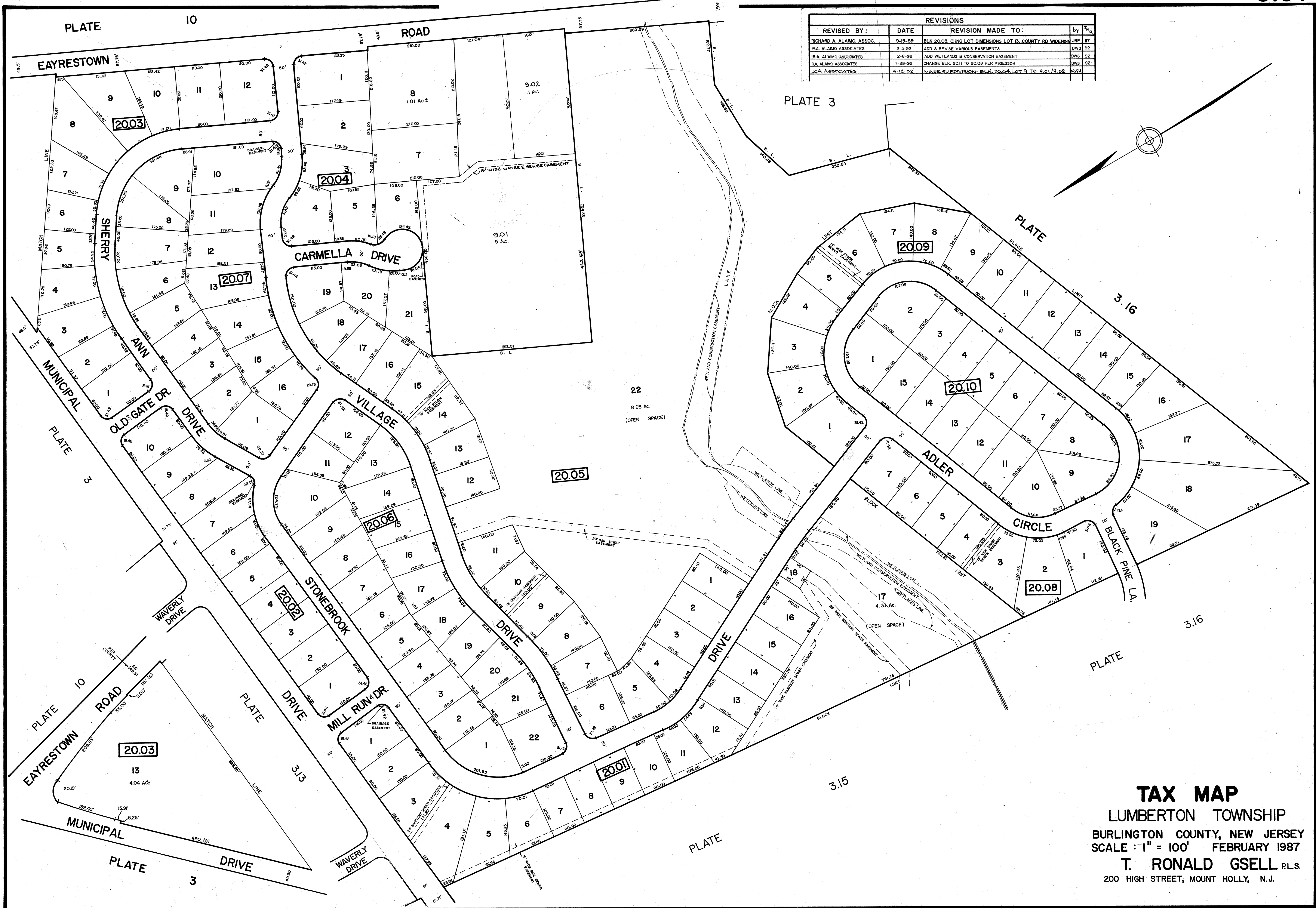


REVISIONS			
REVISED BY:	DATE	REVISION MADE TO:	By
RICHARD A. ALAIMO, ASSOC.	9-19-89	BLK 20.03, CHNG LOT DIMENSIONS LOT 13, COUNTY RD WIDENING	JRF 17
P.A. ALAIMO ASSOCIATES	2-5-92	ADD & REVISE VARIOUS EASEMENTS	DWS 32
P.A. ALAIMO ASSOCIATES	2-6-92	ADD WETLANDS & CONSERVATION EASEMENT	DWS 32
P.A. ALAIMO ASSOCIATES	7-28-92	CHANGE BLK. 20.11 TO 20.08 PER ASSESSOR	DWS 32
J.C.A. ASSOCIATES	4-12-92	MINOR SUBDIVISION, BLK. 20.04, LOT 9 TO 9.01/9.02	WJH



TAX MAP
 LUMBERTON TOWNSHIP
 BURLINGTON COUNTY, NEW JERSEY
 SCALE: 1" = 100' FEBRUARY 1987
 T. RONALD GSELL P.L.S.
 200 HIGH STREET, MOUNT HOLLY, N.J.